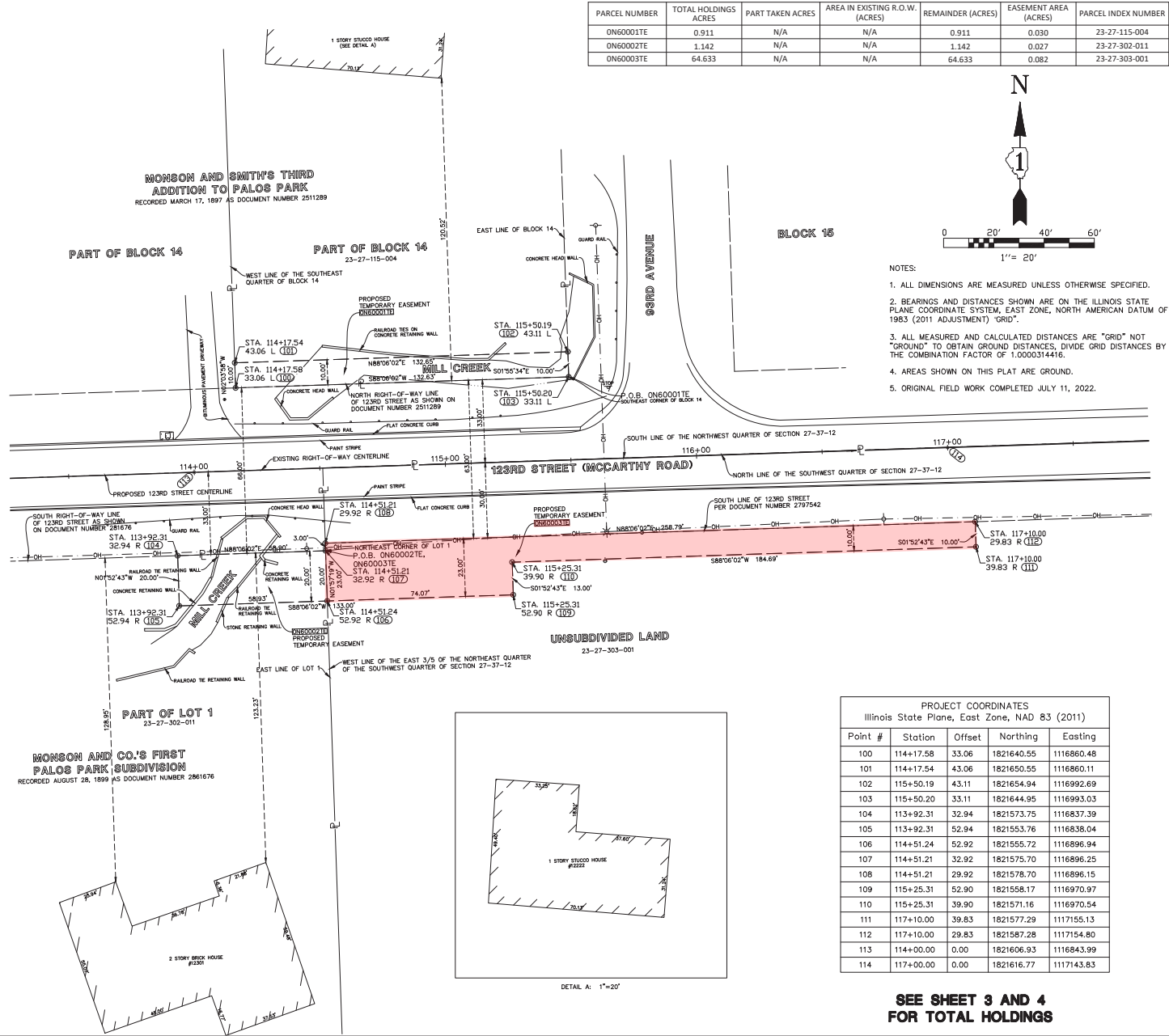


PART OF W 1/2 OF SECTION 27 TWP. 37 N., R. 12 E. OF THE THIRD P.M., IN COOK COUNTY, ILLINOIS



SEE SHEET 3 AND 4
FOR TOTAL HOLDINGS

IDOT21-WO2 SB

PART OF SE 1/4 OF SECTION 9 TWP. 35N., R. 10 E. OF THE THIRD P.M., IN WILL COUNTY, ILLINOIS

