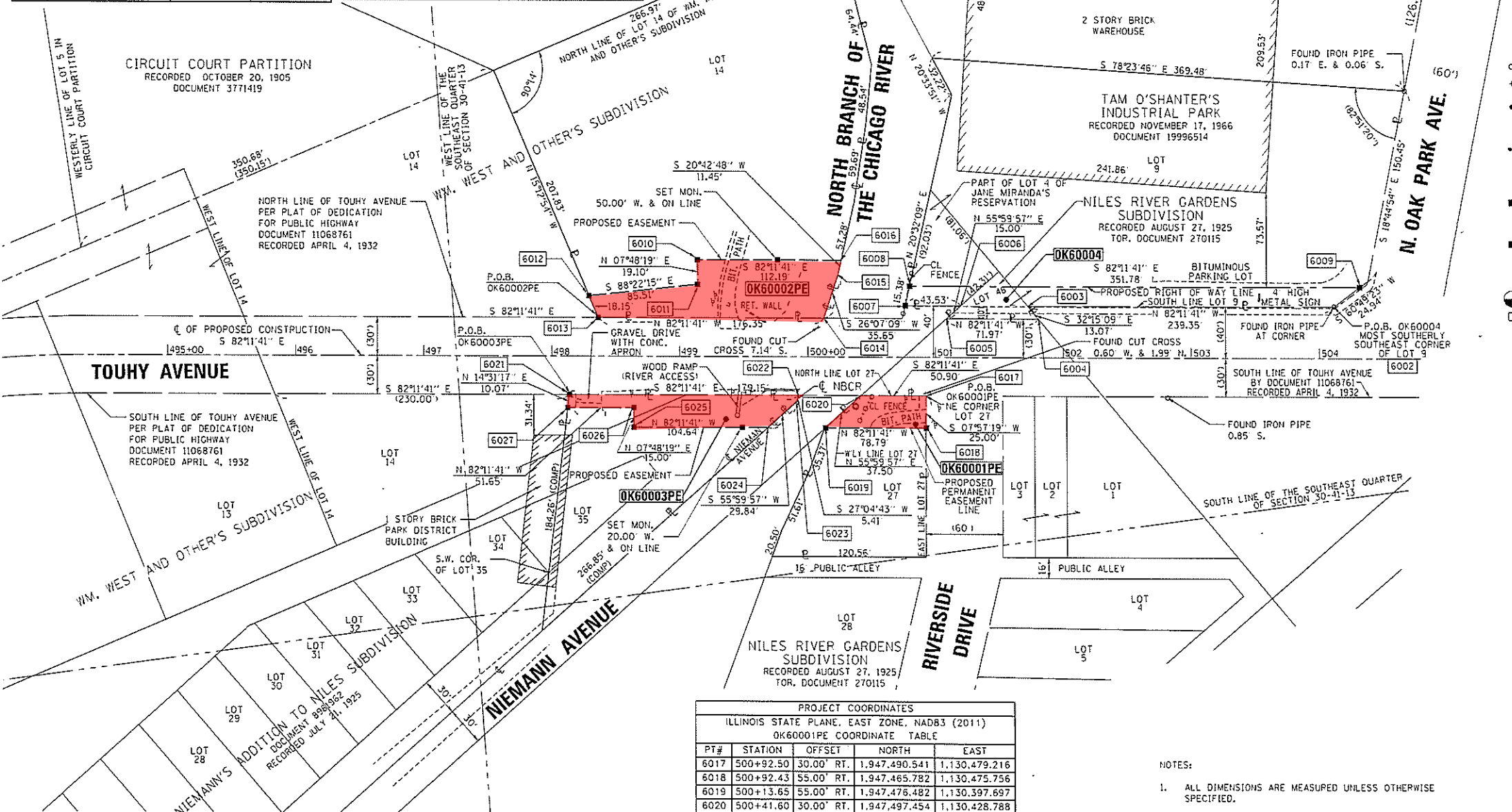
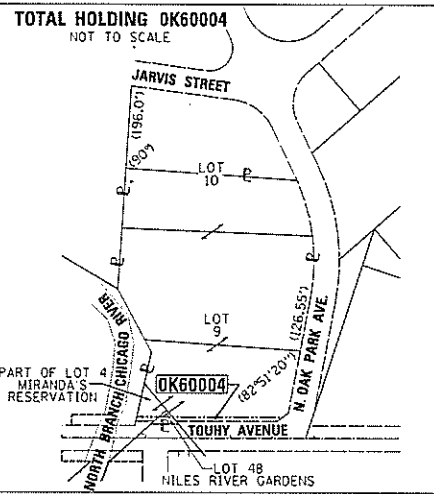


PART OF THE SOUTHEAST QUARTER OF SECTION 30, TOWNSHIP 41 NORTH, RANGE 13 EAST OF THE THIRD PRINCIPAL MERIDIAN, IN COOK COUNTY, ILLINOIS.

| PROJECT COORDINATES | | | | | |
|---|-----------|------------|---------------|---------------|--|
| ILLINOIS STATE PLANE, EAST ZONE, NAD83 (2011) | | | | | |
| OK60002PE COORDINATE TABLE | | | | | |
| PT# | STATION | OFFSET | NORTH | EAST | |
| 6014 | 500+12.53 | 30.00' LT. | 1,947,560.845 | 1,130,408.138 | |
| 6013 | 498+36.18 | 30.00' LT. | 1,947,564.796 | 1,130,233.420 | |
| 6012 | 498+29.08 | 46.70' LT. | 1,947,602.305 | 1,130,228.658 | |
| 6011 | 499+14.10 | 55.90' LT. | 1,947,599.873 | 1,130,314.136 | |
| 6010 | 499+14.10 | 75.00' LT. | 1,947,618.796 | 1,130,316.730 | |
| 6016 | 500+26.29 | 75.00' LT. | 1,947,603.560 | 1,130,427.880 | |
| 6015 | 500+23.73 | 63.84' LT. | 1,947,592.851 | 1,130,423.831 | |

| PROJECT COORDINATES | | | | | |
|---|-----------|------------|---------------|---------------|--|
| ILLINOIS STATE PLANE, EAST ZONE, NAD83 (2011) | | | | | |
| OK60004 COORDINATE TABLE | | | | | |
| PT# | STATION | OFFSET | NORTH | EAST | |
| 6002 | 504+11.60 | 40.00' LT. | 1,947,516.556 | 1,130,804.865 | |
| 6003 | 501+72.25 | 40.00' LT. | 1,947,549.062 | 1,130,567.733 | |
| 6004 | 501+80.66 | 30.00' LT. | 1,947,538.013 | 1,130,574.706 | |
| 6005 | 501+08.69 | 30.00' LT. | 1,947,547.786 | 1,130,503.407 | |
| 6006 | 501+19.87 | 40.00' LT. | 1,947,556.175 | 1,130,516.843 | |
| 6007 | 500+76.34 | 40.00' LT. | 1,947,562.087 | 1,130,472.717 | |
| 6008 | 500+79.73 | 55.00' LT. | 1,947,576.487 | 1,130,478.111 | |
| 6009 | 504+31.52 | 55.00' LT. | 1,947,526.712 | 1,130,826.636 | |

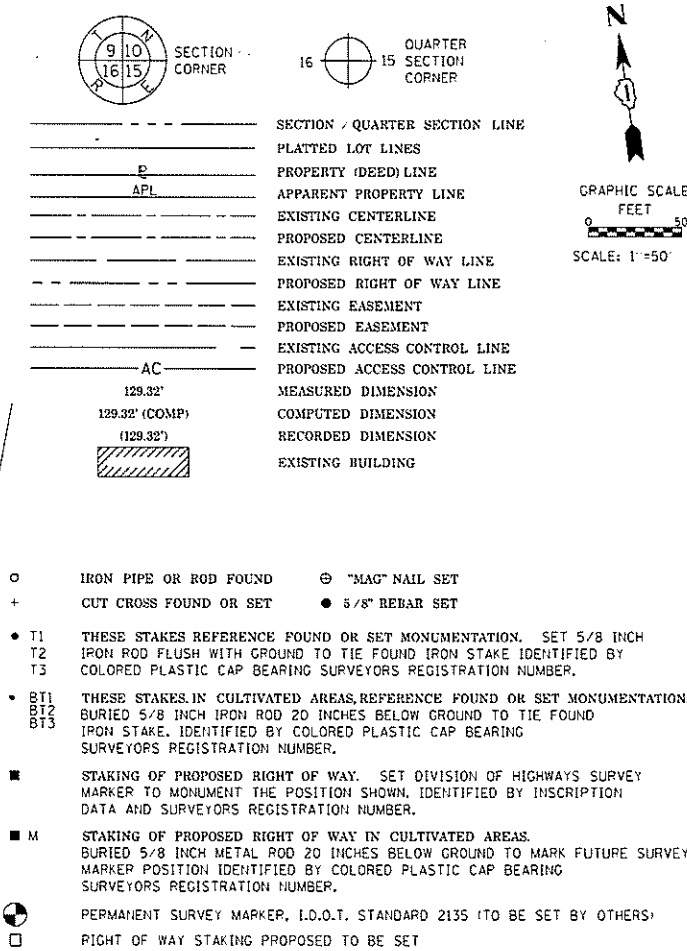


| PARCEL NUMBER | TOTAL HOLDINGS ACRES | PART TAKEN ACRES | AREA IN EXISTING R.O.W. ACRES | REMAINDER AREA ACRES | EASEMENT AREA ACRES | SQUARE FEET | PARCEL INDEX NUMBER |
|---------------|----------------------|------------------|-------------------------------|----------------------|---------------------|-------------|--|
| OK60001PE | 0.266 | N/A | N/A | 0.266 | 0.037 | N/A | 10-31-203-022 |
| OK60002PE | 1.391 | N/A | N/A | 1.391 | 0.149 | N/A | 10-30-317-037 |
| OK60003PE | 0.384 | N/A | N/A | 0.384 | 0.080 | N/A | 10-30-324-004 10-31-103-028 |
| OK60004 | 5.517 | 0.133 | N/A | 5.384 | N/A | N/A | 10-30-400-016 10-30-400-027 10-31-202-001 10-30-400-026 |

| PROJECT COORDINATES | | | | | |
|---|-----------|------------|---------------|---------------|--|
| ILLINOIS STATE PLANE, EAST ZONE, NAD83 (2011) | | | | | |
| OK60001PE COORDINATE TABLE | | | | | |
| PT# | STATION | OFFSET | NORTH | EAST | |
| 6017 | 500+92.50 | 30.00' RT. | 1,947,490.541 | 1,130,479.216 | |
| 6018 | 500+92.43 | 55.00' RT. | 1,947,465.782 | 1,130,475.756 | |
| 6019 | 500+13.65 | 55.00' RT. | 1,947,476.482 | 1,130,397.697 | |
| 6020 | 500+41.60 | 30.00' RT. | 1,947,497.454 | 1,130,428.788 | |

| PROJECT COORDINATES | | | | | |
|---|-----------|------------|---------------|---------------|--|
| ILLINOIS STATE PLANE, EAST ZONE, NAD83 (2011) | | | | | |
| OK60003PE COORDINATE TABLE | | | | | |
| PT# | STATION | OFFSET | NORTH | EAST | |
| 6021 | 498+13.53 | 30.00' RT. | 1,947,528.428 | 1,130,202.827 | |
| 6022 | 499+92.67 | 30.00' RT. | 1,947,504.098 | 1,130,380.314 | |
| 6023 | 499+90.89 | 35.11' RT. | 1,947,499.282 | 1,130,377.852 | |
| 6024 | 499+68.64 | 55.00' RT. | 1,947,482.594 | 1,130,353.111 | |
| 6025 | 498+64.00 | 55.00' RT. | 1,947,496.805 | 1,130,249.439 | |
| 6026 | 498+64.00 | 40.00' RT. | 1,947,511.666 | 1,130,251.476 | |
| 6027 | 498+12.35 | 40.00' RT. | 1,947,518.681 | 1,130,200.302 | |

LEGEND



STATE OF ILLINOIS)
COUNTY OF COOK)

THIS IS TO CERTIFY THAT WE, ENVIRONMENTAL DESIGN INTERNATIONAL, INC. AN ILLINOIS PROFESSIONAL DESIGN FIRM LAND SURVEYING CORPORATION, NUMBER 184-001224, HAVE SURVEYED THE PLAT OF HIGHWAYS SHOWN HEREON IN SECTION 30, TOWNSHIP 41 NORTH, RANGE 13 EAST OF THE THIRD PRINCIPAL MERIDIAN, COOK COUNTY, THAT THE SURVEY IS TRUE AND COMPLETE AS SHOWN TO THE BEST OF MY KNOWLEDGE AND BELIEF, THAT THE PLAT CORRECTLY REPRESENTS SAID SURVEY, THAT ALL MONUMENTS FOUND AND ESTABLISHED ARE OF PERMANENT QUALITY AND OCCUPY THE POSITIONS SHOWN THEREON AND THAT THE MONUMENTS ARE SUFFICIENT TO ENABLE THE SURVEY TO BE RETRACED, MADE FOR THE DEPARTMENT OF TRANSPORTATION, STATE OF ILLINOIS.

DATED AT CHICAGO, ILLINOIS THIS 8TH DAY OF MAY, A.D. 2018.

WILLIAM J. FLEMING, PLS
ILLINOIS PROFESSIONAL LAND SURVEYOR NO. 035.003226
LICENSE EXPIRATION DATE: 11/30/2018

THIS PROFESSIONAL SERVICE CONFORMS TO THE CURRENT ILLINOIS MINIMUM STANDARDS FOR A BOUNDARY SURVEY.

EDI JOB NO. 1173.923.29

EDI Environmental Design International Inc.
Civil Survey, Environmental and Construction Inspection Services
33 W. MONROE STREET, SUITE 1825, CHICAGO, IL 60603
Ph. (312) 345-1400 Fax (312) 345-0529
www.edesignl.com MBE/WBE/DBE

Excellence. Dedication. Innovation

PLAT OF HIGHWAYS
STATE OF ILLINOIS
DEPARTMENT OF TRANSPORTATION
TOUHY AVENUE

LIMITS: AT NORTH BRANCH CHICAGO RIVER COUNTY: COOK
SECTION: JOB NO.: P-90-005-14
STA. 499+00.00 TO STA. 501+80.68
SCALE: 1" = 50' SHEET 2 OF 2 SHEETS

BUREAU OF LAND ACQUISITION
201 WEST CENTER COURT
SCHAUMBURG, ILLINOIS 60196

- NOTES:
- ALL DIMENSIONS ARE MEASURED UNLESS OTHERWISE SPECIFIED.
 - BEARINGS AND DISTANCES SHOWN HEREON REFERENCE THE ILLINOIS STATE PLANE COORDINATE SYSTEM, EAST ZONE, NORTH AMERICAN DATUM OF 1983 (2011 ADJUSTMENT), 'GRID'.
 - ALL MEASURED AND CALCULATED DISTANCES ARE GRID 'NOT GROUND'. TO OBTAIN GROUND DISTANCES, DIVIDED GRID DISTANCES SHOWN BY THE COMBINATION FACTOR OF 0.9999994
 - AREAS SHOWN ON THIS PLAT ARE GROUND.

REVISION DATE: / / REVISION MADE BY: