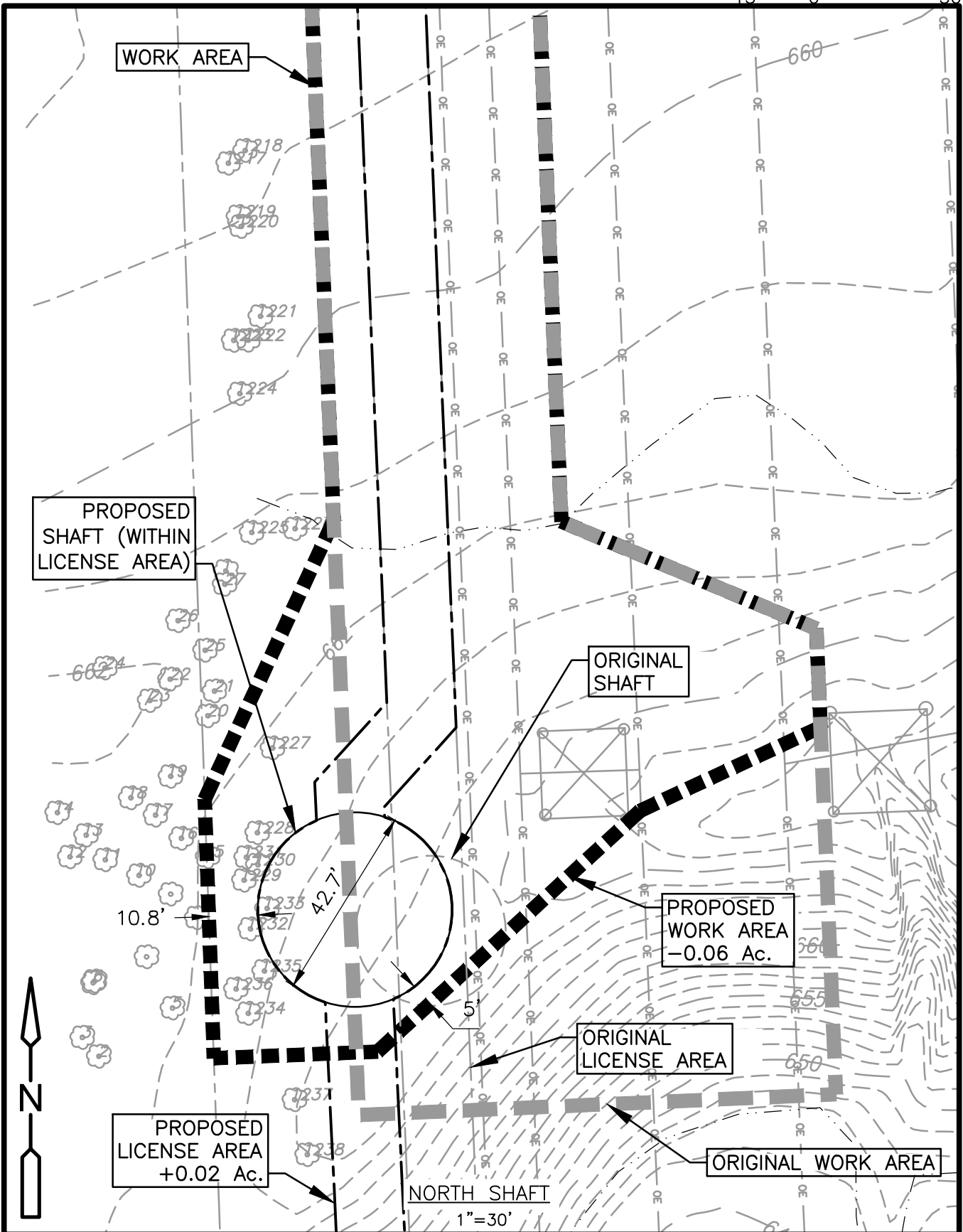


1" = 30'

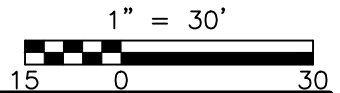


© 2015 CDM SMITH ALL RIGHTS RESERVED. REUSE OF DOCUMENTS: THESE DOCUMENTS AND DESIGNS PROVIDED BY PROFESSIONAL SERVICE, INCORPORATED HEREIN, ARE THE PROPERTY OF CDM SMITH AND ARE NOT TO BE USED, IN WHOLE OR PART, FOR ANY OTHER PROJECT WITHOUT THE WRITTEN AUTHORIZATION OF CDM SMITH.

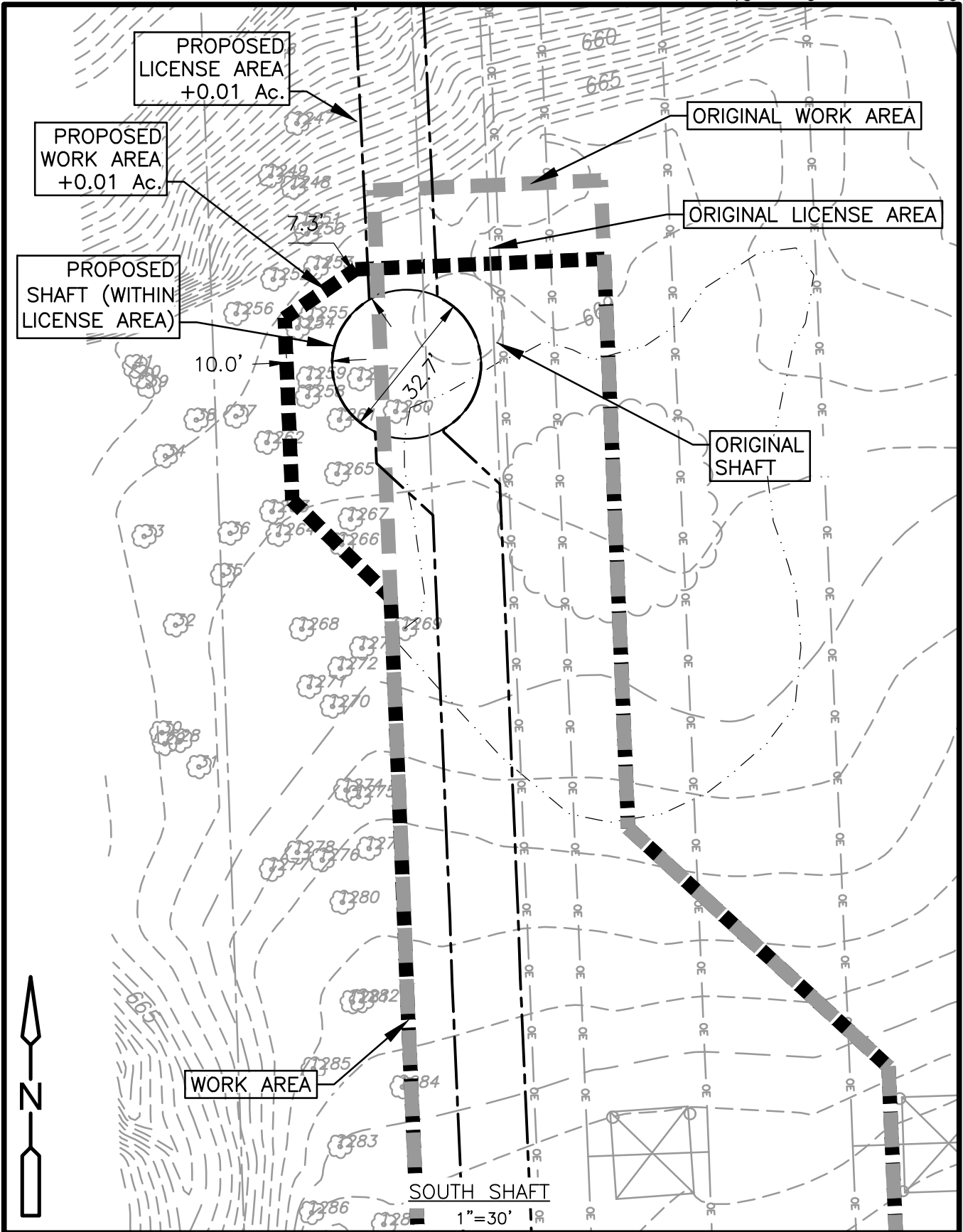


Oak Lawn Water Transmission Main
Tinley Creek Crossing

FEB 2021



© 2015 CDM SMITH ALL RIGHTS RESERVED. REUSE OF DOCUMENTS: THESE DOCUMENTS AND DESIGNS PROVIDED BY PROFESSIONAL SERVICE, INCORPORATED HEREIN, ARE THE PROPERTY OF CDM SMITH AND ARE NOT TO BE USED, IN WHOLE OR PART, FOR ANY OTHER PROJECT WITHOUT THE WRITTEN AUTHORIZATION OF CDM SMITH.



Oak Lawn Water Transmission Main
Tinley Creek Crossing

FEB 2021



License Fee Calculation

License No. 1730 Amendment

Length	Width	Square Ft	Acres
North Shaft Work Area	=	807	= 0.0185
South Shaft Work Area	=	369	= 0.0085
		1,176	0.0270
Cost/Acre		Acres	License Fee
\$88,000.00	X	0.0500 (min. required)	= \$4,400.00
		YELAR	= \$6,600.00
		Application Fee	= \$500.00
		Level One Review Fee	= \$3,000.00
		Level Two Review Fees	= \$0.00
		Total Fee	= \$14,500.00

Appendix A Cost per Acre, Minimum License Fee, and YELAR Program Fee

Year	Cost per Acre	Minimum Fee	YELAR Program Fee
2017	\$82,000.00	\$4,100.00	\$6,150.00
2018	\$84,000.00	\$4,200.00	\$6,300.00
2019	\$86,000.00	\$4,300.00	\$6,450.00
2020	\$88,000.00	\$4,400.00	\$6,600.00
2021	\$90,000.00	\$4,500.00	\$6,750.00
2022	\$92,000.00	\$4,600.00	\$6,900.00
2023	\$94,000.00	\$4,700.00	\$7,050.00

Village of Oak Lawn Regional Water System Improvements (License No. 1730)
Tree Survey for Removals Due to Transmission Main Realignment at Tinley Creek

Tree Number	DBH Size ¹	Type	Health ²	Structure ²	Origin ³	NLEB Tree (Y/N)? ⁴	If NLEB Tree, Type of Habitat ⁵	Estimate Diameter of Critical Root Zone (Feet)	Scientific Name
1227	8.0	Elm sp.	G	F	V	N	-	12.0	<i>Ulmus americana</i>
1227	7.0	Elm sp.	G	F	V	N	-	10.5	<i>Ulmus americana</i>
1228	6.0	Elm sp.	G	G	V	N	-	9.0	<i>Ulmus americana</i>
1228	6.0	Elm sp.	G	G	V	N	-	9.0	<i>Ulmus americana</i>
1229	9.0	Elm sp.	G	G	V	N	-	13.5	<i>Ulmus americana</i>
1230	7.0	Elm sp.	G	F	V	N	-	10.5	<i>Ulmus americana</i>
1231	4.5	Common buckthorn	G	F	V	N	-	6.8	<i>Rhamnus cathartica</i>
1231	2.0	Common buckthorn	G	F	V	N	-	3.0	<i>Rhamnus cathartica</i>
1232	8.0	Basswood	F	F	V	N	-	12.0	<i>Tilia americana</i>
1232	8.0	Basswood	F	F	V	N	-	12.0	<i>Tilia americana</i>
1233	5.0	Sugar maple	G	G	V	N	-	7.5	<i>Acer saccharum</i>
1234	6.5	Basswood	G	F	V	N	-	9.8	<i>Tilia americana</i>
1235	4.0	Basswood	G	F	V	N	-	6.0	<i>Tilia americana</i>
1236	14.0	Dead	D	D	V	Y	H, P	21.0	-
1254	5.5	Ironwood	G	G	V	N	-	8.3	<i>Ostrya virginiana</i>
1255	5.0	Sugar maple	G	G	V	N	-	7.5	<i>Acer saccharum</i>
1257	8.5	Basswood	F	F	V	N	-	12.8	<i>Tilia americana</i>
1258	9.5	Shagbark hickory	G	G	V	Y	P	14.3	<i>Carya ovata</i>
1259	5.5	Sugar maple	G	G	V	N	-	8.3	<i>Acer saccharum</i>
1261	5.5	Sugar maple	F	F	V	N	-	8.3	<i>Acer saccharum</i>
1265	9.0	Basswood	P	P	V	Y	H	13.5	<i>Tilia americana</i>
1266	9.5	Red oak	G	G	V	N	-	14.3	<i>Quercus rubra</i>
1267	5.0	Red oak	G	F	V	N	-	7.5	<i>Quercus rubra</i>

1 - MS = Multistemmed, multistem sizes are in comments column.

2 - Health and Structure: G= Good, F= Fair, P = Poor, D = Dead

3 - Origin: V = Volunteer, L = Landscaped

4 - NLEB = Northern Long-Eared Bat Tree: Y = Provides habitat for the NLEB, N = Does not provide habitat for the NLEB

5 - P = Peeling bark, C = Cracks, S = Snag, H = Hole



Forest Preserve District of Cook County

Table A: Tree Valuation Matrix for Live Trees

Instructions: Complete the highlighted column for every live tree surveyed/inventoried. Indicate species and location from the dropdown menus, where indicated. Click the "Add New Row" button at the bottom of the table for additional lines. Delete any unused entry rows showing #REF! or #N/A errors.

OBJECTID *	STARTING DIAMETER (DBH)	MULTI-STEM? (yes or no)	SPECIES (select from dropdown)	YEAR SCHEDULED TO BE REMOVED	ANTICIPATED GROWTH	YEARS UNTIL REMOVAL	TOTAL DIAMETER	RADIUS	RADIUS SQ.	PI	BASIC VALUE PER INCH CROSS SECTION	MAX TREE VALUE	LOCATION (select from dropdown)	LOCATION/C ONDITION MULTIPLIER	ADJUSTED BASE TREE VALUE	Native Index value of 5 or greater	Total \$ for trees w/ multiplier of 1	Native Index value of 2 to 4	Total \$ for trees w/ multiplier of .75	Native Index value of 1 or 0	Total \$ for trees w/ multiplier of .50	Non-native trees	Total \$ for trees w/ multiplier of .20
	5		Acer saccharinum	2021	0	0	5	2.50	6.25	3.14	116.40	2284.35	General	0.585	1336.34	0	\$ -	0	\$ -	0.5	\$ 668.17	0	\$ -
	5		Acer saccharinum	2021	0.2	0	5	2.50	6.25	3.14	116.40	2284.35	General	0.585	1336.34	0	\$ -	0	\$ -	0.5	\$ 668.17	0	\$ -
	6		Acer saccharinum	2021	0.2	0	6	3.00	9.00	3.14	116.40	3289.46	General	0.585	1924.33	0	\$ -	0	\$ -	0.5	\$ 962.17	0	\$ -
	6		Acer saccharinum	2021	0.2	0	6	3.00	9.00	3.14	116.40	3289.46	General	0.585	1924.33	0	\$ -	0	\$ -	0.5	\$ 962.17	0	\$ -
	10		Carya ovata	2021	0.112	0	10	5.00	25.00	3.14	116.40	9137.40	General	0.585	5345.38	1	\$ 5,345.38	0	\$ -	0	\$ -	0	\$ -
	10		Quercus rubra	2021	0.202	0	10	5.00	25.00	3.14	116.40	9137.40	General	0.585	5345.38	1	\$ 5,345.38	0	\$ -	0	\$ -	0	\$ -
	5		Quercus rubra	2021	0.202	0	5	2.50	6.25	3.14	116.40	2284.35	General	0.585	1336.34	1	\$ 1,336.34	0	\$ -	0	\$ -	0	\$ -
	6		Acer saccharinum	2021	0.2	0	6	3.00	9.00	3.14	116.40	3289.46	General	0.585	1924.33	0	\$ -	0	\$ -	0.5	\$ 962.17	0	\$ -
	4		Tilia americana	2021	0.192	0	4	2.00	4.00	3.14	116.40	1461.98	General	0.585	855.26	1	\$ 855.26	0	\$ -	0	\$ -	0	\$ -
	7		Tilia americana	2021	0.192	0	7	3.50	12.25	3.14	116.40	4477.33	General	0.585	2619.24	1	\$ 2,619.24	0	\$ -	0	\$ -	0	\$ -
	8		Tilia americana	2021	0.192	0	8	4.00	16.00	3.14	116.40	5847.94	General	0.585	3421.04	1	\$ 3,421.04	0	\$ -	0	\$ -	0	\$ -
	8		Tilia americana	2021	0.192	0	8	4.00	16.00	3.14	116.40	5847.94	General	0.585	3421.04	1	\$ 3,421.04	0	\$ -	0	\$ -	0	\$ -
	9		Tilia americana	2021	0.192	0	9	4.50	20.25	3.14	116.40	7401.29	General	0.585	4329.75	1	\$ 4,329.75	0	\$ -	0	\$ -	0	\$ -
	9		Tilia americana	2021	0.192	0	9	4.50	20.25	3.14	116.40	7401.29	General	0.585	4329.75	1	\$ 4,329.75	0	\$ -	0	\$ -	0	\$ -
	6		Ulmus americana	2021	0.143	0	6	3.00	9.00	3.14	116.40	3289.46	General	0.585	1924.33	0	\$ -	0.75	\$ 1,443.25	0	\$ -	0	\$ -
	6		Ulmus americana	2021	0.143	0	6	3.00	9.00	3.14	116.40	3289.46	General	0.585	1924.33	0	\$ -	0.75	\$ 1,443.25	0	\$ -	0	\$ -
	7		Ulmus americana	2021	0.143	0	7	3.50	12.25	3.14	116.40	4477.33	General	0.585	2619.24	0	\$ -	0.75	\$ 1,964.43	0	\$ -	0	\$ -
	7		Ulmus americana	2021	0.143	0	7	3.50	12.25	3.14	116.40	4477.33	General	0.585	2619.24	0	\$ -	0.75	\$ 1,964.43	0	\$ -	0	\$ -
	8		Ulmus americana	2021	0.143	0	8	4.00	16.00	3.14	116.40	5847.94	General	0.585	3421.04	0	\$ -	0.75	\$ 2,565.78	0	\$ -	0	\$ -
	9		Ulmus americana	2021	0.143	0	9	4.50	20.25	3.14	116.40	7401.29	General	0.585	4329.75	0	\$ -	0.75	\$ 3,247.31	0	\$ -	0	\$ -

Add New Row

Box 1a	Box 1b	Box 2a	Box 2b	Box 3a	Box 3b	Box 4a	Box 4b
Total # of trees w/ multiplier of 1	Total \$ for trees w/ multiplier of 1	Total # of trees w/ multiplier of .75	Total \$ for trees w/ multiplier of .75	Total # of trees w/ multiplier of .5	Total \$ for trees w/ multiplier of .50	Total # of trees w/ multiplier of .2	Total \$ for trees w/ multiplier of .20
9	\$ 31,003.18	6	\$ 12,628.45	5	\$ 4,222.85	0	\$ -

TOTAL LIVE TREES:
20

TOTAL MITIGATION (LIVE TREES):
\$47,854.48

Box 5