

F.A. RTE.	SECTION	COUNTY	TOTAL SHEETS	SHEET NO.
		ILLINOIS		
CONTRACT NO.				

TRAFFIC DATA

ADT:
OAK FOREST AVENUE, 147th STREET 11,400 (2022)

SPEED POSTED DESIGN SPEED

OAK FOREST AVENUE, 147th STREET 40 MPH 40 MPH

CITY OF OAK FOREST

PLANS FOR PROPOSED SAFETY IMPROVEMENTS

OAK PARK AVENUE AT 147th STREET
CITY OF OAK FOREST
COOK COUNTY



LOCATION OF SECTION INDICATED THIS: - ■ -



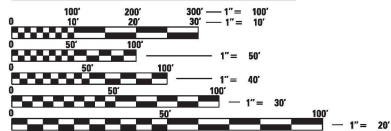
PROJECT LOCATION MAP
COOK COUNTY, ILLINOIS
N.T.S.

PROJECT LENGTH
NET AND GROSS LENGTH = XXX FT = XXX MILES

J.U.L.I.E.
JOINT
UTILITY
LOCATION
INFORMATION FOR
EXCAVATION
CALL 811



Know what's below.
Call before you dig.



FULL SIZE PLANS HAVE BEEN PREPARED USING STANDARD ENGINEERING SCALES. REDUCED SIZED PLANS WILL NOT CONFORM TO STANDARD SCALES. IN MAKING MEASUREMENTS ON REDUCED PLANS, THE ABOVE SCALES MAY BE USED.



420 NORTH FRONT STREET, SUITE 100 | McHENRY, ILLINOIS 60050
Phone: 815.385.1778 | Toll Free: 800.728.7805 | Fax: 815.385.1781 | HRGreen.com
ILLINOIS PROFESSIONAL DESIGN FIRM #184-001322

PROJECT ENGINEER: MICHELLE L ZUZZIO, P.E.
PROJECT MANAGER: A. CHAUDHRY, P.E.

CITY OF OAK FOREST

SUBMITTED _____ DATE _____

CITY OF OAK FOREST


PROFESSIONAL ENGINEER'S SIGN & SEAL

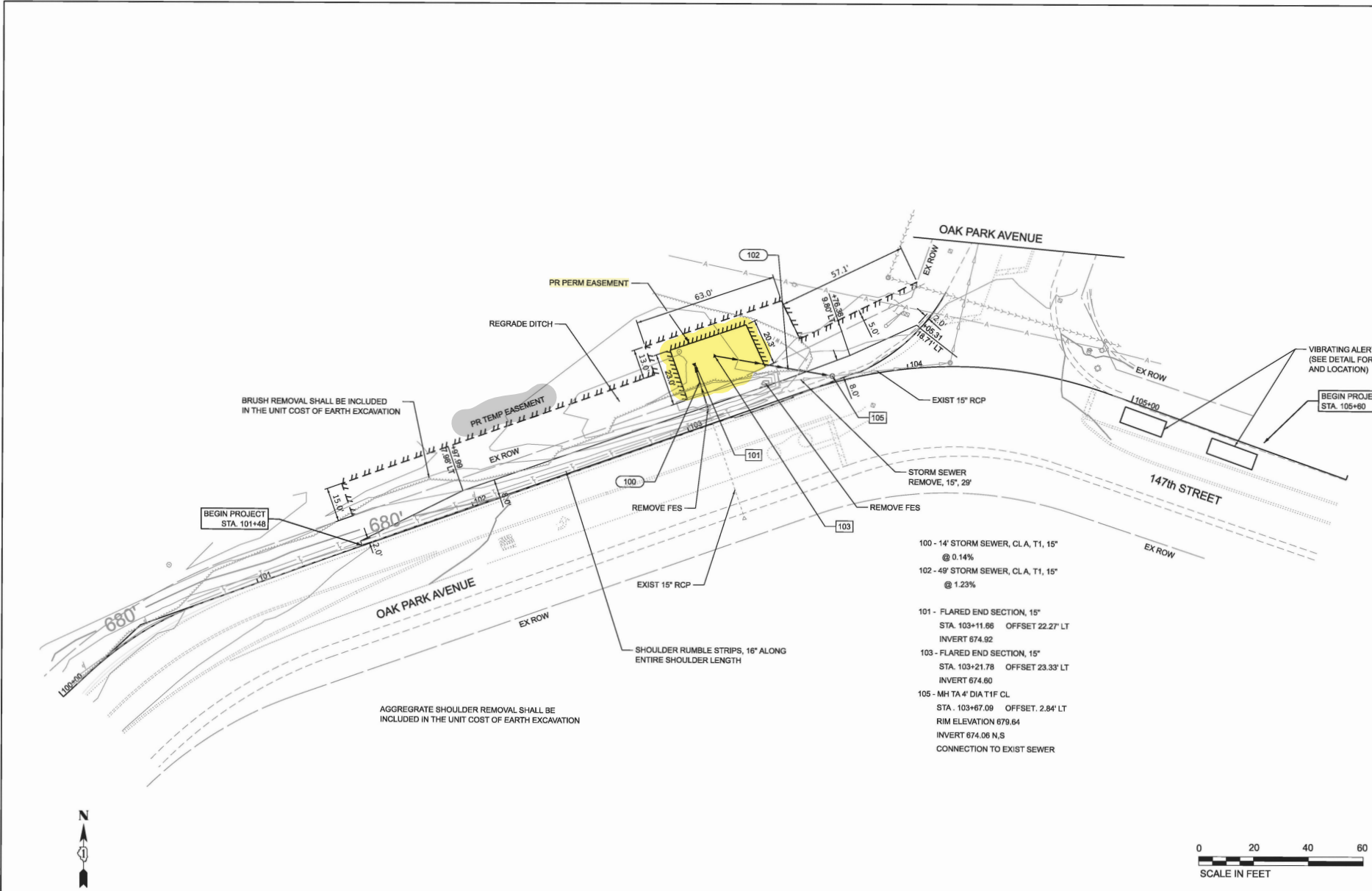
MICHELLE L. ZUZZIO, P.E.

DATE _____

11/30/2023

EXPIRES _____





- 100 - 14' STORM SEWER, CL.A, T1, 15"
@ 0.14%
- 102 - 49' STORM SEWER, CL.A, T1, 15"
@ 1.23%
- 101 - FLARED END SECTION, 15"
STA. 103+11.66 OFFSET 22.27' LT
INVERT 674.92
- 103 - FLARED END SECTION, 15"
STA. 103+21.78 OFFSET 23.33' LT
INVERT 674.60
- 105 - MH TA 4' DIA T1 F CL
STA. 103+67.09 OFFSET 2.84' LT
RIM ELEVATION 679.64
INVERT 674.06 N.S
CONNECTION TO EXIST SEWER



MODEL: PBL-COAK_Park - Plan 1 (Sheet)
 FILE NAME: 20230405_001_Plan.dwg



USER NAME = mzuzio	DESIGNED -	REVISED -
PLOT SCALE = 0.166666667 / in.	DRAWN -	REVISED -
PLOT DATE = 10/12/2023	CHECKED -	REVISED -
	DATE -	REVISED -

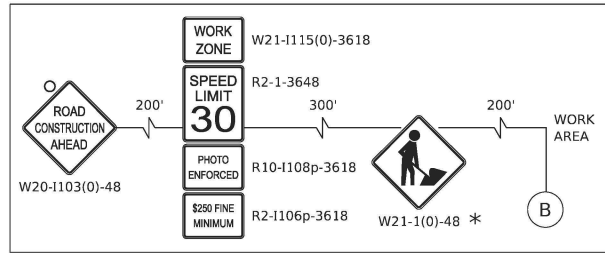
STATE OF ILLINOIS
DEPARTMENT OF TRANSPORTATION

PLAN & DRAINAGE
OAK PARK AVE AT 147TH ST

F.A. RTE. 2774	SECTION	COUNTY COOK	TOTAL SHEETS 11	SHEET NO. 4
CONTRACT NO.				

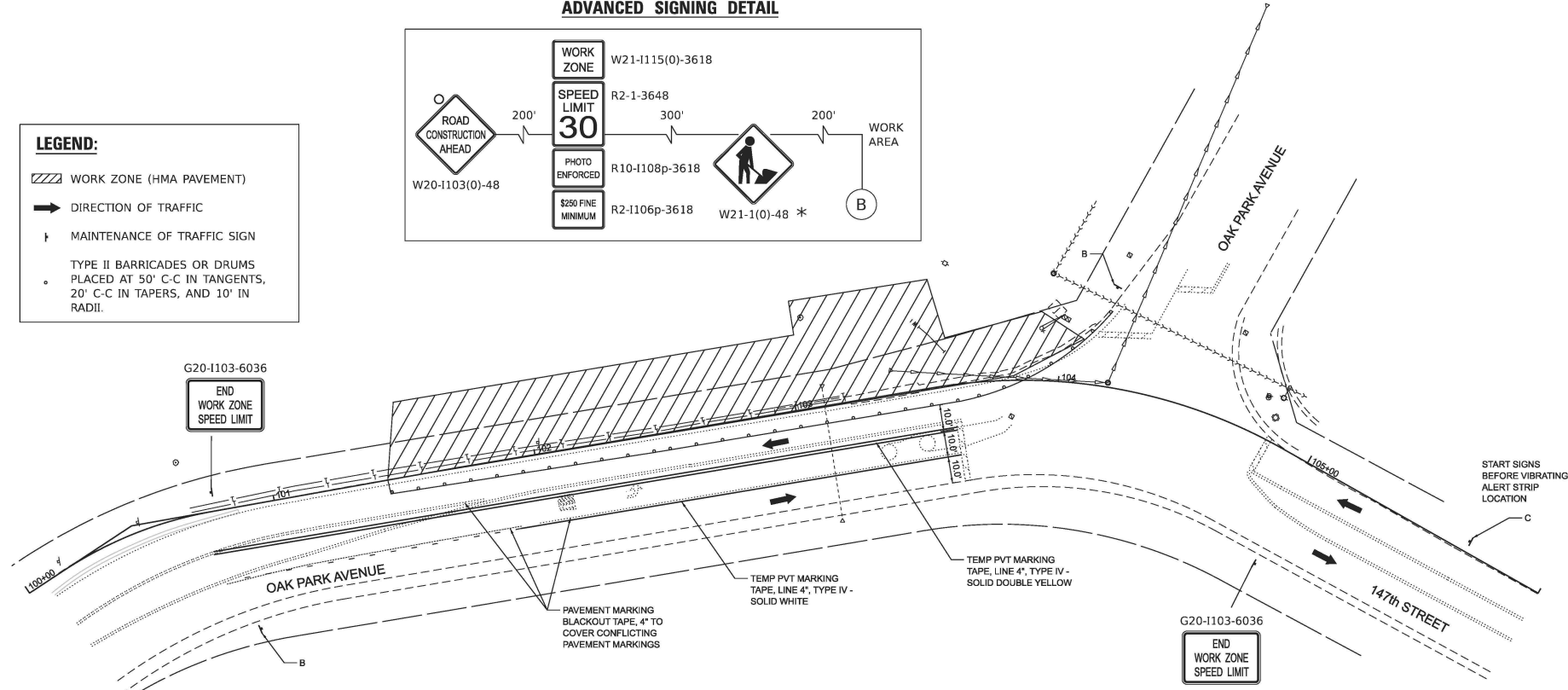
SCALE: SHEET 1 OF 1 SHEETS STA. TO STA. ILLINOIS FED. AID PROJECT Long Section Number

ADVANCED SIGNING DETAIL



LEGEND:

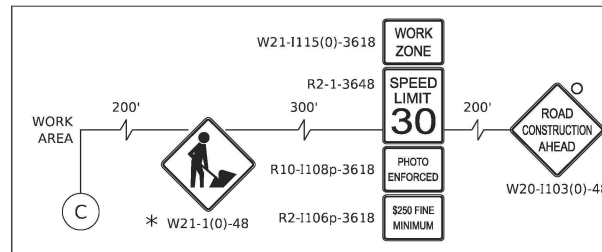
- WORK ZONE (HMA PAVEMENT)
- DIRECTION OF TRAFFIC
- MAINTENANCE OF TRAFFIC SIGN
- TYPE II BARRICADES OR DRUMS PLACED AT 50' C-C IN TANGENTS, 20' C-C IN TAPERS, AND 10' IN RADII.



NOTES

* SIGN SHALL BE TAKEN DOWN WHEN WORKERS ARE NOT PRESENT.

ADVANCED SIGNING DETAIL



**STATE OF ILLINOIS
DEPARTMENT OF TRANSPORTATION**

**MAINTENANCE OF TRAFFIC PLANS
OAK PARK AVE AT 147TH ST**

F.A. SITE	SECTION	COUNTY	TOTAL SHEETS	SHEET NO.
2774		COOK	12	5
CONTRACT NO.				
ILLINOIS FED. AID PROJECT				

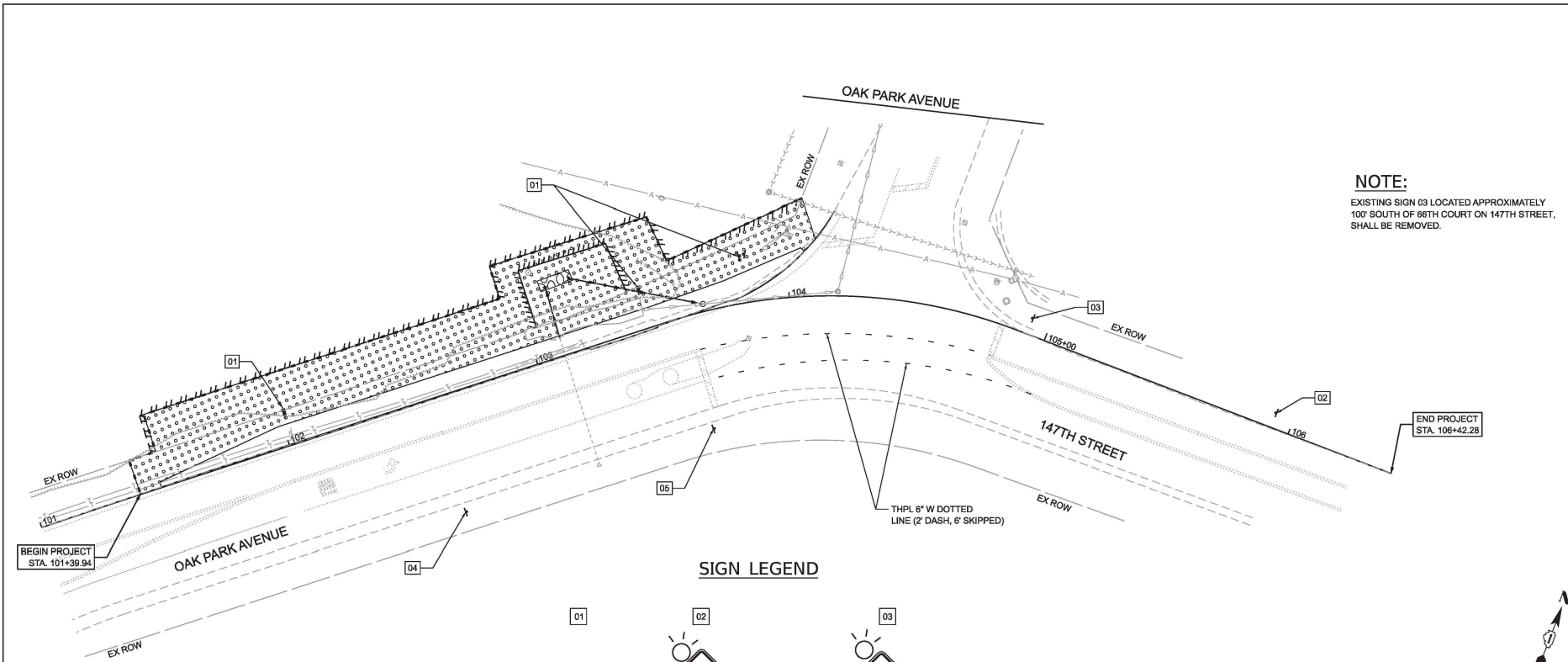
SCALE: SHEET 1 OF 1 SHEETS STA. TO STA.

Long Section Number

MODEL: MOT Plan - Plan 1 (Sheet)
 FILE NAME: 230319_04A.MXD:SP

HRGreen
 HRGreen.com
 Illinois Professional Design Firm
 #184-01322

USER NAME	DESIGNED	REVISIONS
mzuzlo	-	-
DRAWN	REVISIONS	-
-	-	-
CHECKED	REVISIONS	-
-	-	-
DATE	REVISIONS	-
10/12/2023	-	-



NOTE:
 EXISTING SIGN 03 LOCATED APPROXIMATELY
 100' SOUTH OF 86TH COURT ON 147TH STREET,
 SHALL BE REMOVED.

BEGIN PROJECT
 STA. 101+39.84

END PROJECT
 STA. 106+42.28

SIGN LEGEND

LEGEND

- PERIMETER EROSION BARRIER (FT)
- [Pattern] TEMPORARY EROSION CONTROL BLANKET
 NITROGEN FERTILIZER NUTRIENT
 POTASSIUM FERTILIZER NUTRIENT
 TOPSOIL FURNISH AND PLACE, 4"
 EROSION CONTROL BLANKET
- [Pattern] STONE RIPRAP, CLASS A4

01 W1-a (18"x24")

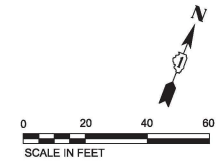
02 W1-10 (36"x36")

03 W1-1aR (36"x36")

04 W1-10 (36"x36")

05 W1-1aR (36"x36")

20 MPH W13-1P (24x30)



**SIGN ENHANCEMENTS
 LED-OPTIONAL RADAR**

MODEL: P141-Oak Park 2 - Engr 10/24/13
 FILE NAME: 2/20/14/147th Erosion.dgn

HRGreen
 HRGreen.com
 Illinois Professional Design Firm
 #184-001322

USER NAME	= mruzilo	DESIGNED	-	REVISED	-
DRAWN	-	REVISOR	-	REVISOR	-
CHECKED	-	REVISOR	-	REVISOR	-
DATE	= 10/12/2013	DATE	-	DATE	-

**STATE OF ILLINOIS
 DEPARTMENT OF TRANSPORTATION**

**EROSION CONTROL & PAVEMENT MARKING PLANS
 OAK PARK AVE AT 147TH ST**

SCALE: SHEET 1 OF 1 SHEETS STA. TO STA.

F.A. SITE NO.	SECTION	COUNTY	TOTAL SHEETS	SHEET NO.
2774		COOK	12	6
ILLINOIS FED. AID PROJECT			CONTRACT NO.	
Long Section Number				