

PREPARED BY
HUNTERS & ASSOCIATES, INC.
 2201 W. 22nd Street, Suite 200
 Chicago, IL 60616

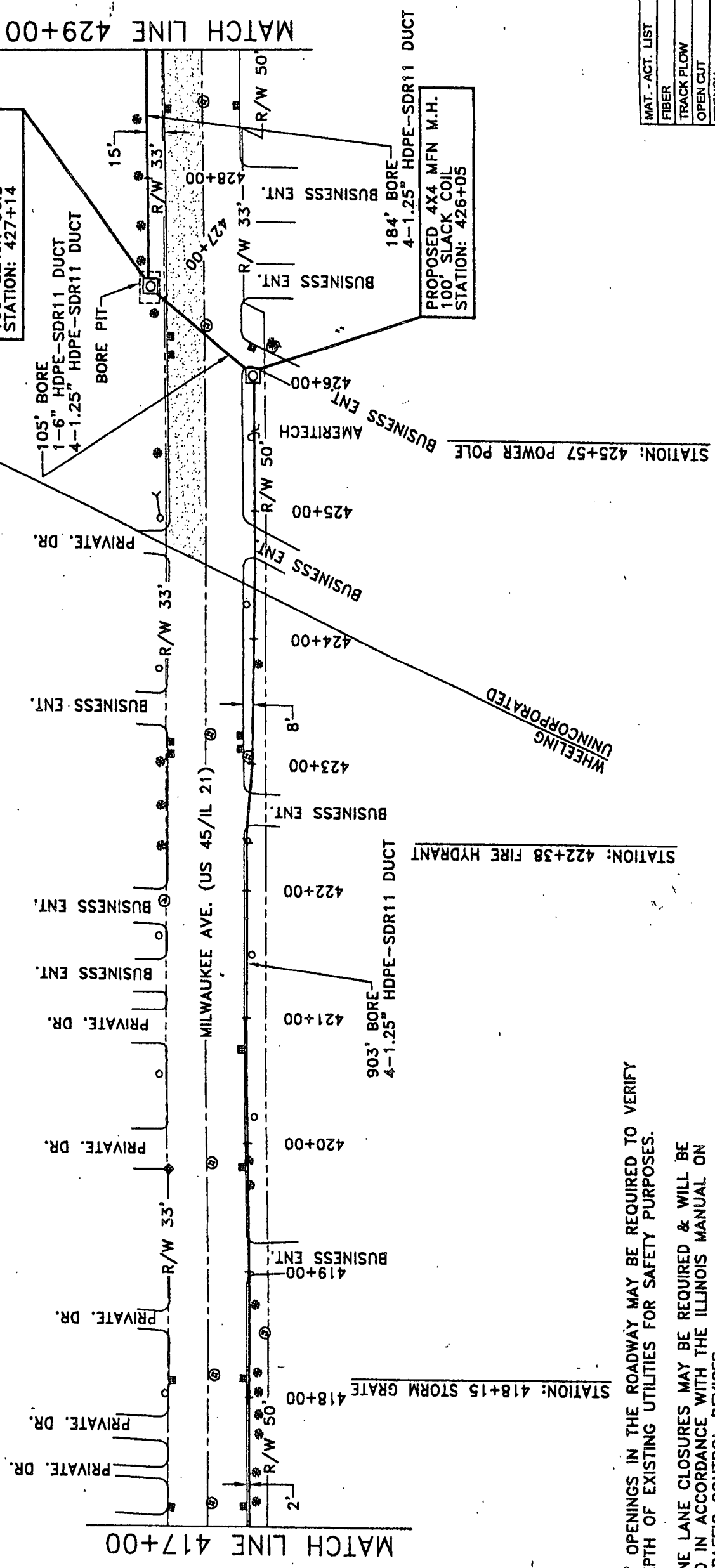
NOTE: BORE PITS AND RUNNING LINES WERE FIELD REVIEWED BY MR. DAN WEBER OF THE FOREST PRESERVE ON 9/28/00.

CAUTION: BEFORE CONSTRUCTION STARTS, THE BORE PITS AND RUNNING LINE STAKING WILL BE APPROVED BY AN OFFICER OF THE FOREST PRESERVE. ALL DEVIATION WILL BE APPROVED BY THE FOREST PRESERVE PRIOR TO CONSTRUCTION.

MFN - VERNON HILLS - PROSPECT HEIGHTS
 COOK COUNTY, IL
 CITY OF WHEELING & UNINCORPORATED
 SEC. 12
 T42N - R11E

= ROAD R/W OWNED IN-FEE BY THE COOK COUNTY FOREST PRESERVE DISTRICT.

DAM No. 1 WOODS FOREST PRESERVE



NOTES:

1. PROPERTY LINES ARE APPROXIMATE AND ARE SHOWN FOR INFORMATION ONLY.
2. LIMITS OF ROW TO BE DETERMINED PRIOR TO CONSTRUCTION.
3. LOCATIONS OF EXISTING UTILITIES ARE APPROX. AND MUST BE VERIFIED IN THE FIELD BY THE CONTRACTOR.
4. ALL PIPELINE CROSSINGS TO BE HAND EXPOSED PRIOR TO CONSTRUCTION.
5. ELEVATIONS ARE BASED ON ARBITRARY DATUM.

LOOP:
 SEGMENT:
 SITE ADDRESS:

TITLE:
HOUSEHOLD FINANCE

24" X 24" OPENINGS IN THE ROADWAY MAY BE REQUIRED TO VERIFY SIZE & DEPTH OF EXISTING UTILITIES FOR SAFETY PURPOSES.

SINGLE LANE CLOSURES MAY BE REQUIRED & WILL BE CONDUCTED IN ACCORDANCE WITH THE ILLINOIS MANUAL ON UNIFORM TRAFFIC CONTROL DEVICES.

THE LOCATION OF ALL R/W AND PROPERTY LINES ON THIS DRAWING WERE DETERMINED SOLELY BY USE OF READILY AVAILABLE PLAT MAPS. NO SURVEYS WERE CONDUCTED IN ASCERTAINING R/W LOCATIONS. CONSTRUCTION RESOURCES, INC. AND HUNTERS & ASSOCIATES, INC. CANNOT AND DO NOT WARRANT THE ACCURACY OF THE R/W AND PROPERTY LINES ON THIS DRAWING.

MAT. - ACT. LIST	QUANTITY
FIBER	1400'
TRACK PLOW	0'
OPEN CUT	0'
TRENCH	0'
DIRECTIONAL BORE	1192'
BRIDGE ATTACHMENT	0'
BALLAST DECK	0'
6" B.I.P.	0'
6" HDPE-SDR11	105'
1.25" HDPE-SDR11	4768'
MARKER TAPE	0'
MANHOLE	2
HANDHOLE	0

<input type="checkbox"/> FIBER	<input type="checkbox"/> SLACK HANDHOLE	<input type="checkbox"/> SIGN	<input type="checkbox"/> STORM DRAIN	<input type="checkbox"/> ELECTRIC
<input type="checkbox"/> CATCH BASIN	<input type="checkbox"/> 4 X 4 MANHOLE	<input type="checkbox"/> MAIL BOX	<input type="checkbox"/> SANITARY SEWER	<input type="checkbox"/> OVER HEAD COVER
<input type="checkbox"/> FIRE HYDRANT	<input type="checkbox"/> POLE	<input type="checkbox"/> TREE	<input type="checkbox"/> GAS	<input type="checkbox"/> CABLE TELEVISION
<input type="checkbox"/> POWER BOX	<input type="checkbox"/> STREET LIGHT	<input type="checkbox"/> PEDESTAL	<input type="checkbox"/> TELEPHONE	<input type="checkbox"/> WATER

METRO MEDIA
 FIBER NETWORK

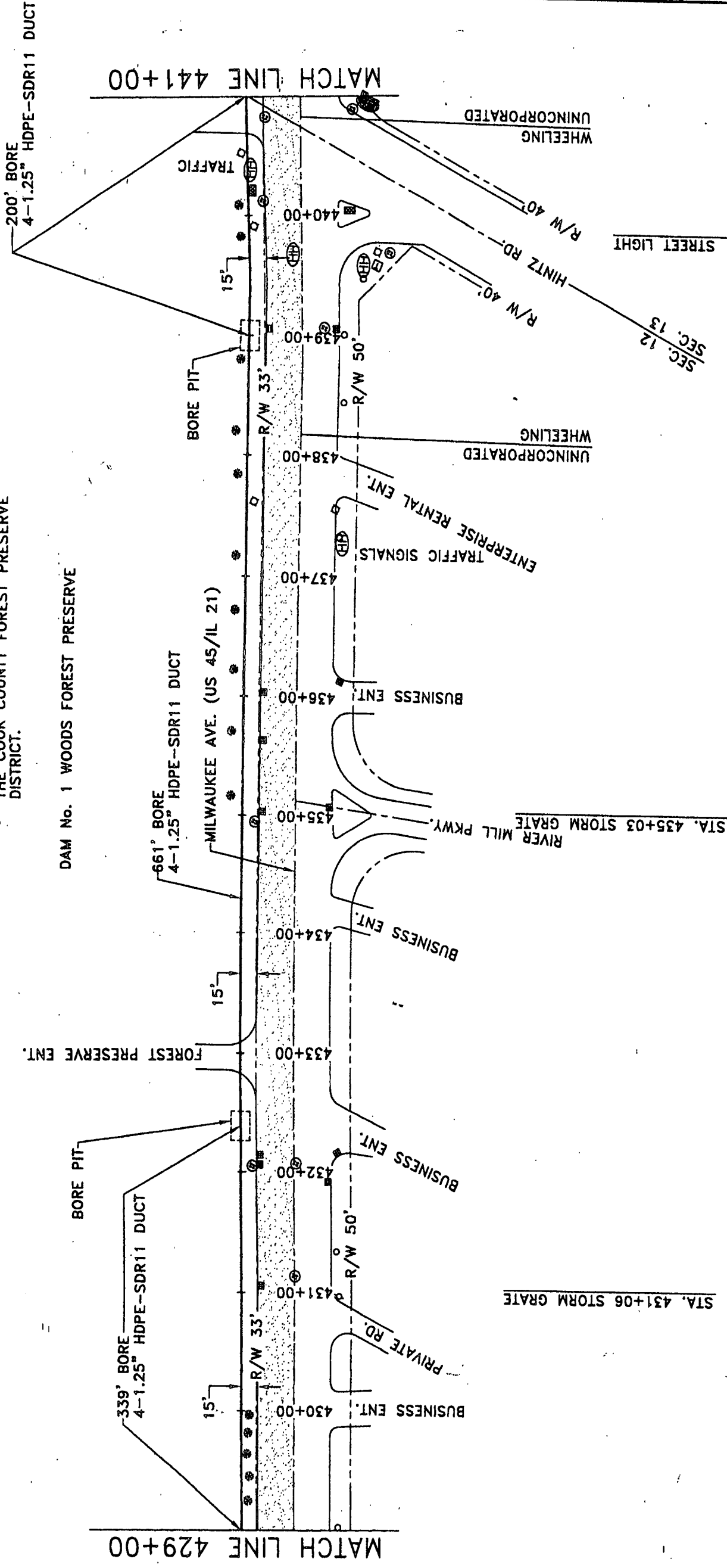
HUNTERS & ASSOC. INC

HUNTERS & ASSOCIATES, INC.

MFN - VERNON HILLS - PROSPECT HEIGHTS
 COOK COUNTY, IL
 CITY OF WHEELING & UNINCORPORATED
 SEC. 12 & 13
 T45N1 - R11E

= ROAD R/W OWNED IN-FEE BY
 THE COOK COUNTY FOREST PRESERVE
 DISTRICT.

DAM No. 1 WOODS FOREST PRESERVE



NOTE: BORE PITS AND RUNNING LINES WERE FIELD REVIEWED BY MR. DAN WEBER OF THE FOREST PRESERVE ON 9/28/00.
 CAUTION: BEFORE CONSTRUCTION STARTS, THE BORE PITS AND RUNNING LINES STAKING WILL BE APPROVED BY AN OFFICER OF THE FOREST PRESERVE. ALL DEVIATION WILL BE APPROVED BY THE FOREST PRESERVE PRIOR TO CONSTRUCTION.

24" X 24" OPENINGS IN THE ROADWAY MAY BE REQUIRED TO VERIFY SIZE & DEPTH OF EXISTING UTILITIES FOR SAFETY PURPOSES.

SINGLE LANE CLOSURES MAY BE REQUIRED & WILL BE CONDUCTED IN ACCORDANCE WITH THE ILLINOIS MANUAL ON UNIFORM TRAFFIC CONTROL DEVICES.

THE LOCATION OF ALL R/W AND PROPERTY LINES ON THIS DRAWING WERE DETERMINED SOLELY BY USE OF READILY AVAILABLE PLAT MAPS. NO SURVEYS WERE CONDUCTED IN ASCERTAINING R/W LOCATIONS. CONSTRUCTION RESOURCES, INC. AND HUNTERS & ASSOCIATES, INC. CANNOT AND DO NOT WARRANT THE ACCURACY OF THE R/W AND PROPERTY LINES ON THIS DRAWING.

(FH)	SLACK HANDHOLE	(S)	SIGN	(E)	ELECTRIC
(CB)	CATCH BASIN	(M)	MAILBOX	(SD)	STORM DRAIN
(FH)	FIRE HYDRANT	(T)	POLE	(SS)	SANITARY SEWER
(PB)	POWER BOX	(TR)	STREET LIGHT	(G)	GAS
		(P)	PEDESTAL	(TV)	CABLE TELEVISION
				(W)	WATER

NOTE: BORE PITS AND RUNNING LINES WERE FIELD REVIEWED BY MR. DAN WEBER OF THE FOREST PRESERVE ON 9/28/00.
 CAUTION: BEFORE CONSTRUCTION STARTS, THE BORE PITS AND RUNNING LINES STAKING WILL BE APPROVED BY AN OFFICER OF THE FOREST PRESERVE. ALL DEVIATION WILL BE APPROVED BY THE FOREST PRESERVE PRIOR TO CONSTRUCTION.

24" X 24" OPENINGS IN THE ROADWAY MAY BE REQUIRED TO VERIFY SIZE & DEPTH OF EXISTING UTILITIES FOR SAFETY PURPOSES.

SINGLE LANE CLOSURES MAY BE REQUIRED & WILL BE CONDUCTED IN ACCORDANCE WITH THE ILLINOIS MANUAL ON UNIFORM TRAFFIC CONTROL DEVICES.

THE LOCATION OF ALL R/W AND PROPERTY LINES ON THIS DRAWING WERE DETERMINED SOLELY BY USE OF READILY AVAILABLE PLAT MAPS. NO SURVEYS WERE CONDUCTED IN ASCERTAINING R/W LOCATIONS. CONSTRUCTION RESOURCES, INC. AND HUNTERS & ASSOCIATES, INC. CANNOT AND DO NOT WARRANT THE ACCURACY OF THE R/W AND PROPERTY LINES ON THIS DRAWING.

MAT. - ACT. LIST	QUANTITY
FIBER	1200'
TRACK FLOW	0'
OPEN CUT	0'
TRENCH	0'
DIRECTIONAL BORE	1200'
BRIDGE ATTACHMENT	0'
BALLAST DECK	0'
8" B.I.P.	0'
4" HDPE-SDR11	4800'
1.25" HDPE-SDR11	0'
MARKER TAPE	0'
MANHOLE	0
HANDHOLE	0

CONTRACT NO:	XX
DRAWING NO:	057
DATE DRAWN:	09/29/00
SCALE:	1" = 100'
DRAWN BY:	S.E.
PLOT DATE:	09/29/00
SHEET	37 OF 46

TITLE:	HOUSEHOLD FINANCE
LOOP:	
SEGMENT:	
SITE ADDRESS:	

NOTES:

- PROPERTY LINES ARE APPROXIMATE AND ARE SHOWN FOR INFORMATION ONLY.
- LIMITS OF ROW TO BE DETERMINED PRIOR TO CONSTRUCTION.
- LOCATIONS OF EXISTING UTILITIES ARE APPROX. AND MUST BE VERIFIED IN THE FIELD BY THE CONTRACTOR.
- ALL PIPELINE CROSSINGS TO BE HAND EXPOSED PRIOR TO CONSTRUCTION.
- ELEVATIONS ARE BASED ON ARBITRARY DATUM.



METRO MEDIA
 FIBER NETWORK

HUNTERS & ASSOC. IN

EXHIBIT A

HUNTERS & ASSOCIATES, INC.
 1100 N. LAKE ST. SUITE 1100
 CHICAGO, IL 60610
 TEL: 312.235.1100
 FAX: 312.235.1101

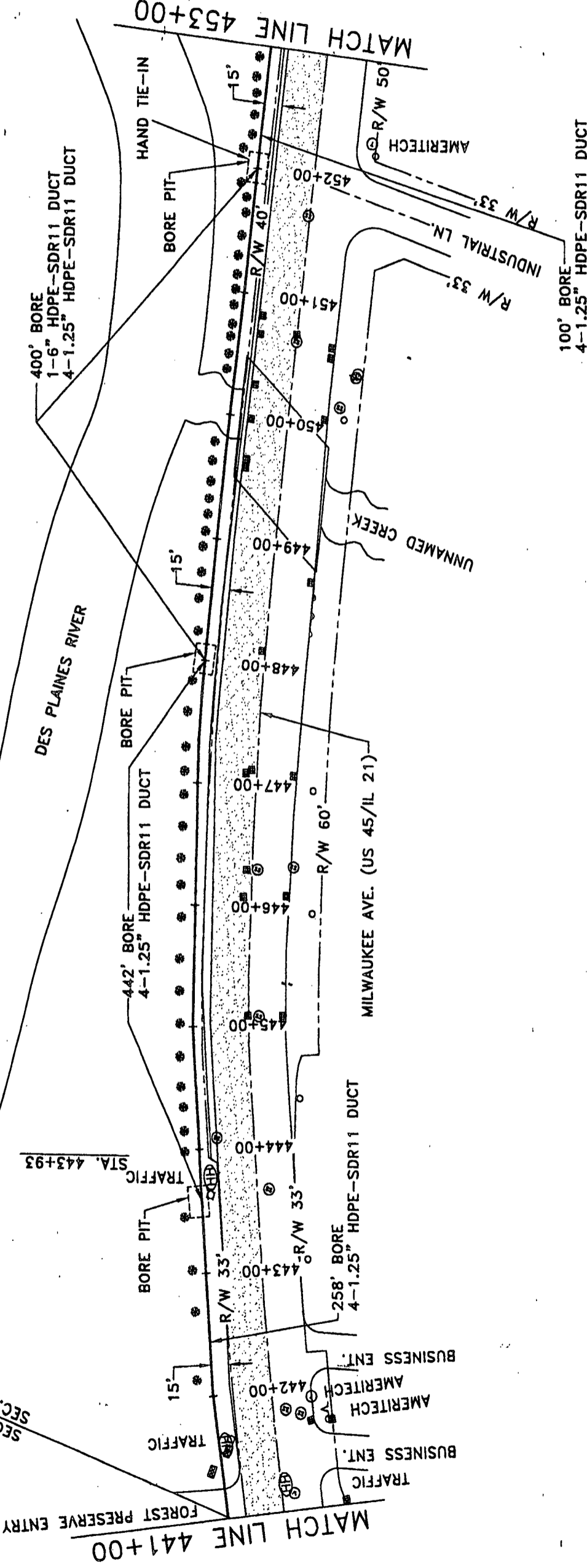
MFN - VERNON HILLS - PROSPECT HEIGHTS
 COOK COUNTY, IL
 CITY OF UNINCORPORATED
 SEC. 12 & 13
 T3281 - RT1E

= ROAD R/W OWNED IN-FEE BY
 THE COOK COUNTY FOREST PRESERVE
 DISTRICT.

DAM No. 1 WOODS FOREST PRESERVE

METRO MEDIA
 FIBER NETWORK

HUNTERS & ASSOC. IN



MATCH LINE 441+00

MATCH LINE 453+00

NOTES:

1. PROPERTY LINES ARE APPROXIMATE AND ARE SHOWN FOR INFORMATION ONLY.
2. LIMITS OF ROW TO BE DETERMINED PRIOR TO CONSTRUCTION.
3. LOCATIONS OF EXISTING UTILITIES ARE APPROX. AND MUST BE VERIFIED IN THE FIELD BY THE CONTRACTOR.
4. ALL PIPELINE CROSSINGS TO BE HAND EXPOSED PRIOR TO CONSTRUCTION.
5. ELEVATIONS ARE BASED ON ARBITRARY DATUM.

LOOP:
 SEGMENT:
 SITE ADDRESS:

24" X 24" OPENINGS IN THE ROADWAY MAY BE REQUIRED TO VERIFY SIZE & DEPTH OF EXISTING UTILITIES FOR SAFETY PURPOSES.

SINGLE LANE CLOSURES MAY BE REQUIRED & WILL BE CONDUCTED IN ACCORDANCE WITH THE ILLINOIS MANUAL ON UNIFORM TRAFFIC CONTROL DEVICES.

THE LOCATION OF ALL R/W AND PROPERTY LINES ON THIS DRAWING WERE DETERMINED SOLELY BY USE OF READILY AVAILABLE PLAT MAPS. NO SURVEYS WERE CONDUCTED IN ASCERTAINING R/W LOCATIONS. CONSTRUCTION RESOURCES, INC. AND HUNTERS & ASSOCIATES, INC. CANNOT AND DO NOT WARRANT THE ACCURACY OF THE R/W AND PROPERTY LINES ON THIS DRAWING.

NOTE:
 BORE PITS AND RUNNING LINES WERE FIELD REVIEWED BY MR. DAN WEBER OF THE FOREST PRESERVE ON 9/28/00.
CAUTION:
 BEFORE CONSTRUCTION STARTS, THE BORE PITS AND RUNNING LINE STAKING WILL BE APPROVED BY AN OFFICER OF THE FOREST PRESERVE. ALL DEVIATION WILL BE APPROVED BY THE FOREST PRESERVE PRIOR TO CONSTRUCTION.

- (HH) SLACK HANDHOLE
- (C) CATCH BASIN
- (FH) FIRE HYDRANT
- (PB) POWER BOX
- (S) SIGN
- (M) MAIL BOX
- (T) TREE
- (P) PEDESTAL
- (SD) STORM DRAIN
- (SS) SANITARY SEWER
- (G) GAS
- (TEL) TELEPHONE
- (E) ELECTRIC
- (OHP) OVER HEAD POWER
- (TV) CABLE TELEVISION
- (V) WATER

MAT. - ACT. LIST	QUANTITY
FIBER	1200'
TRACK PLOW	0'
OPEN CUT	0'
TRENCH	0'
DIRECTIONAL BORE	1200'
BRIDGE ATTACHMENT	0'
BALLAST DECK	0'
8" B.L.P.	400'
6" HDPE-SDR11	4800'
1.25" HDPE-SDR11	0'
MARKER TAPE	0'
MANHOLE	0
HANDHOLE	0

TITLE: **HOUSEHOLD FINANCE**

CONTRACT NO:
 DRAWING NO: 038
 DATE DRAWN: 09/29/00
 SCALE: 1" = 100'
 PLOT DATE: 09/29/00
 DRAWN BY: S.E.
 SHEET 38 OF 46

EXHIBIT **A**

CAUTION:
 BEFORE CONSTRUCTION STARTS, THE BORE PITS AND RUNNING
 LINE STAKING WILL BE APPROVED BY AN OFFICER OF THE FOREST
 PRESERVE. ALL DEVIATION WILL BE APPROVED BY THE FOREST
 PRESERVE PRIOR TO CONSTRUCTION.

NOTE:
 BORE PITS AND RUNNING LINES WERE FIELD REVIEWED BY
 MR. DAN WEBER OF THE FOREST PRESERVE ON 9/28/00.

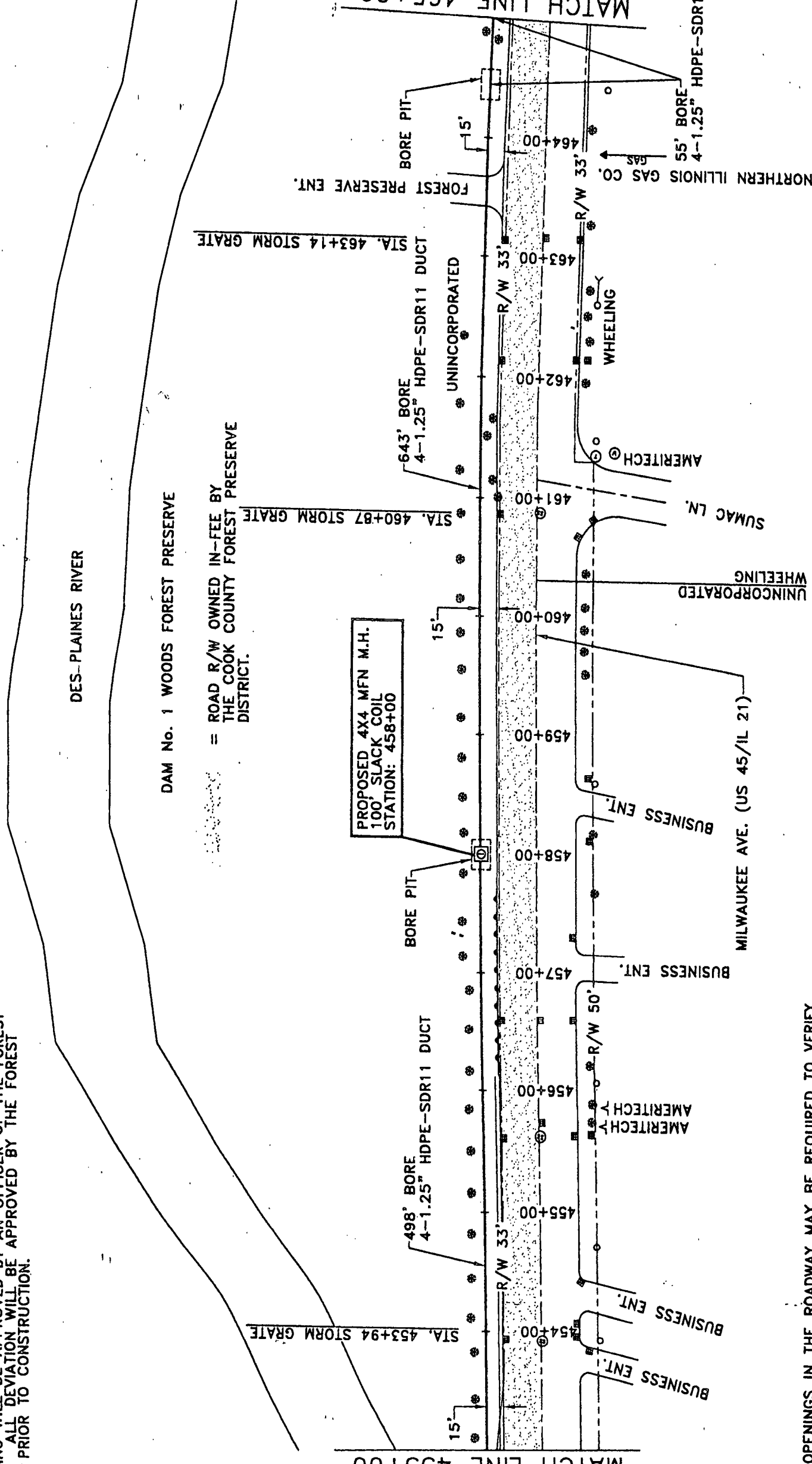
DES-PLAINES RIVER

DAM No. 1 WOODS FOREST PRESERVE

= ROAD R/W OWNED IN-FEE BY
 THE COOK COUNTY FOREST PRESERVE
 DISTRICT.

MATCH LINE 453+00

MATCH LINE 465+00



24" X 24" OPENINGS IN THE ROADWAY MAY BE REQUIRED TO VERIFY
 SIZE & DEPTH OF EXISTING UTILITIES FOR SAFETY PURPOSES.

SINGLE LANE CLOSURES MAY BE REQUIRED & WILL BE
 CONDUCTED IN ACCORDANCE WITH THE ILLINOIS MANUAL ON
 UNIFORM TRAFFIC CONTROL DEVICES.

THE LOCATION OF ALL R/W AND PROPERTY LINES ON
 THIS DRAWING WERE DETERMINED SOLELY BY USE
 OF READILY AVAILABLE PLAT MAPS. NO SURVEYS
 WERE CONDUCTED IN ASCERTAINING R/W
 LOCATIONS. CONSTRUCTION RESOURCES, INC. AND
 HUNTERS & ASSOCIATES, INC. CANNOT AND DO NOT
 WARRANT THE ACCURACY OF THE R/W AND
 PROPERTY LINES ON THIS DRAWING.

(H)	FIBER	(E)	ELECTRIC
(C)	CATCH BASIN	(S)	STORM DRAIN
(F)	FIRE HYDRANT	(SF)	SANITARY SEWER
(P)	POWER BOX	(G)	GAS
(HH)	SLACK HANDHOLE	(T)	TELEPHONE
(M)	4 X 4 MANHOLE	(V)	VATER
(O)	POLE	(TV)	CABLE TELEVISION
(S)	MAILBOX	(W)	WHEELING
(T)	TREE	(W)	WHEELING
(P)	PEDESTAL	(W)	WHEELING

MAT. - ACT. LIST	QUANTITY
FIBER	1300'
TRACK PLOW	0'
OPEN CUT	0'
TRENCH	0'
DIRECTIONAL BORE	1196'
BRIDGE ATTACHMENT	0'
BALLAST DECK	0'
8" B.I.P.	0'
4" HDPE-SDR11	0'
1.25" HDPE-SDR11	4784'
MARKER TAPE	0'
MANHOLE	1
HANDHOLE	0

NOTES:

1. PROPERTY LINES ARE APPROXIMATE AND ARE SHOWN FOR INFORMATION ONLY.
2. LIMITS OF ROW TO BE DETERMINED PRIOR TO CONSTRUCTION.
3. LOCATIONS OF EXISTING UTILITIES ARE APPROX. AND MUST BE VERIFIED IN THE FIELD BY THE CONTRACTOR.
4. ALL PIPELINE CROSSINGS TO BE HAND EXPOSED PRIOR TO CONSTRUCTION.
5. ELEVATIONS ARE BASED ON ARBITRARY DATUM.

LOOP:
 SEGMENT:
 SITE ADDRESS:

TITLE:
HOUSEHOLD FINANCE

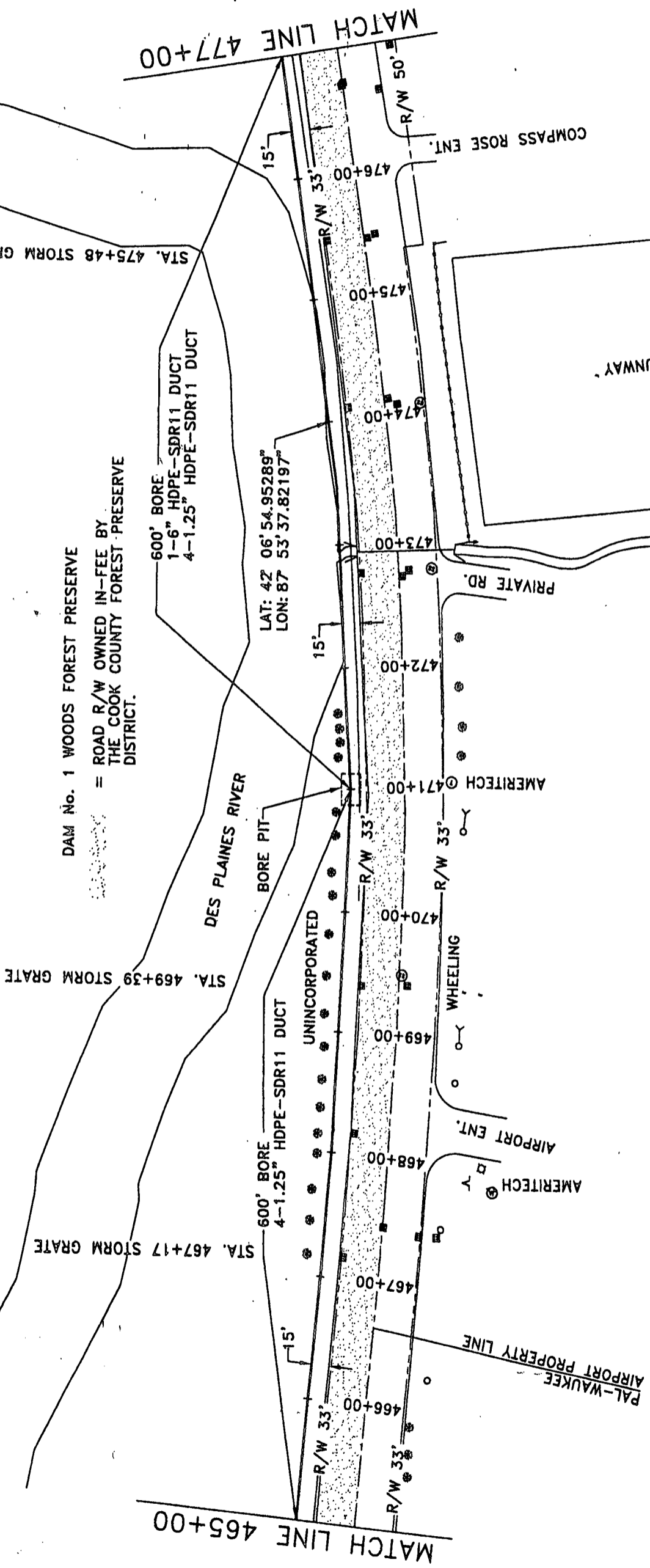
CONTRACT NO:
 DRAWING NO: 039
 DATE DRAWN: 09/29/00
 SCALE: 1" = 100'
 PLOT DATE: 09/29/00
 DRAWN BY: S.E.
 SHEET 39 OF 46



HUNTERS & ASSOC. IN

11/01/14 G. W. WILSON, INC.

MFN - VERNON HILLS - PROSPECT HEIGHTS
 COOK COUNTY, IL
 CITY OF WHEELING & UNINCORPORATED
 SEC. 13
 T&E - RITE



DAM No. 1 WOODS FOREST PRESERVE
 = ROAD R/W OWNED IN-FEE BY
 THE COOK COUNTY FOREST PRESERVE
 DISTRICT.

600' BORE
 1-6" HDPE-SDR11 DUCT
 4-1.25" HDPE-SDR11 DUCT

LAT: 42 06' 54.95289"
 LON: 87 53' 37.82197"

600' BORE
 4-1.25" HDPE-SDR11 DUCT

NOTE: BORE PITS AND RUNNING LINES WERE FIELD REVIEWED BY MR. DAN WEBER OF THE FOREST PRESERVE ON 9/28/00.
 CAUTION: BEFORE CONSTRUCTION STARTS, THE BORE PITS AND RUNNING LINE STAKING WILL BE APPROVED BY AN OFFICER OF THE FOREST PRESERVE. ALL DEVIATION WILL BE APPROVED BY THE FOREST PRESERVE PRIOR TO CONSTRUCTION.

24" X 24" OPENINGS IN THE ROADWAY MAY BE REQUIRED TO VERIFY SIZE & DEPTH OF EXISTING UTILITIES FOR SAFETY PURPOSES.
 SINGLE LANE CLOSURES MAY BE REQUIRED & WILL BE CONDUCTED IN ACCORDANCE WITH THE ILLINOIS MANUAL ON UNIFORM TRAFFIC CONTROL DEVICES.

THE LOCATION OF ALL R/W AND PROPERTY LINES ON THIS DRAWING WERE DETERMINED SOLELY BY USE OF READILY AVAILABLE PLAT MAPS. NO SURVEYS WERE CONDUCTED IN ASCERTAINING R/W LOCATIONS. CONSTRUCTION RESOURCES, INC. AND HUNTERS & ASSOCIATES, INC. CANNOT AND DO NOT WARRANT THE ACCURACY OF THE R/W AND PROPERTY LINES ON THIS DRAWING.

PAL-WAUKEE AIRPORT

AIRPORT RUNWAY

PRIVATE RD.

WHEELING DRAINAGE DITCH

MATCH LINE 465+00

MATCH LINE 477+00

NOTES:

1. PROPERTY LINES ARE APPROXIMATE AND ARE SHOWN FOR INFORMATION ONLY.
2. LIMITS OF ROW TO BE DETERMINED PRIOR TO CONSTRUCTION.
3. LOCATIONS OF EXISTING UTILITIES ARE APPROX. AND MUST BE VERIFIED IN THE FIELD BY THE CONTRACTOR.
4. ALL PIPELINE CROSSINGS TO BE HAND EXPOSED PRIOR TO CONSTRUCTION.
5. ELEVATIONS ARE BASED ON ARBITRARY DATUM.

METRO MEDIAL
 FIBER NETWORK

HUNTERS & ASSOC. IN

LOOP:

SEGMENT:

SITE ADDRESS:

TITLE:

HOUSEHOLD FINANCE

CONTRACT NO:

DRAWING NO: 040

DATE DRAWN: 09/29/00

SCALE: 1" = 100'

FLOT DATE: 09/29/00

MAT. - ACT. LIST	QUANTITY
FIBER	1200'
TRACK FLOW	0'
OPEN CUT	0'
TRENCH	0'
DIRECTIONAL BORE	1200'
BRIDGE ATTACHMENT	0'
BALLAST DECK	0'
8" B.I.P.	0'
6" HDPE-SDR11	600'
1.25" HDPE-SDR11	4800'
MARKER TAPE	0'
MANHOLE	0
HANDHOLE	0

Ⓢ	FIBER	Ⓢ	SLACK HANDHOLE	Ⓢ	SIGN	Ⓢ	STORM DRAIN	Ⓢ	ELECTRIC
Ⓢ	CATCH BASIN	Ⓢ	4 X 4 MANHOLE	Ⓢ	MAILBOX	Ⓢ	SANITARY SEWER	Ⓢ	OVER HEAD POWER
Ⓢ	FIRE HYDRANT	Ⓢ	POLE	Ⓢ	TREE	Ⓢ	GAS	Ⓢ	CABLE TELEVISION
Ⓢ	POWER BOX	Ⓢ	STREET LIGHT	Ⓢ	PEDESTAL	Ⓢ	TELEPHONE	Ⓢ	WATER

XX

DRAWN BY: S.E.

SHEET 40 OF 46

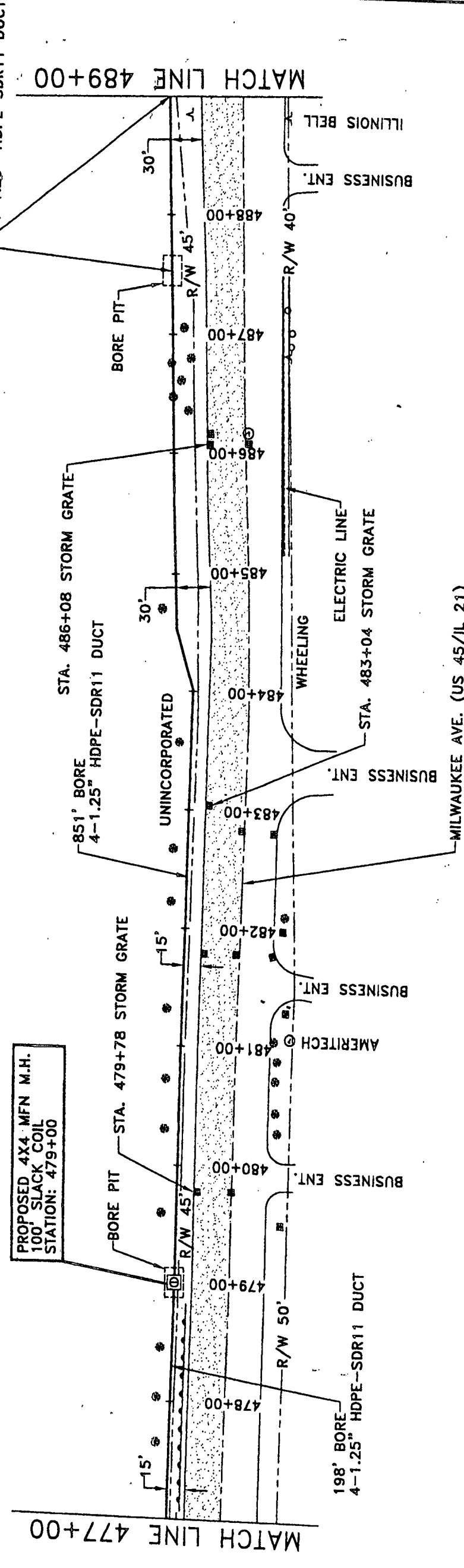
EXHIBIT A

MFN - VERNON HILLS - PROSPECT HEIGHTS
 COOK COUNTY, IL
 CITY OF WHEELING & UNINCORPORATED
 SEC. 13
 T4221 - 011E

DAM No. 1 WOODS FOREST PRESERVE
 = ROAD R/W OWNED IN-FEE BY
 THE COOK COUNTY FOREST PRESERVE
 DISTRICT.



HUNTERS & ASSOC.



NOTES:

1. PROPERTY LINES ARE APPROXIMATE, ARE SHOWN FOR INFORMATION ONLY.
2. LIMITS OF ROW TO BE DETERMINED PRIOR TO CONSTRUCTION.
3. LOCATIONS OF EXISTING UTILITIES ARE APPROX. AND MUST BE VERIFIED IN THE FIELD BY THE CONTRACTOR.
4. ALL PIPELINE CROSSINGS TO BE HAND EXPOSED PRIOR TO CONSTRUCTION.
5. ELEVATIONS ARE BASED ON ARBITRARY DATUM.

LOOP:
 SEGMENT:
 SITE ADDRESS:

24" X 24" OPENINGS IN THE ROADWAY MAY BE REQUIRED TO VERIFY SIZE & DEPTH OF EXISTING UTILITIES FOR SAFETY PURPOSES.

SINGLE LANE LANE CLOSURES MAY BE REQUIRED & WILL BE CONDUCTED IN ACCORDANCE WITH THE ILLINOIS MANUAL ON UNIFORM TRAFFIC CONTROL DEVICES.

THE LOCATION OF ALL R/W AND PROPERTY LINES ON THIS DRAWING WERE DETERMINED SOLELY BY USE OF READILY AVAILABLE PLAT MAPS. NO SURVEYS WERE CONDUCTED IN ASCERTAINING R/W LOCATIONS. CONSTRUCTION RESOURCES, INC. AND HUNTERS & ASSOCIATES, INC. CANNOT AND DO NOT WARRANT THE ACCURACY OF THE R/W AND PROPERTY LINES ON THIS DRAWING.

NOTE:
 BORE PITS AND RUNNING LINES WERE FIELD REVIEWED BY MR. DAN WEBER OF THE FOREST PRESERVE ON 9/28/00.
CAUTION:
 BEFORE CONSTRUCTION STARTS, THE BORE PITS AND RUNNING LINE STAKING WILL BE APPROVED BY AN OFFICER OF THE FOREST PRESERVE. ALL DEVIATION WILL BE APPROVED BY THE FOREST PRESERVE PRIOR TO CONSTRUCTION.

(H)	FIBER	(S)	SLACK HANDHOLE	(E)	ELECTRIC
(B)	CATCH BASIN	(M)	MAIL BOX	(SD)	STORM DRAIN
(F)	FIRE HYDRANT	(T)	TREE	(SS)	SANITARY SEWER
(P)	POWER BOX	(PE)	PEDESTAL	(G)	GAS
		(ST)	STREET LIGHT	(TV)	CABLE TELEVISION
		(V)	VATER		

MAT. - ACT. LIST	QUANTITY
FIBER	1300'
TRACK FLOW	0'
OPEN CUT	0'
TRENCH	0'
DIRECTIONAL BORE	1195'
BRIDGE ATTACHMENT	0'
BALLAST DECK	0'
8" B.I.P.	0'
4" HDPE-SDR11	0'
1.25" HDPE-SDR11	4784'
MARKER TAPE	0'
MANHOLE	1
HANDHOLE	0

TITLE: HOUSEHOLD FINANCE

CONTRACT NO: XX

DRAWING NO: 041

DATE DRAWN: 09/29/00

SCALE: 1" = 100'

PLOT DATE: 09/29/00

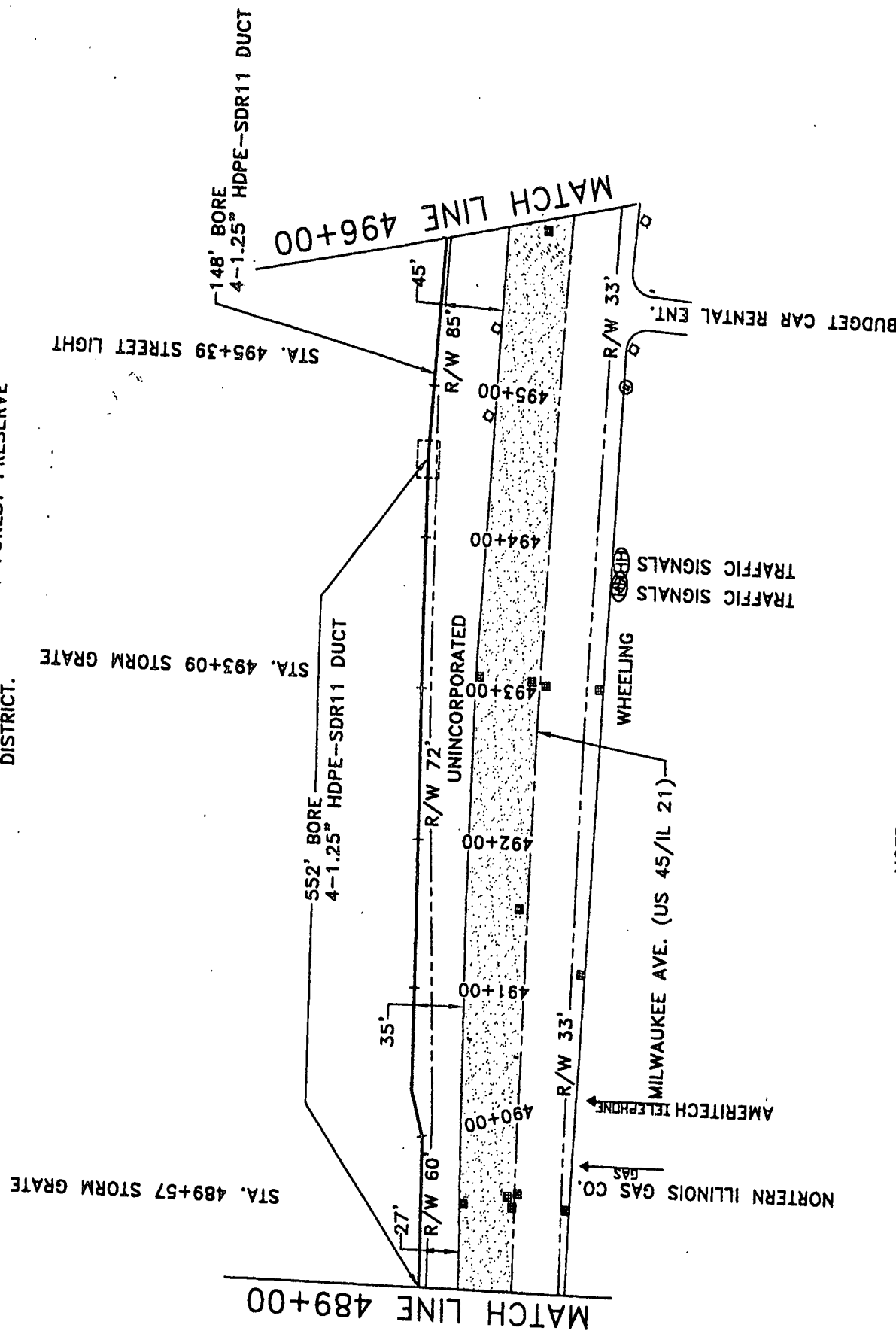
DRAWN BY: S.E.

SHEET 41 OF 46

EXHIBIT **A**

... .. LAWSON HILLS - PROSPECT HEIGHTS
 COOK COUNTY, IL.
 CITY OF UNINCORPORATED & WHEELING
 SEC. 13
 TOWN - R1E

DAM No. 1 WOODS FOREST PRESERVE
 = ROAD R/W OWNED IN-FEE BY
 THE COOK COUNTY FOREST PRESERVE
 DISTRICT.



24" X 24" OPENINGS IN THE ROADWAY MAY BE REQUIRED TO VERIFY
 SIZE & DEPTH OF EXISTING UTILITIES FOR SAFETY PURPOSES.
 SINGLE LANE CLOSURES MAY BE REQUIRED & WILL BE
 CONDUCTED IN ACCORDANCE WITH THE ILLINOIS MANUAL ON
 UNIFORM TRAFFIC CONTROL DEVICES.

THE LOCATION OF ALL R/W AND PROPERTY LINES ON
 THIS DRAWING WERE DETERMINED SOLELY BY USE
 OF READILY AVAILABLE PLAT MAPS. NO SURVEYS
 WERE CONDUCTED IN ASCERTAINING R/W
 LOCATIONS. CONSTRUCTION RESOURCES, INC. AND
 HUNTERS & ASSOCIATES, INC. CANNOT AND DO NOT
 WARRANT THE ACCURACY OF THE R/W AND
 PROPERTY LINES ON THIS DRAWING.

NOTE:
 BORE PITS AND RUNNING LINES WERE FIELD REVIEWED BY
 MR. DAN WEBER OF THE FOREST PRESERVE ON 9/28/00.
 CAUTION:
 BEFORE CONSTRUCTION STARTS, THE BORE PITS AND RUNNING
 LINE STAKING WILL BE APPROVED BY AN OFFICER OF THE FOREST
 PRESERVE. ALL DEVIATION WILL BE APPROVED BY THE FOREST
 PRESERVE PRIOR TO CONSTRUCTION.

(H)	SLACK HANDHOLE	(S)	SIGN	(E)	ELECTRIC
(C)	CATCH BASIN	(M)	MAIL BOX	(SD)	STORM DRAIN
(F)	FIRE HYDRANT	(T)	TREE	(SS)	SANITARY SEWER
(P)	POWER BOX	(ST)	STREET LIGHT	(G)	GAS
		(PE)	PEDESTAL	(TV)	CABLE TELEVISION
		(W)	WATER		

LOOP:

SEGMENT:

SITE ADDRESS:

TITLE:

HOUSEHOLD FINANCE

CONTRACT NO:	XX
DRAWING NO:	042
DATE DRAWN:	09/29/00
SCALE:	1" = 100'
DRAWN BY:	S.E.
PLOT DATE:	09/29/00
SHEET	42 OF 46

NOTES:

1. PROPERTY LINES ARE APPROXIMATE ARE SHOWN FOR INFORMATION ONLY
2. LIMITS OF ROW TO BE DETERMINED PRIOR TO CONSTRUCTION.
3. LOCATIONS OF EXISTING UTILITIES ARE APPROX. AND MUST BE VERIFIED IN THE FIELD BY THE CONTRACTOR.
4. ALL PIPELINE CROSSINGS TO BE HAND EXPOSED PRIOR TO CONSTRUCTION.
5. ELEVATIONS ARE BASED ON ARBITRARY DATUM.

METROMED
 FIBER NETWORK

HUNTERS & ASSOC.

A

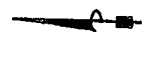
UNIVERSAL UTILITIES, INC.
 200 N. 35TH ST. SUITE 200
 CHICAGO, IL 60640

MFN - VERNON HILLS - PROSPECT HEIGHTS
 COOK COUNTY, IL
 CITY OF UNINCORPORATED & PROSPECT HEIGHTS
 SEC. 13, 14, 19, & 24
 TOWN - CRYE & BRIZE

DATE	REVISION	BY	CHK

METRO MEDICAL
 FIBER NETWORK

HUNTERS & ASSOC. II

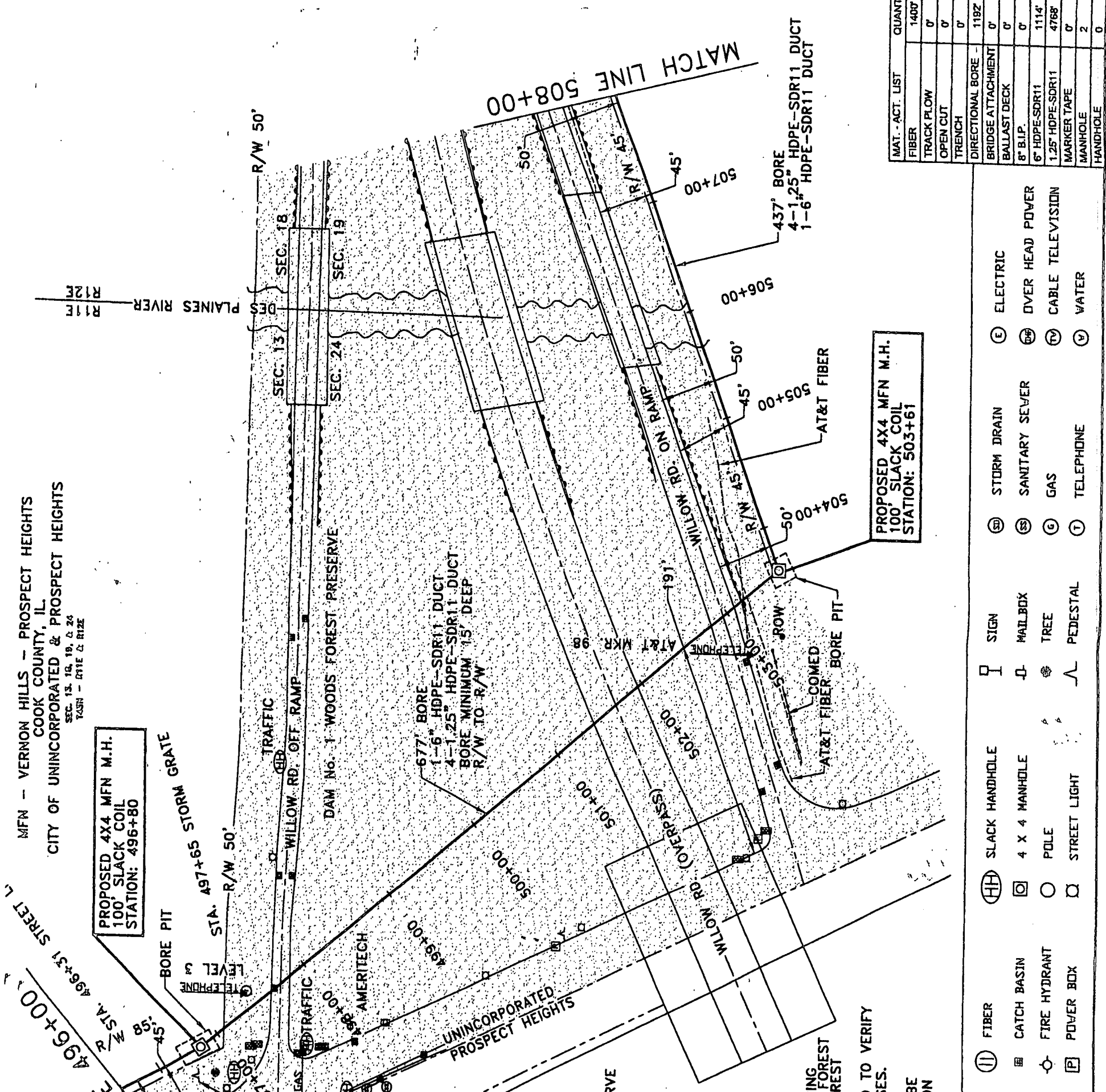


NOTES:

1. PROPERTY LINES ARE APPROXIMATE AND ARE SHOWN FOR INFORMATION ONLY.
2. LIMITS OF ROW TO BE DETERMINED PRIOR TO CONSTRUCTION.
3. LOCATIONS OF EXISTING UTILITIES ARE APPROX. AND MUST BE VERIFIED IN THE FIELD BY THE CONTRACTOR.
4. ALL PIPELINE CROSSINGS TO BE HAND EXPOSED PRIOR TO CONSTRUCTION.
5. ELEVATIONS ARE BASED ON ARBITRARY DATUM.

NOTE: BORE PITS AND RUNNING LINES WERE FIELD REVIEWED BY MR. DAN WEBER OF THE FOREST PRESERVE ON 9/28/00.
 CAUTION: BEFORE CONSTRUCTION STARTS THE BORE PITS AND RUNNING LINE STAKING WILL BE APPROVED BY AN OFFICER OF THE FOREST PRESERVE. ALL DEVIATION WILL BE APPROVED BY THE FOREST PRESERVE PRIOR TO CONSTRUCTION.
 24" X 24" OPENINGS IN THE ROADWAY MAY BE REQUIRED TO VERIFY SIZE & DEPTH OF EXISTING UTILITIES FOR SAFETY PURPOSES.
 SINGLE LANE ROAD CLOSURES MAY BE REQUIRED & WILL BE CONDUCTED IN ACCORDANCE WITH THE ILLINOIS MANUAL ON UNIFORM TRAFFIC CONTROL DEVICES.

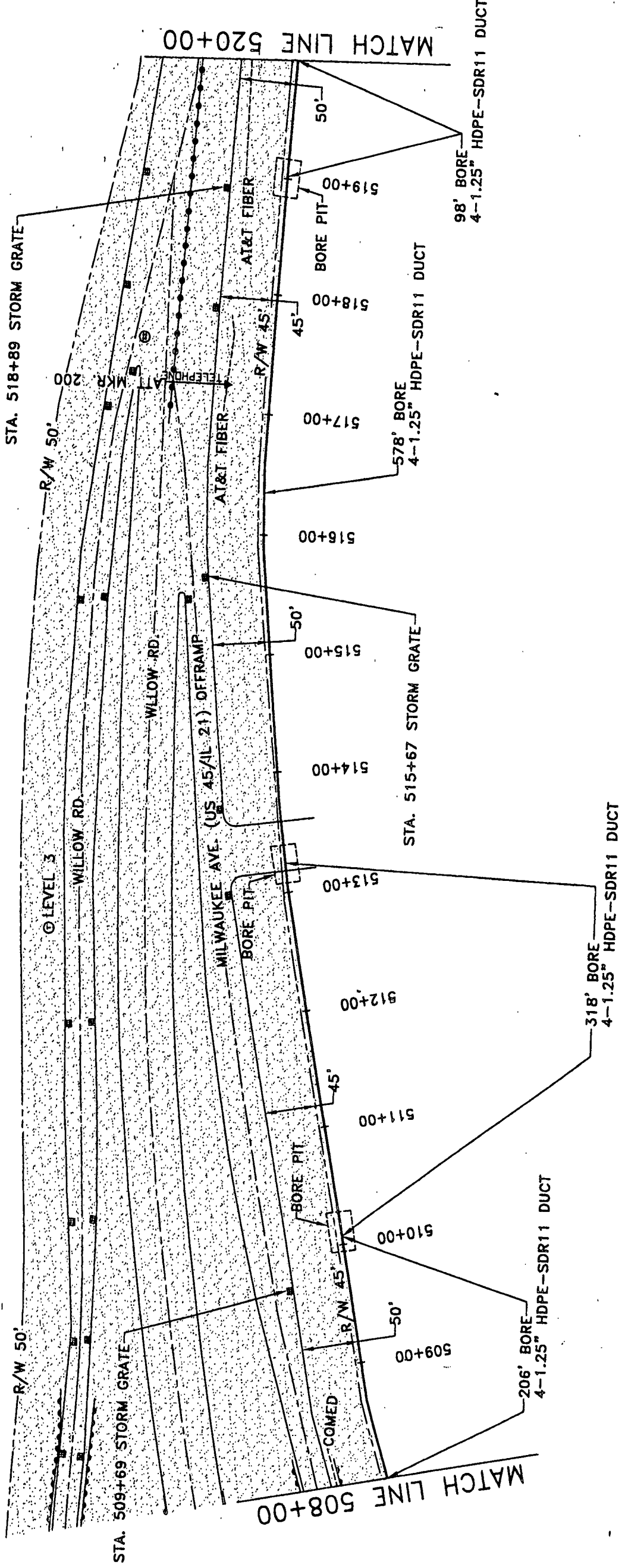
THE LOCATION OF ALL R/W AND PROPERTY LINES ON THIS DRAWING WERE DETERMINED SOLELY BY USE OF READILY AVAILABLE PLAT MAPS. NO SURVEYS WERE CONDUCTED IN ASCERTAINING R/W LOCATIONS. CONSTRUCTION RESOURCES, INC. AND HUNTERS & ASSOCIATES, INC. CANNOT AND DO NOT WARRANT THE ACCURACY OF THE R/W AND PROPERTY LINES ON THIS DRAWING.



MAT.	ACT. LIST	QUANTITY
FIBER		1400'
TRACK FLOW		0'
OPEN CUT		0'
TRENCH		0'
DIRECTIONAL BORE		1192'
BRIDGE ATTACHMENT		0'
BALLAST DECK		0'
8" B.I.P.		0'
6" HDPE-SDR11		1114'
1.25" HDPE-SDR11		4768'
MARKER TAPE		0'
MANHOLE		2
HANDHOLE		0

SYMBOL	DESCRIPTION	SYMBOL	DESCRIPTION
Ⓛ	FIBER	Ⓛ	STORM DRAIN
Ⓜ	CATCH BASIN	Ⓛ	SANITARY SEWER
Ⓢ	FIRE HYDRANT	Ⓛ	GAS
Ⓟ	POWER BOX	Ⓛ	TELEPHONE
Ⓠ	SLACK HANDHOLE	Ⓛ	ELECTRIC
Ⓡ	4 X 4 MANHOLE	Ⓛ	OVER HEAD POWER
Ⓢ	POLE	Ⓛ	CABLE TELEVISION
Ⓣ	STREET LIGHT	Ⓛ	WATER
Ⓤ	MAILBOX	Ⓛ	
Ⓥ	TREE	Ⓛ	
Ⓦ	PEDESTAL		

PLT IV - VERMUN HILLS - PROSPECT HEIGHTS
 COOK COUNTY, IL
 CITY OF UNINCORPORATED
 SEC. 18, 19, 15, & 24
 T4221 - RTIE & RTZE
 DAM No. 1 WOODS FOREST PRESERVE
 = ROAD R/W OWNED IN-FEE BY
 THE COOK COUNTY FOREST PRESERVE
 DISTRICT.



METROMED
 FIBER NETWORK
 HUNTERS & ASSOC.

NOTES:

1. PROPERTY LINES ARE APPROXIMATE, ARE SHOWN FOR INFORMATION ONLY.
2. LIMITS OF ROW TO BE DETERMINED PRIOR TO CONSTRUCTION.
3. LOCATIONS OF EXISTING UTILITIES ARE APPROX. AND MUST BE VERIFIED IN THE FIELD BY THE CONTRACTOR.
4. ALL PIPELINE CROSSINGS TO BE HAND EXPOSED PRIOR TO CONSTRUCTION.
5. ELEVATIONS ARE BASED ON ARBITRARY DATUM.

LOOP:
 SEGMENT:
 SITE ADDRESS:

TITLE:
HOUSEHOLD FINANCE

CONTRACT NO:	
DRAWING NO:	043
DATE DRAWN:	09/29/00
SCALE:	1" = 100'
DRAWN BY:	S.E.
PLOT DATE:	09/29/00
SHEET	43 OF 46

MAT. - ACT. LIST	QUANTITY
FIBER	1200'
TRACK FLOW	0'
OPEN CUT	0'
TRENCH	0'
DIRECTIONAL BORE	1200'
BRIDGE ATTACHMENT	0'
BALLAST DECK	0'
8" B.L.P.	0'
4" HDPE-SDR11	0'
1.25" HDPE-SDR11	4800'
MARKER TAPE	0'
MANHOLE	0
HANDHOLE	0

NOTE: BORE PITS AND RUNNING LINES WERE FIELD REVIEWED BY MR. DAN WEBER OF THE FOREST PRESERVE ON 9/28/00.
 CAUTION: BEFORE CONSTRUCTION STARTS, THE BORE PITS AND RUNNING LINE STAKING WILL BE APPROVED BY AN OFFICER OF THE FOREST PRESERVE. ALL DEVIATION WILL BE APPROVED BY THE FOREST PRESERVE PRIOR TO CONSTRUCTION.

24" X 24" OPENINGS IN THE ROADWAY MAY BE REQUIRED TO VERIFY SIZE & DEPTH OF EXISTING UTILITIES, FOR SAFETY PURPOSES.

SINGLE LANE CLOSURES MAY BE REQUIRED & WILL BE CONDUCTED IN ACCORDANCE WITH THE ILLINOIS MANUAL ON UNIFORM TRAFFIC CONTROL DEVICES.

THE LOCATION OF ALL R/W AND PROPERTY LINES ON THIS DRAWING WERE DETERMINED SOLELY BY USE OF READILY AVAILABLE PLAT MAPS. NO SURVEYS WERE CONDUCTED IN ASCERTAINING R/W LOCATIONS. CONSTRUCTION RESOURCES, INC. AND HUNTERS & ASSOCIATES, INC. CANNOT AND DO NOT WARRANT THE ACCURACY OF THE R/W AND PROPERTY LINES ON THIS DRAWING.

(II) FIBER	(HH) SLACK HANDHOLE	(S) SIGN	(SD) STORM DRAIN	(E) ELECTRIC
(B) CATCH BASIN	(M) 4 X 4 MANHOLE	(M) MAIL BOX	(SS) SANITARY SEWER	(PH) OVER HEAD POWER
(H) FIRE HYDRANT	(P) POLE	(T) TREE	(G) GAS	(TV) CABLE TELEVISION
(P) POWER BOX	(S) STREET LIGHT	(P) PEDESTAL	(T) TELEPHONE	(V) WATER

EXHIBIT **A**

MFN - VERNON HILLS - PROSPECT HEIGHTS
 COOK COUNTY, IL
 CITY OF UNINCORPORATED
 SEC. 18 & SEC. 19
 T4281 - R12E

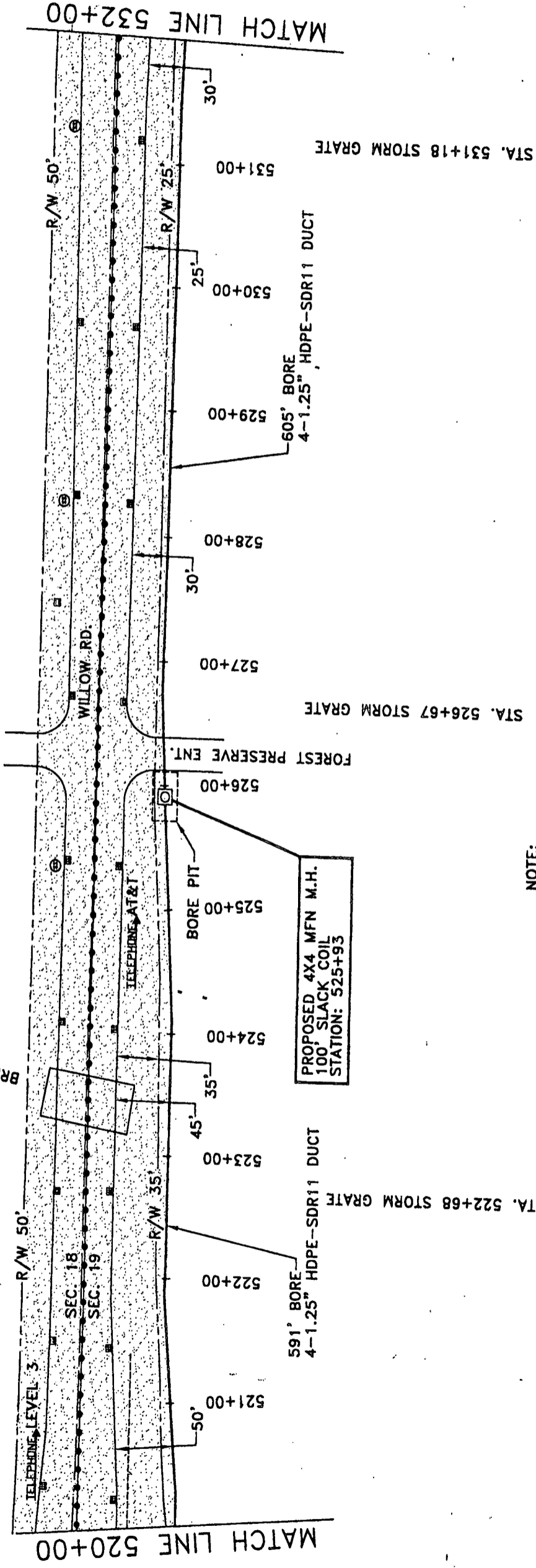
DAM No. 1 WOODS FOREST PRESERVE

= ROAD R/W OWNED IN-FEE BY
 THE COOK COUNTY FOREST PRESERVE
 DISTRICT.



TELEPHONE LEVEL 3

BRIDGE OVERPASS



24" X 24" OPENINGS IN THE ROADWAY MAY BE REQUIRED TO VERIFY SIZE & DEPTH OF EXISTING UTILITIES FOR SAFETY PURPOSES.

SINGLE LANE CLOSURES MAY BE REQUIRED & WILL BE CONDUCTED IN ACCORDANCE WITH THE ILLINOIS MANUAL ON UNIFORM TRAFFIC CONTROL DEVICES.

THE LOCATION OF ALL R/W AND PROPERTY LINES ON THIS DRAWING WERE DETERMINED SOLELY BY USE OF READILY AVAILABLE PLAT MAPS. NO SURVEYS WERE CONDUCTED IN ASCERTAINING R/W LOCATIONS. CONSTRUCTION RESOURCES, INC. AND HUNTERS & ASSOCIATES, INC. CANNOT AND DO NOT WARRANT THE ACCURACY OF THE R/W AND PROPERTY LINES ON THIS DRAWING.

NOTE: BORE PITS AND RUNNING LINES WERE FIELD REVIEWED BY MR. DAN WEBER OF THE FOREST PRESERVE ON 9/28/00. CAUTION:

BEFORE CONSTRUCTION STARTS, THE BORE PITS AND RUNNING LINE STAKING WILL BE APPROVED BY AN OFFICER OF THE FOREST PRESERVE. ALL DEVIATION WILL BE APPROVED BY THE FOREST PRESERVE PRIOR TO CONSTRUCTION.

(11) FIBER	(HH) SLACK HANDHOLE	(S) SIGN	(SD) STORM DRAIN	(E) ELECTRIC
(B) CATCH BASIN	(M) 4 X 4 MANHOLE	(M) MAILBOX	(SS) SANITARY SEWER	(P) OVER HEAD POWER
(H) FIRE HYDRANT	(P) POLE	(T) TREE	(G) GAS	(TV) CABLE TELEVISION
(P) POWER BOX	(S) STREET LIGHT	(PE) PEDESTAL	(T) TELEPHONE	(V) WATER

MAT. - ACT. LIST	QUANTITY
FIBER	1300'
TRACK FLOW	0'
OPEN CUT	0'
TRENCH	0'
DIRECTIONAL BORE	1196'
BRIDGE ATTACHMENT	0'
BALLAST DECK	0'
8" B.I.P.	0'
4" HDPE-SDR11	0'
1.25" HDPE-SDR11	4784'
MARKER TAPE	0'
MANHOLE	1
HANDHOLE	0

NOTES:

1. PROPERTY LINES ARE APPROXIMATE AND ARE SHOWN FOR INFORMATION ONLY.
2. LIMITS OF ROW TO BE DETERMINED PRIOR TO CONSTRUCTION.
3. LOCATIONS OF EXISTING UTILITIES ARE APPROX. AND MUST BE VERIFIED IN THE FIELD BY THE CONTRACTOR.
4. ALL PIPELINE CROSSINGS TO BE HAND EXPOSED PRIOR TO CONSTRUCTION.
5. ELEVATIONS ARE BASED ON ARBITRARY DATUM.

LOOP:
 SEGMENT:
 SITE ADDRESS:

TITLE: HOUSEHOLD FINANCE

CONTRACT NO:	XX
DRAWING NO:	044
DATE DRAWN:	09/29/00
SCALE:	1" = 100'
DRAWN BY:	S.E.
PLOT DATE:	09/29/00
SHEET	44 OF 46

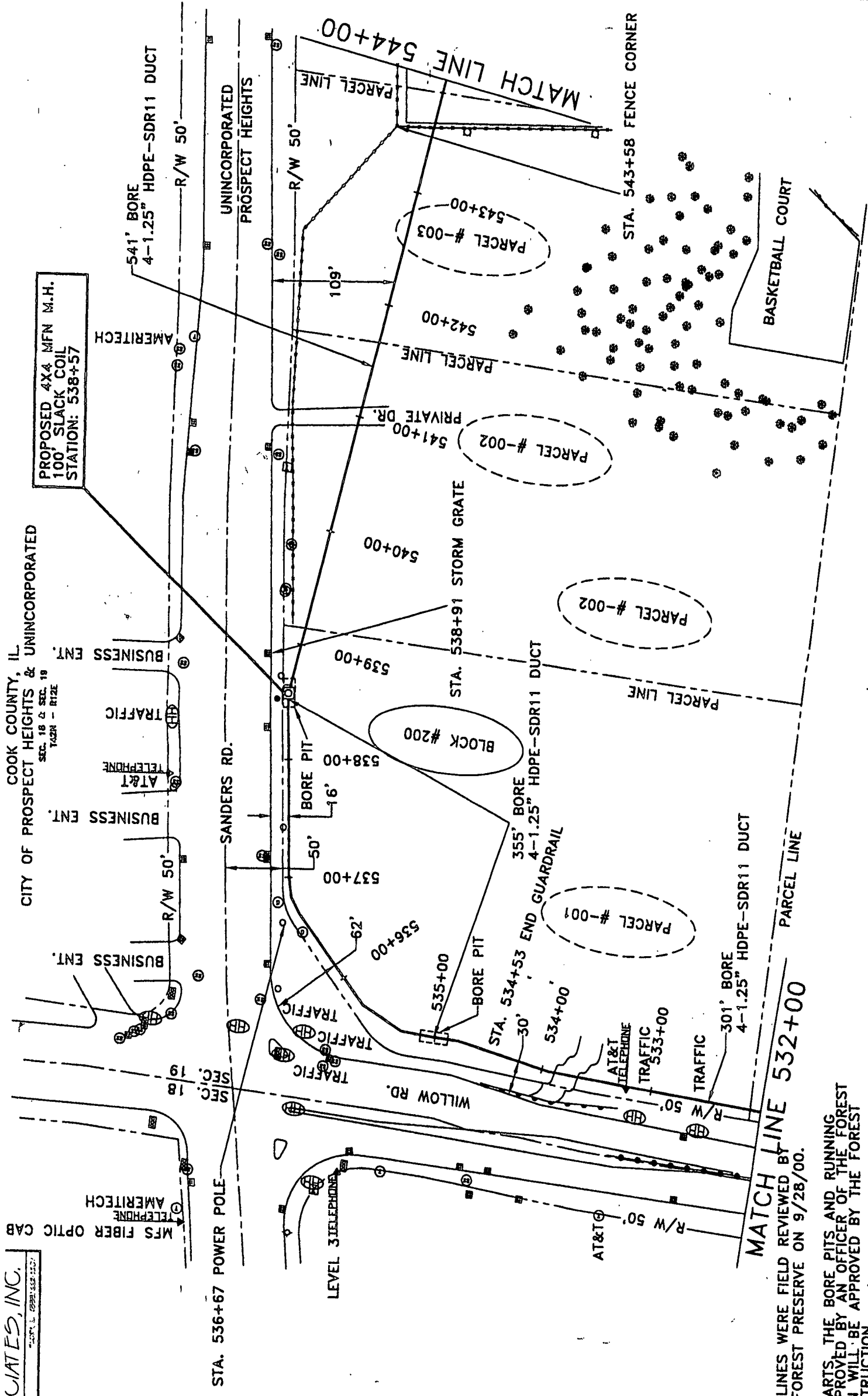
HUNTERS & ASSOCIATES, INC.

COOK COUNTY, IL
CITY OF PROSPECT HEIGHTS & UNINCORPORATED
SEC. 18 & SEC. 19
TOWN - RIZE

1.	7/29/00	REVISED DRAWING
2.		
3.		
4.		
5.		
6.		
7.		
8.		
9.		
10.		
11.		
12.		
13.		
14.		
15.		
16.		
17.		
18.		
19.		
20.		
21.		
22.		
23.		
24.		
25.		
26.		
27.		
28.		
29.		
30.		
31.		
32.		
33.		
34.		
35.		
36.		
37.		
38.		
39.		
40.		
41.		
42.		
43.		
44.		
45.		
46.		
47.		
48.		
49.		
50.		
51.		
52.		
53.		
54.		
55.		
56.		
57.		
58.		
59.		
60.		
61.		
62.		
63.		
64.		
65.		
66.		
67.		
68.		
69.		
70.		
71.		
72.		
73.		
74.		
75.		
76.		
77.		
78.		
79.		
80.		
81.		
82.		
83.		
84.		
85.		
86.		
87.		
88.		
89.		
90.		
91.		
92.		
93.		
94.		
95.		
96.		
97.		
98.		
99.		
100.		

METRO MEDIAL
FIBER NETWORK

HUNTERS & ASSOC. III



NOTES:

1. PROPERTY LINES ARE APPROXIMATE AND ARE SHOWN FOR INFORMATION ONLY.
2. LIMITS OF ROW TO BE DETERMINED PRIOR TO CONSTRUCTION.
3. LOCATIONS OF EXISTING UTILITIES ARE APPROX. AND MUST BE VERIFIED IN THE FIELD BY THE CONTRACTOR.
4. ALL PIPELINE CROSSINGS TO BE HAND EXPOSED PRIOR TO CONSTRUCTION.
5. ELEVATIONS ARE BASED ON ARBITRARY DATUM.

NOTE: BORE PITS AND RUNNING LINES WERE FIELD REVIEWED BY MR. DAN WEBER OF THE FOREST PRESERVE ON 9/28/00.
CAUTION: BEFORE CONSTRUCTION STARTS, THE BORE PITS AND RUNNING LINE STAKING WILL BE APPROVED BY AN OFFICER OF THE FOREST PRESERVE. ALL DEVIATION WILL BE APPROVED BY THE FOREST PRESERVE PRIOR TO CONSTRUCTION.

24" X 24" OPENINGS IN THE ROADWAY MAY BE REQUIRED TO VERIFY SIZE & DEPTH OF EXISTING UTILITIES FOR SAFETY PURPOSES.
SINGLE LANE LANE CLOSURES MAY BE REQUIRED & WILL BE CONDUCTED IN ACCORDANCE WITH THE ILLINOIS MANUAL ON UNIFORM TRAFFIC CONTROL DEVICES.

THE LOCATION OF ALL R/W AND PROPERTY LINES ON THIS DRAWING WERE DETERMINED SOLELY BY USE OF READILY AVAILABLE PLAT MAPS. NO SURVEYS WERE CONDUCTED IN ASCERTAINING R/W LOCATIONS. CONSTRUCTION RESOURCES, INC. AND HUNTERS & ASSOCIATES, INC. CANNOT AND DO NOT WARRANT THE ACCURACY OF THE R/W AND PROPERTY LINES ON THIS DRAWING.

MAT. - ACT. LIST	QUANTITY
FIBER	1300'
TRACK FLOW	0'
OPEN CUT	0'
TRENCH	0'
DIRECTIONAL BORE	1196'
BRIDGE ATTACHMENT	0'
BALLAST DECK	0'
8" B.I.P.	0'
4" HDPE-SDR11	0'
1.25" HDPE-SDR11	4784'
MARKER TAPE	0'
MANHOLE	1
HANDHOLE	0

Ⓛ	FIBER	Ⓛ	STORM DRAIN	Ⓛ	ELECTRIC
Ⓜ	CATCH BASIN	Ⓜ	SANITARY SEWER	Ⓜ	OVER HEAD POWER
Ⓝ	FIRE HYDRANT	Ⓝ	GAS	Ⓝ	CABLE TELEVISION
Ⓞ	POWER BOX	Ⓞ	TELEPHONE	Ⓞ	WATER
Ⓟ	SLACK HANDHOLE	Ⓟ	SIGN		
Ⓠ	4 X 4 MANHOLE	Ⓠ	MAILBOX		
Ⓡ	POLE	Ⓡ	TREE		
Ⓢ	STREET LIGHT	Ⓢ	PEDESTAL		

TITLE: HOUSEHOLD FINANCE	
CONTRACT NO:	XX
DRAWING NO:	045
DATE DRAWN:	09/29/00
SCALE:	1" = 100'
PLOT DATE:	09/29/00
DRAWN BY:	S.E.
SHEET	5 OF 46