

# Forest Preserve District of Cook County

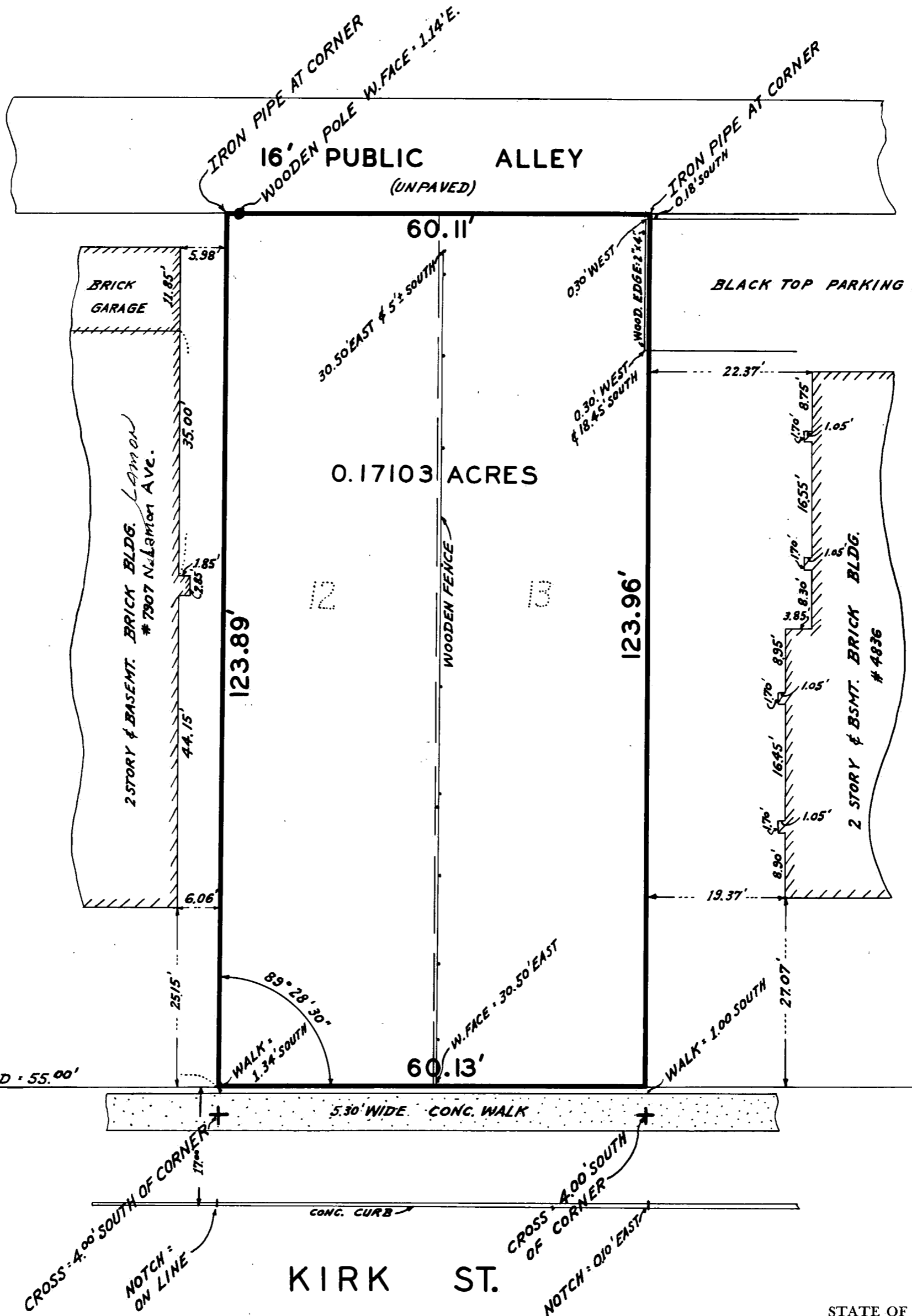


## PLAT of SURVEY

Lot 12 and 13 in Block 4, in Superior Court Commissioners Sub<sup>d</sup> of the E. 10 1/2 Acres (except R.R.) of Lot 1 in County Clerks Division of the N.E. 1/4 of Sec. 28, T. 41 N., R. 13 E. of the 3<sup>rd</sup> P.M., in Cook County, Illinois.



N. LAMON AVE.



976

Scale..... 1 INCH = 15 FEET  
 District.....  
 Bought From.....  
 Book..... Page.....  
 Drawn by..... PAUL LOTZ  
 Checked by.....  
 Approved.....  
 Supervisor.

KIRK ST.

STATE OF ILLINOIS, }  
 COUNTY OF COOK } ss.  
 THE FOREST PRESERVE DISTRICT of Cook County hereby certifies that it has surveyed the property described above, and that the plat above drawn is a correct representation of said survey.  
 Chicago, JAN. 9<sup>th</sup> A. D. 19 63.  
 Chief Engineer.

976

10099 976