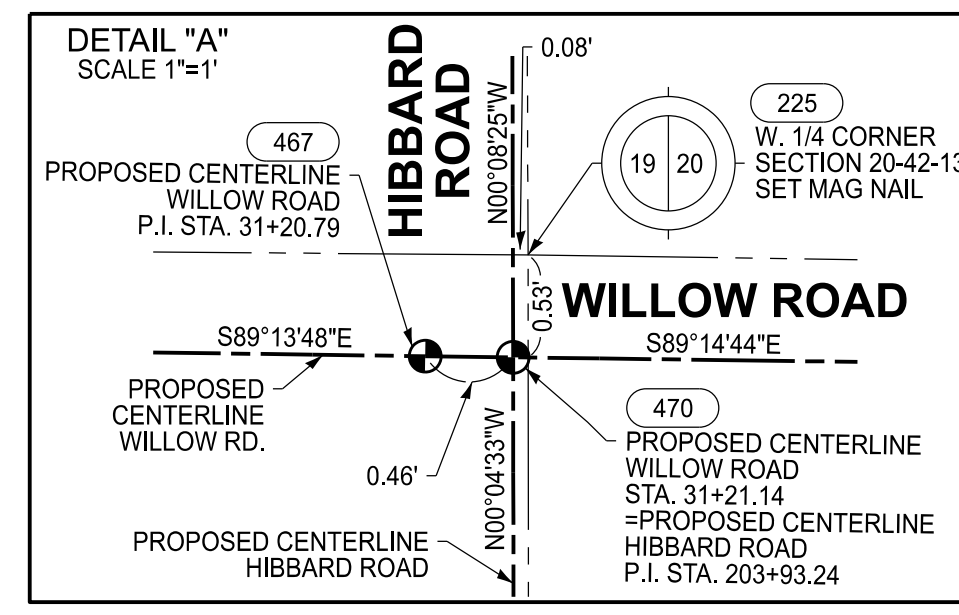


**PART OF THE E. 1/2 OF SECTION 19 & PART OF THE W. 1/2 OF SECTION 20, ALL IN TWP. 42 N., R. 13 E. OF THE 3RD. P.M., IN COOK COUNTY, ILLINOIS.**

PARCEL NUMBER	TOTAL HOLDINGS ACRES	FEE SIMPLE ACQUISITION						REMAINDER ACRES	EASEMENT AREA		PARCEL INDEX NUMBER
		GROSS		PREVIOUSLY DEDICATED		NET			ACRES	SQ FT	
		ACRES	SQ FT	ACRES	SQ FT	ACRES	SQ FT				
018205001	0.758						0.758	0.073	3,172	05-19-406-021	
018205002	1.929	0.002	104			0.002	104	1.927		05-20-119-015	
018205003	0.302	0.004	180			0.004	180	0.298		05-20-300-037	



SECTION CORNER COORDINATE TABLE  
COORDINATES SHOWN HEREON ARE REFERENCED TO THE ILLINOIS STATE PLANE COORDINATE SYSTEM, EAST ZONE, NAD83 (2011)

PT. NO.	NORTHING	EASTING
205	1,982,648.6330	1,142,140.7310
305	1,977,362.1230	1,142,152.7400
313	1,979,973.2414	1,144,795.4338
398	1,980,032.2009	1,139,509.2494

SPACE RESERVED FOR RECORDING OFFICER

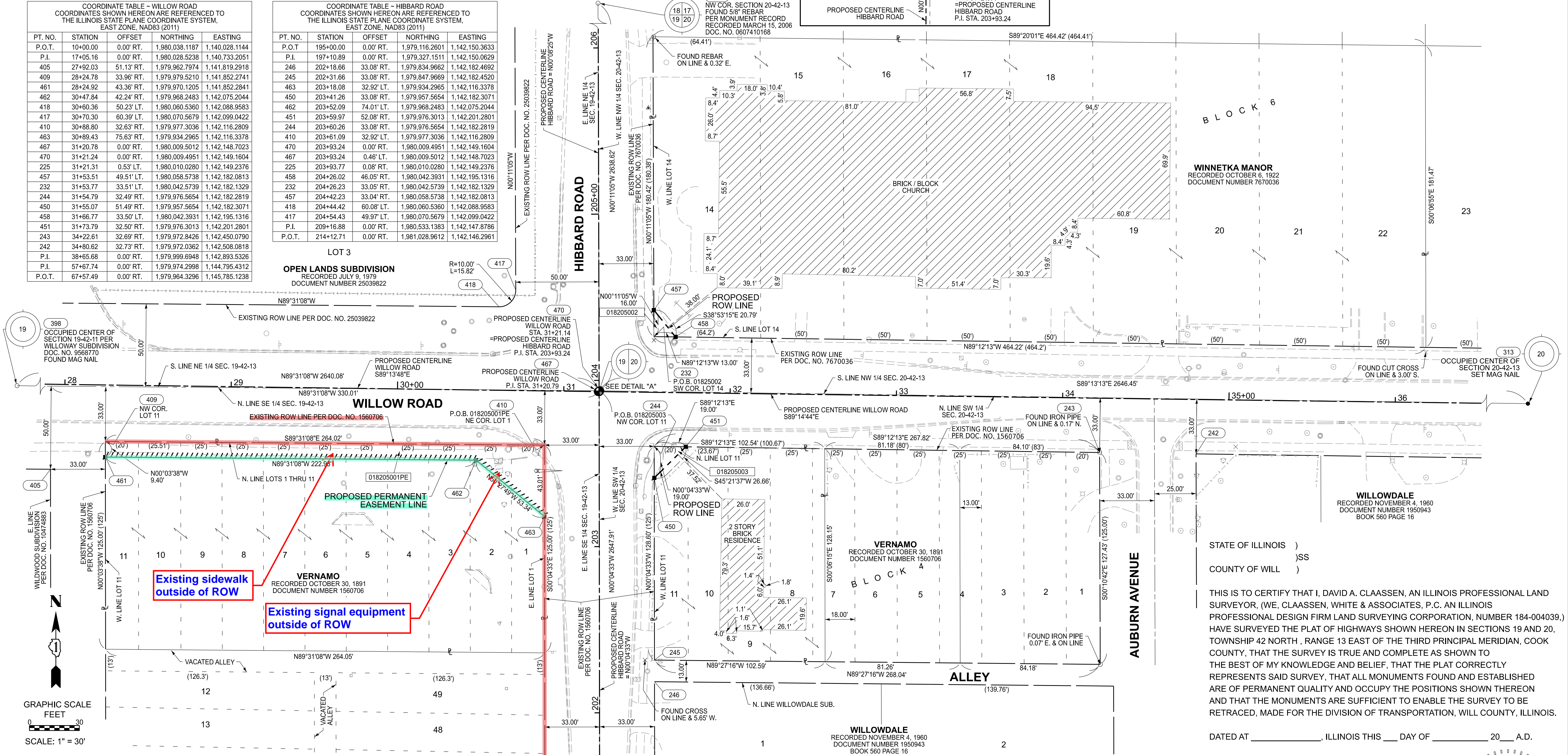
COORDINATE TABLE - WILLOW ROAD  
COORDINATES SHOWN HEREON ARE REFERENCED TO THE ILLINOIS STATE PLANE COORDINATE SYSTEM, EAST ZONE, NAD83 (2011)

PT. NO.	STATION	OFFSET	NORTHING	EASTING
P.O.T.	10+00.00	0.00' RT.	1,980,038.1187	1,140,028.1144
P.I.	17+05.16	0.00' RT.	1,980,028.5238	1,140,733.2051
405	27+92.03	51.13' RT.	1,979,962.7974	1,141,819.2918
409	28+24.78	33.96' RT.	1,979,979.5210	1,141,852.2741
461	28+24.92	43.36' RT.	1,979,970.1205	1,141,852.2841
462	30+47.84	42.24' RT.	1,979,968.2483	1,142,075.2044
418	30+60.36	50.23' LT.	1,980,060.5360	1,142,088.9583
417	30+70.30	60.39' LT.	1,980,070.5679	1,142,089.0422
410	30+88.80	32.63' RT.	1,979,977.3036	1,142,116.2809
463	30+89.43	75.63' RT.	1,979,934.2965	1,142,116.3378
467	31+20.78	0.00' RT.	1,980,009.5012	1,142,148.7023
470	31+21.24	0.00' RT.	1,980,009.4951	1,142,149.1604
225	31+21.31	0.53' LT.	1,980,010.0280	1,142,149.2376
457	31+53.51	49.51' LT.	1,980,058.5738	1,142,182.0813
232	31+53.77	33.51' LT.	1,980,042.5739	1,142,182.1329
244	31+54.79	32.49' RT.	1,979,976.5654	1,142,182.2819
450	31+55.07	51.49' RT.	1,979,957.5654	1,142,182.3071
458	31+66.77	33.50' LT.	1,980,042.3931	1,142,195.1316
451	31+73.79	32.50' RT.	1,979,976.3013	1,142,201.2801
243	34+22.61	32.69' RT.	1,979,972.8426	1,142,450.0790
242	34+80.62	32.73' RT.	1,979,972.0362	1,142,508.0818
P.I.	38+65.68	0.00' RT.	1,979,999.6948	1,142,893.5326
P.I.	57+67.74	0.00' RT.	1,979,974.2998	1,144,795.4312
P.O.T.	67+57.49	0.00' RT.	1,979,964.3296	1,145,785.1238

COORDINATE TABLE - HIBBARD ROAD  
COORDINATES SHOWN HEREON ARE REFERENCED TO THE ILLINOIS STATE PLANE COORDINATE SYSTEM, EAST ZONE, NAD83 (2011)

PT. NO.	STATION	OFFSET	NORTHING	EASTING
P.O.T.	195+00.00	0.00' RT.	1,979,116.2601	1,142,150.3633
P.I.	197+10.89	0.00' RT.	1,979,327.1511	1,142,150.0829
246	202+18.66	33.08' RT.	1,979,834.9662	1,142,182.4692
245	202+31.66	33.08' RT.	1,979,847.9669	1,142,182.4520
463	203+18.08	32.92' LT.	1,979,934.2965	1,142,116.3378
450	203+41.26	33.08' RT.	1,979,957.5654	1,142,182.3071
462	203+52.09	74.01' LT.	1,979,968.2483	1,142,075.2044
451	203+59.97	52.08' RT.	1,979,976.3013	1,142,201.2801
244	203+60.26	33.08' RT.	1,979,976.5654	1,142,182.2819
410	203+61.09	32.92' LT.	1,979,977.3036	1,142,116.2809
470	203+93.24	0.00' RT.	1,980,009.4951	1,142,149.1604
467	203+93.24	0.46' LT.	1,980,009.5012	1,142,148.7023
225	203+93.77	0.08' RT.	1,980,010.0280	1,142,149.2376
458	204+26.02	46.05' RT.	1,980,042.3931	1,142,195.1316
232	204+26.23	33.05' RT.	1,980,042.5739	1,142,182.1329
457	204+42.23	33.04' RT.	1,980,058.5738	1,142,182.0813
418	204+44.42	60.08' LT.	1,980,060.5360	1,142,088.9583
417	204+54.43	49.97' LT.	1,980,070.5679	1,142,099.0422
P.I.	209+16.88	0.00' RT.	1,980,533.1383	1,142,147.8786
P.O.T.	214+12.71	0.00' RT.	1,981,028.9612	1,142,146.2961

LOT 3  
OPEN LANDS SUBDIVISION  
RECORDED JULY 9, 1979  
DOCUMENT NUMBER 25039822



STATE OF ILLINOIS )  
COUNTY OF WILL )SS

THIS IS TO CERTIFY THAT I, DAVID A. CLAASSEN, AN ILLINOIS PROFESSIONAL LAND SURVEYOR, (WE, CLAASSEN, WHITE & ASSOCIATES, P.C. AN ILLINOIS PROFESSIONAL DESIGN FIRM LAND SURVEYING CORPORATION, NUMBER 184-004039.) HAVE SURVEYED THE PLAT OF HIGHWAYS SHOWN HEREON IN SECTIONS 19 AND 20, TOWNSHIP 42 NORTH, RANGE 13 EAST OF THE THIRD PRINCIPAL MERIDIAN, COOK COUNTY, THAT THE SURVEY IS TRUE AND COMPLETE AS SHOWN TO THE BEST OF MY KNOWLEDGE AND BELIEF, THAT THE PLAT CORRECTLY REPRESENTS SAID SURVEY, THAT ALL MONUMENTS FOUND AND ESTABLISHED ARE OF PERMANENT QUALITY AND OCCUPY THE POSITIONS SHOWN THEREON AND THAT THE MONUMENTS ARE SUFFICIENT TO ENABLE THE SURVEY TO BE RETRACED, MADE FOR THE DIVISION OF TRANSPORTATION, WILL COUNTY, ILLINOIS.

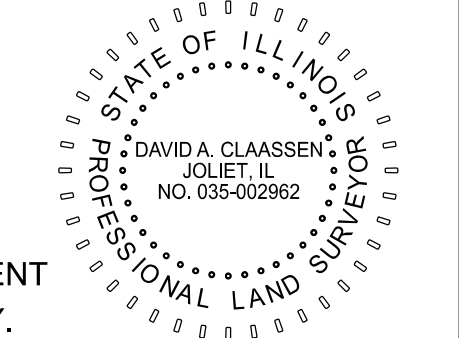
DATED AT \_\_\_\_\_, ILLINOIS THIS \_\_\_\_ DAY OF \_\_\_\_\_ 20\_\_ A.D.

**PREPARED BY:**  
CWA SURVEY  
**CLAASSEN, WHITE & ASSOCIATES, P.C.**  
LAND SURVEYORS  
121 AIRPORT DRIVE, UNIT 1, JOLIET, ILLINOIS 60431  
(815) 744-3720 clausenwhite@cwasurevey.com  
CWA Job #7673

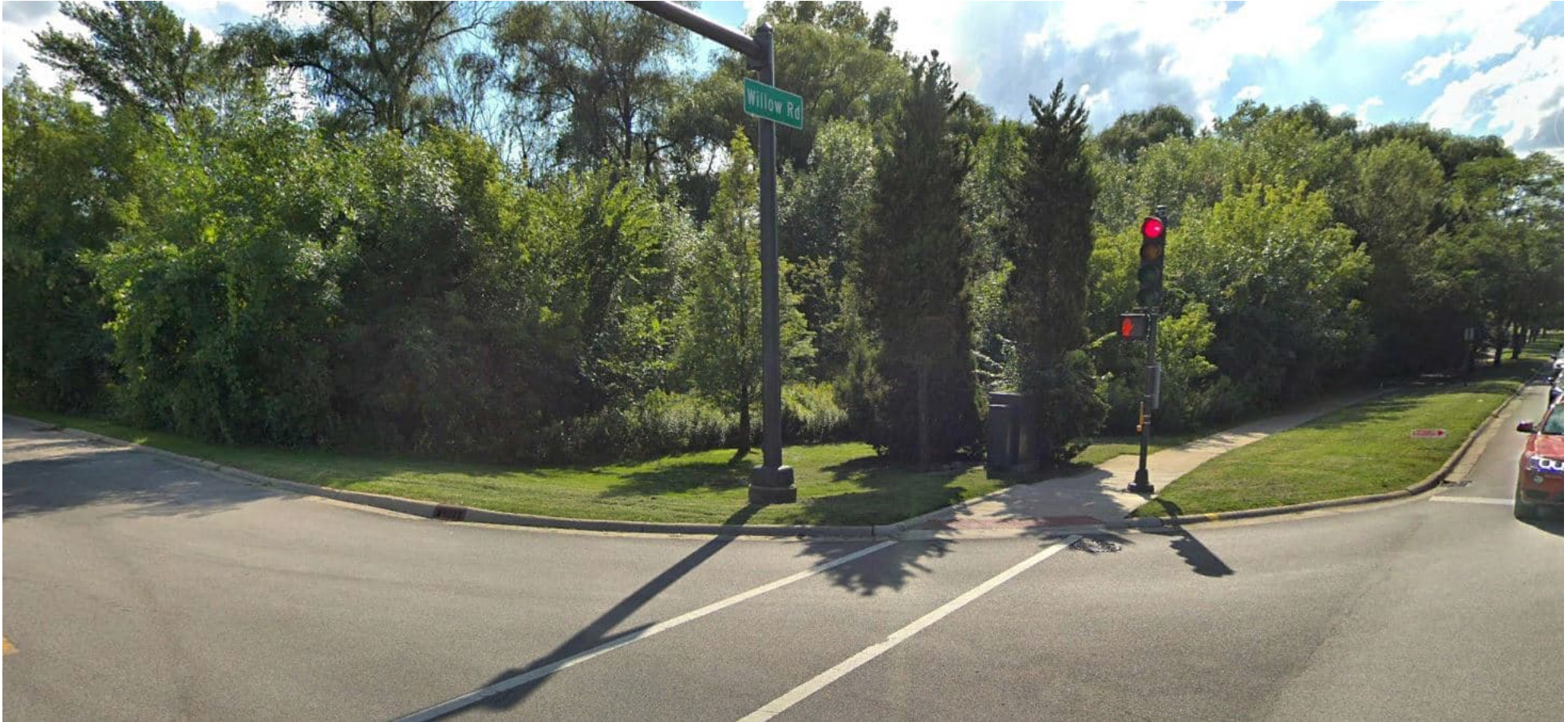
**VILLAGE OF WINNETKA**  
ILLINOIS DEPARTMENT OF TRANSPORTATION  
PLAT OF HIGHWAYS

F.A. RTE.:	SECTION:	COUNTY: COOK	JOB NO.: R-90-018-25
	STA 27+92.03 TO STA 36+00	ROUTE: WILLOW ROAD	
		SHEET NO. 3 OF 3 SHEETS	

PLOTTED BY: = JM	FIELD	09/04/2025	REVISED	-
FIELD WORK COMPLETED = 09/04/2025	DRAWN	JMH	REVISED	-
PLOT SCALE = 1"=30'	CHECKED	KAG	REVISED	-
PLOT DATE = 09/08/2025	DATE	09/05/2025	REVISED	-



MODEL: SHEET  
FILE NAME: D:\Projects\1873 Strand Willow Road\Microstation\_CADD\27-36-00-13-25.dwg



Willow Road and Hibbard Road Intersection Looking SW (Pre-2023)



Willow Road and Hibbard Road Intersection Looking SW (Post-2024)



Hibbard Road Looking NW Towards Willow Road (Post-2024)