

F.A.P. RTE.	SECTION	COUNTY	TOTAL SHEETS	SHEET NO.
0375	19-00135-00-BT	COOK	1	47
		ILLINOIS	CONTRACT NO. 61H81	

STATE OF ILLINOIS
DEPARTMENT OF TRANSPORTATION
**PROPOSED
HIGHWAY PLANS**

FOR INDEX OF SHEETS, SEE SHEET NO. 2

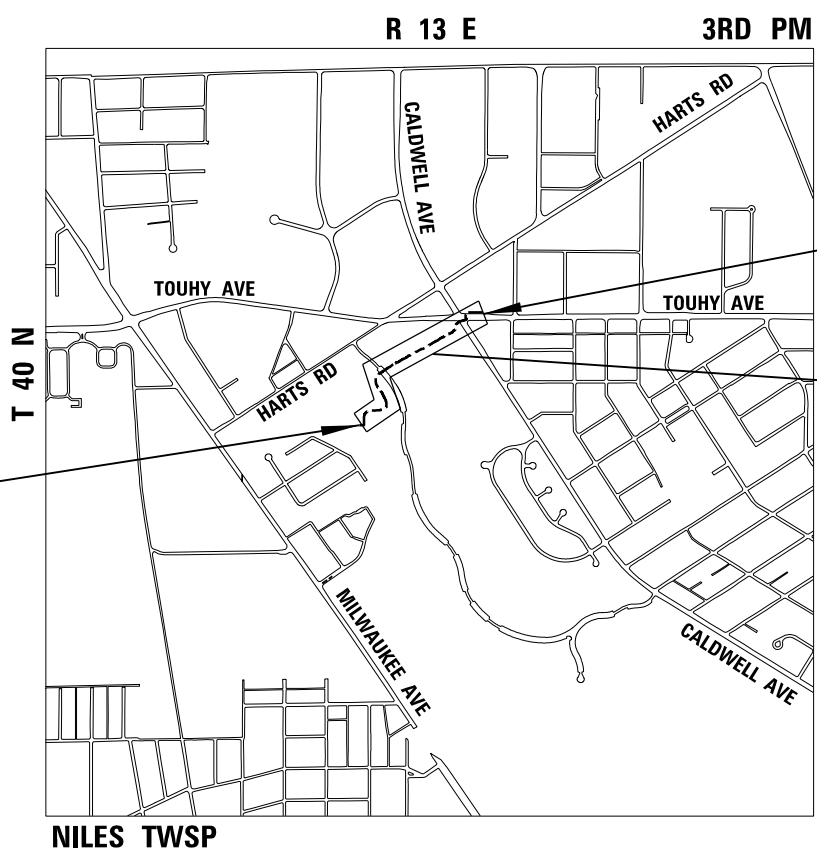
**FAP ROUTE 0375 (TOUHY AVENUE)
NEW MULTI-USE PATH
SECTION 19-00135-00-BT
PROJECT 0G34(073)
VILLAGE OF NILES
COOK COUNTY**



DESIGN DESIGNATION:
TOUHY AVENUE (OTHER PRINCIPAL ARTERIAL)
2018 AADT = 30,400
DESIGN SPEED = 40 MPH
POSTED SPEED = 35 MPH

CALDWELL AVENUE (OTHER PRINCIPAL ARTERIAL)
2018 AADT = 16,700
DESIGN SPEED = 40 MPH
POSTED SPEED = 40 MPH

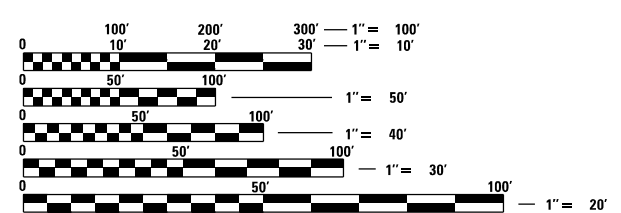
C-91-124-22



**END PROJECT
STA. 29 + 31.24**

PROJECT LOCATION

**BEGIN PROJECT
STA. 10 + 22.70**



FULL SIZE PLANS HAVE BEEN PREPARED USING STANDARD ENGINEERING SCALES. REDUCED SIZED PLANS WILL NOT CONFORM TO STANDARD SCALES. IN MAKING MEASUREMENTS ON REDUCED PLANS, THE ABOVE SCALES MAY BE USED.

J.U.L.I.E.
JOINT UTILITY LOCATION INFORMATION FOR EXCAVATION
1-800-892-0123
OR 811

PROJECT MANAGER: LEE M. FELL, PE (847) 823-0500

CHRISTOPHER B. BURKE ENGINEERING, LTD.
9575 W. Higgins Road, Suite 600
Rosemont, Illinois 60018
(847) 823-0500

CONTRACT NO. 61H81

GROSS LENGTH = 2055.00 FT. = 0.389 MILE
NET LENGTH = 2055.00 FT. = 0.389 MILE

**LOCATION MAP
NOT TO SCALE**

STATE OF ILLINOIS DEPARTMENT OF TRANSPORTATION	
APPROVED <i>Thomas Powers</i> 07/19/2022	VILLAGE ENGINEER VILLAGE OF NILES
APPROVED <i>Chris Slattery</i> 7/26/22	FOREST PRESERVE DISTRICT OF COOK COUNTY
PASSED _____ 20 _____	DISTRICT 1 ENGINEER OF LOCAL ROADS AND STREETS
RELEASING FOR BID BASED ON LIMITED REVIEW _____ 20 _____	REGIONAL ENGINEER

**PRINTED BY THE AUTHORITY
OF THE STATE OF ILLINOIS**

FEDERAL AID ENGINEER: CARMEN E. RAMOS, P.E., SCHAUMBURG, IL

MODEL: D:\6181
 FILE NAME: N190072\CHIBR\190072.dwg

CB CHRISTOPHER B. BURKE ENGINEERING, LTD.
 9775 W. Higgins Road, Suite 600
 Rosemont, Illinois 60018
 (847) 823-0500

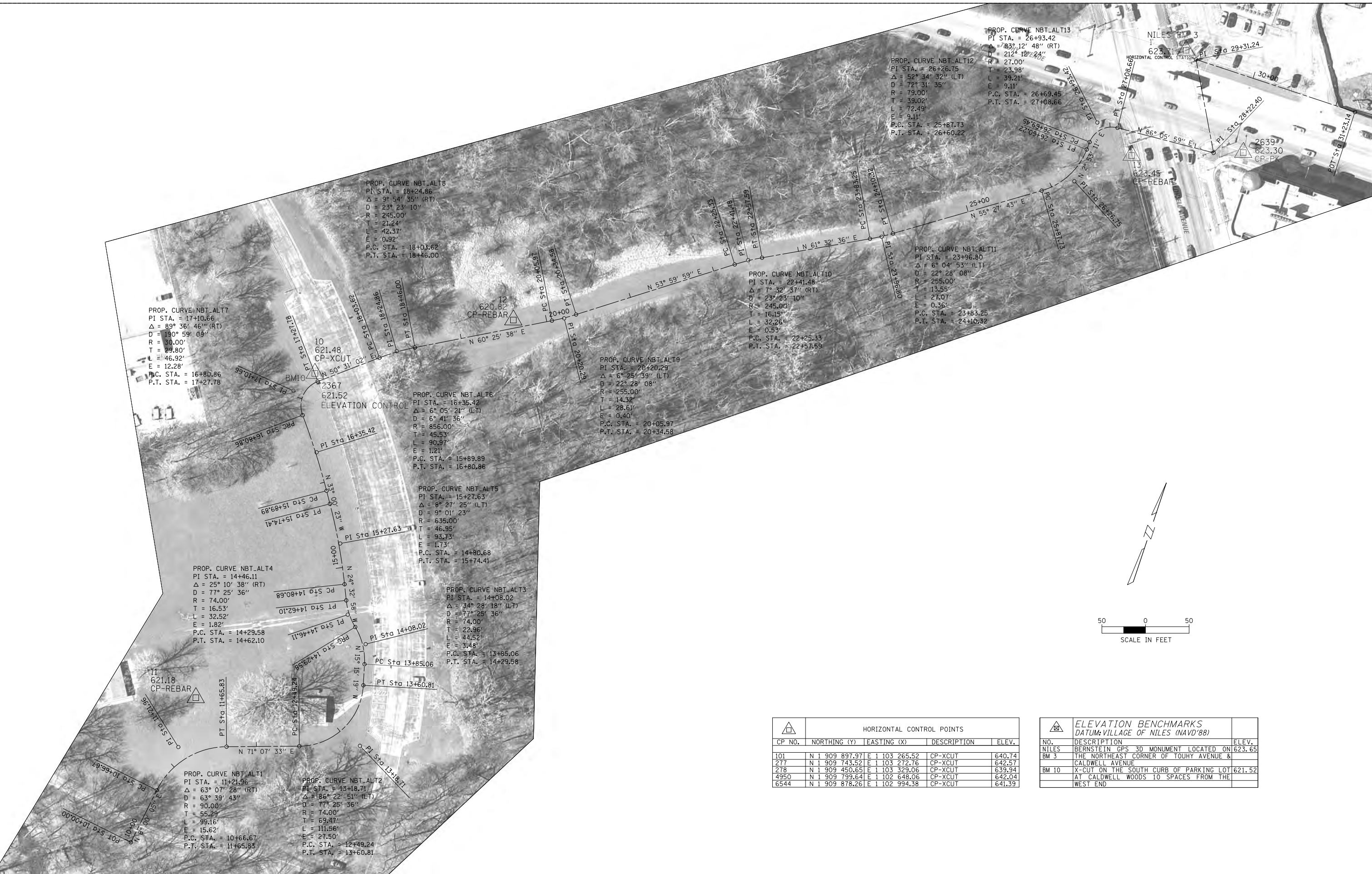
USER NAME = docconnell	DESIGNED - DOC	REVISED -
PLOT SCALE = 50'	CHECKED - LMF	REVISED -
PLOT DATE = 7/25/2022	DATE - 7/25/2022	REVISED -

**STATE OF ILLINOIS
 DEPARTMENT OF TRANSPORTATION**

**NORTH BRANCH TRAIL CONNECTION
 ALIGNMENT, TIES, AND BENCHMARKS**

SCALE: SHEET OF SHEETS STA. TO STA.

F.A.P. RTE.	SECTION	COUNTY	TOTAL SHEETS	SHEET NO.
0375	19-00135-00-BT	COOK	45	9
CONTRACT NO. 61H81				
ILLINOIS FED. AID PROJECT				

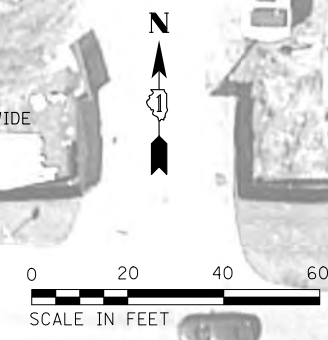
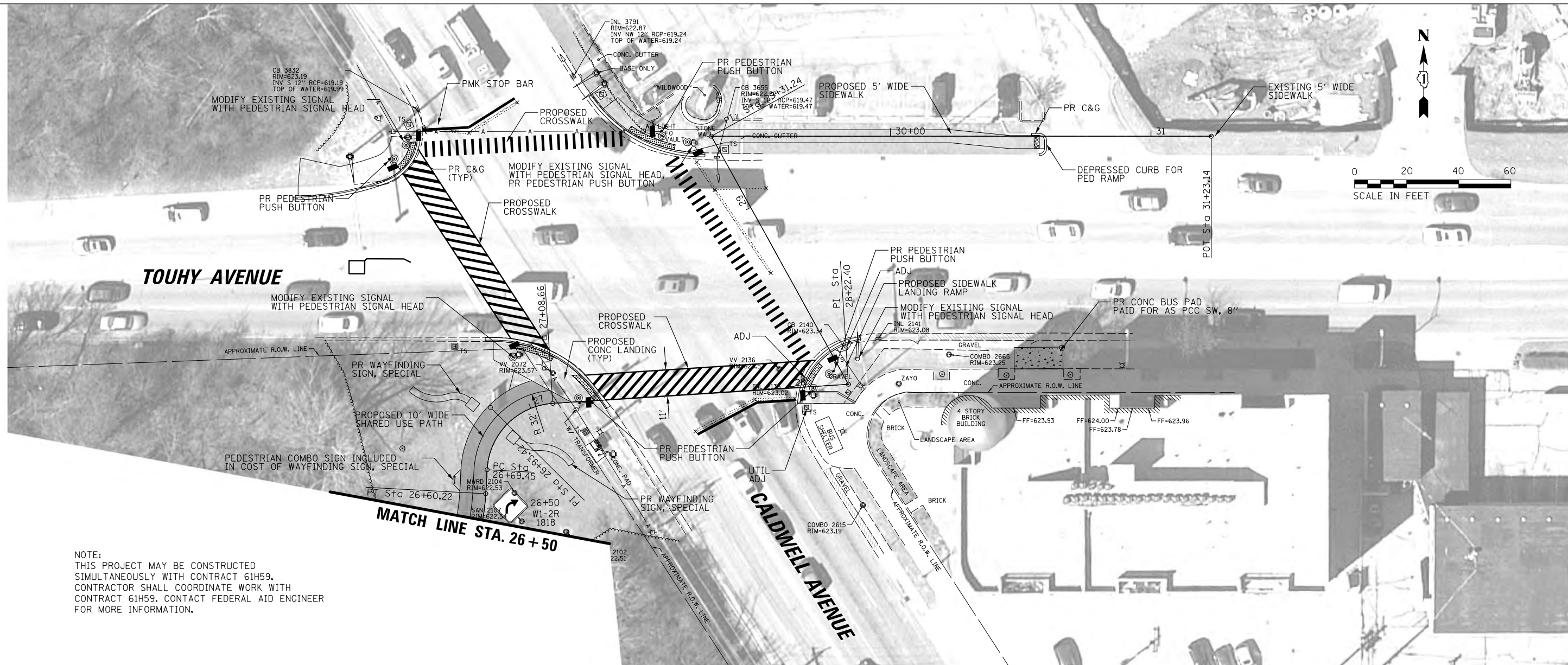


HORIZONTAL CONTROL POINTS				
CP NO.	NORTHING (Y)	EASTING (X)	DESCRIPTION	ELEV.
101	N 1 909 897.97	E 1 103 265.52	CP-XCUT	640.74
277	N 1 909 743.52	E 1 103 272.76	CP-XCUT	642.57
278	N 1 909 450.65	E 1 103 329.06	CP-XCUT	639.94
4950	N 1 909 799.64	E 1 102 648.06	CP-XCUT	642.04
6544	N 1 909 878.26	E 1 102 994.38	CP-XCUT	641.39

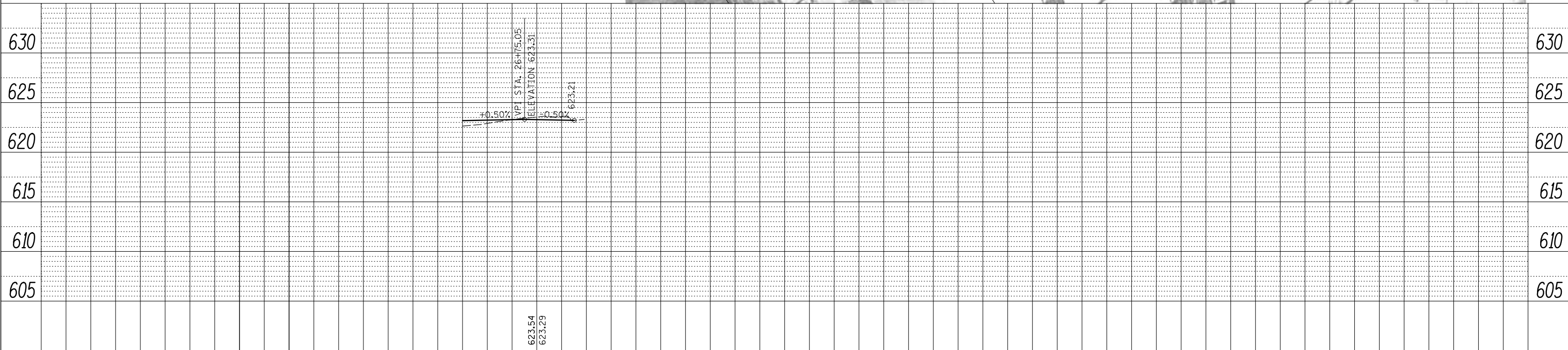
ELEVATION BENCHMARKS		
DATUM: VILLAGE OF NILES (NAVD'88)		
NO.	DESCRIPTION	ELEV.
NILES	BERNSTEIN GPS 3D MONUMENT LOCATED ON THE NORTHEAST CORNER OF TOUHY AVENUE & CALDWELL AVENUE	623.65
BM 10	X-CUT ON THE SOUTH CURB OF PARKING LOT AT CALDWELL WOODS 10 SPACES FROM THE WEST END	621.52

DATE	
BY	
PLAN	
SURVEYED	
PLOTTED	
ALIGNED	
CHECKED	
NO. _____	
NOTE BOOK	
NO. _____	
CADD FILE NAME	

DATE	
BY	
PROFILE	
SURVEYED	
PLOTTED	
GRADES CHECKED	
STRUCTURE NOTATIONS CHECKED	
NO. _____	
NOTE BOOK	
NO. _____	



NOTE:
 THIS PROJECT MAY BE CONSTRUCTED SIMULTANEOUSLY WITH CONTRACT 61H59. CONTRACTOR SHALL COORDINATE WORK WITH CONTRACT 61H59. CONTACT FEDERAL AID ENGINEER FOR MORE INFORMATION.



MODEL: Default
 FILE NAME: N:\MILES\190072\civil\ppa_190072-04_SHT

CB CHRISTOPHER B. BURKE ENGINEERING, LTD.
 8175 W. Higgins Road, Suite 600
 Rosemont, Illinois 60018
 (847) 623-0550

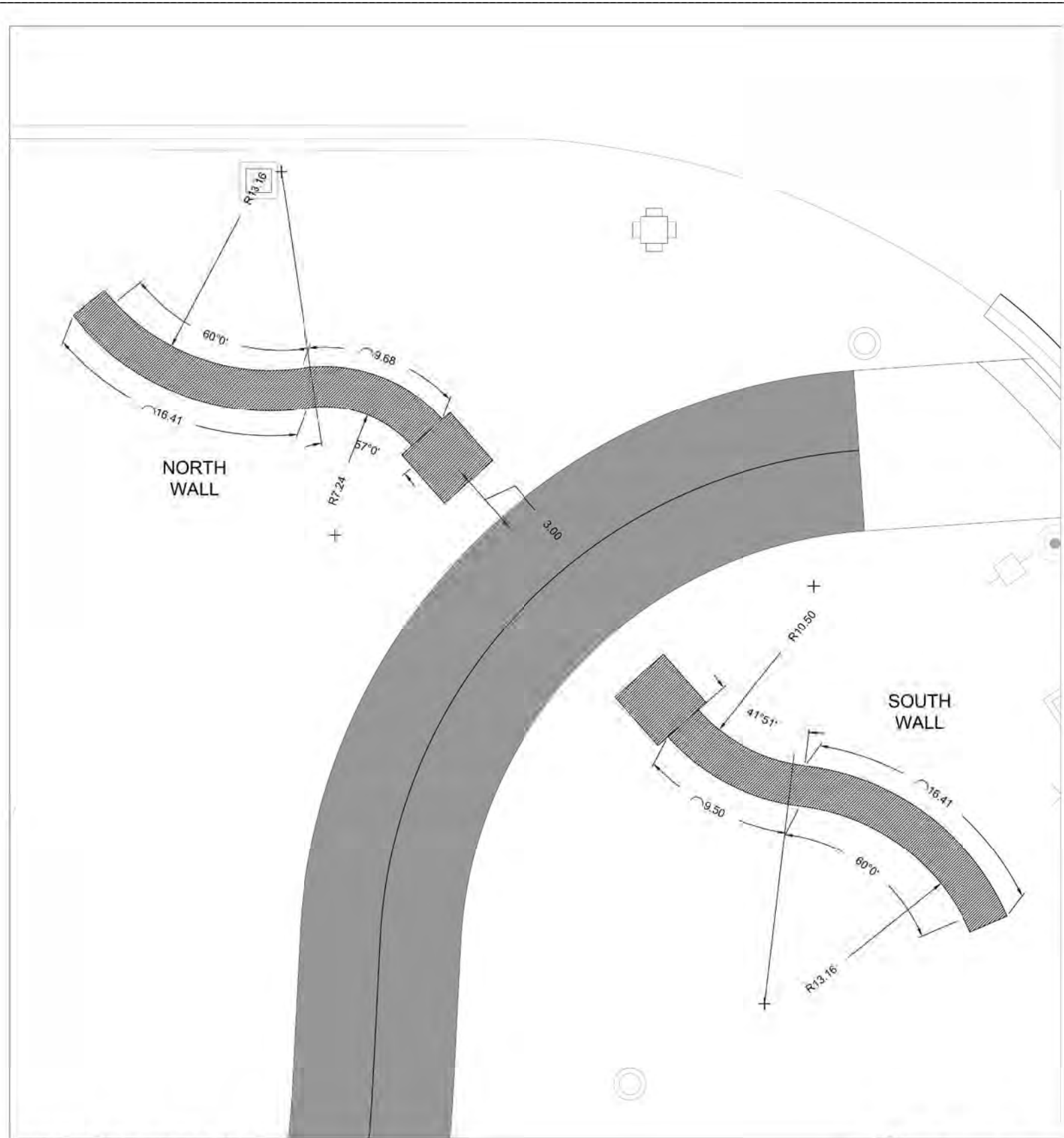
USER NAME = docconnell	DESIGNED - DOC	REVISED -
	DRAWN - DOC	REVISED -
PLOT SCALE = 20'	CHECKED - LMF	REVISED -
PLOT DATE = 7/25/2022	DATE - 7/25/2022	REVISED -

STATE OF ILLINOIS
 DEPARTMENT OF TRANSPORTATION

NORTH BRANCH TRAIL CONNECTION
 PROPOSED PLAN AND PROFILE

SCALE: SHEET OF SHEETS STA. TO STA.

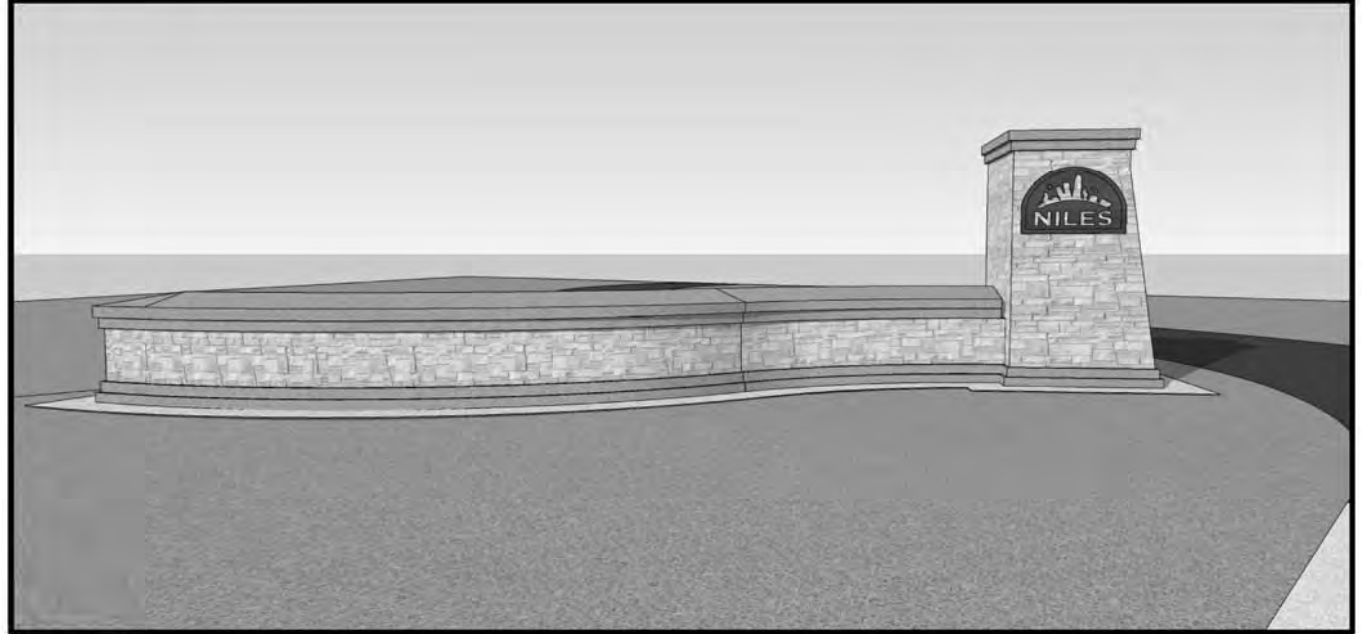
F.A.P. RTE.	SECTION	COUNTY	TOTAL SHEETS	SHEET NO.
0375	19-00135-00-BT	COOK	45	17
			CONTRACT NO. 61H81	
		ILLINOIS	FED. AID PROJECT	



WAYFINDING WALL LAYOUT



NORTH WALL



SOUTH WALL

MODEL: D:\6181\NILES\190072\Civil\SCP-01_190072.dwg

CB CHRISTOPHER B. BURKE ENGINEERING, LTD.
 3073 W. Higgins Road, Suite 600
 Rosemont, Illinois 60018
 (847) 823-0500

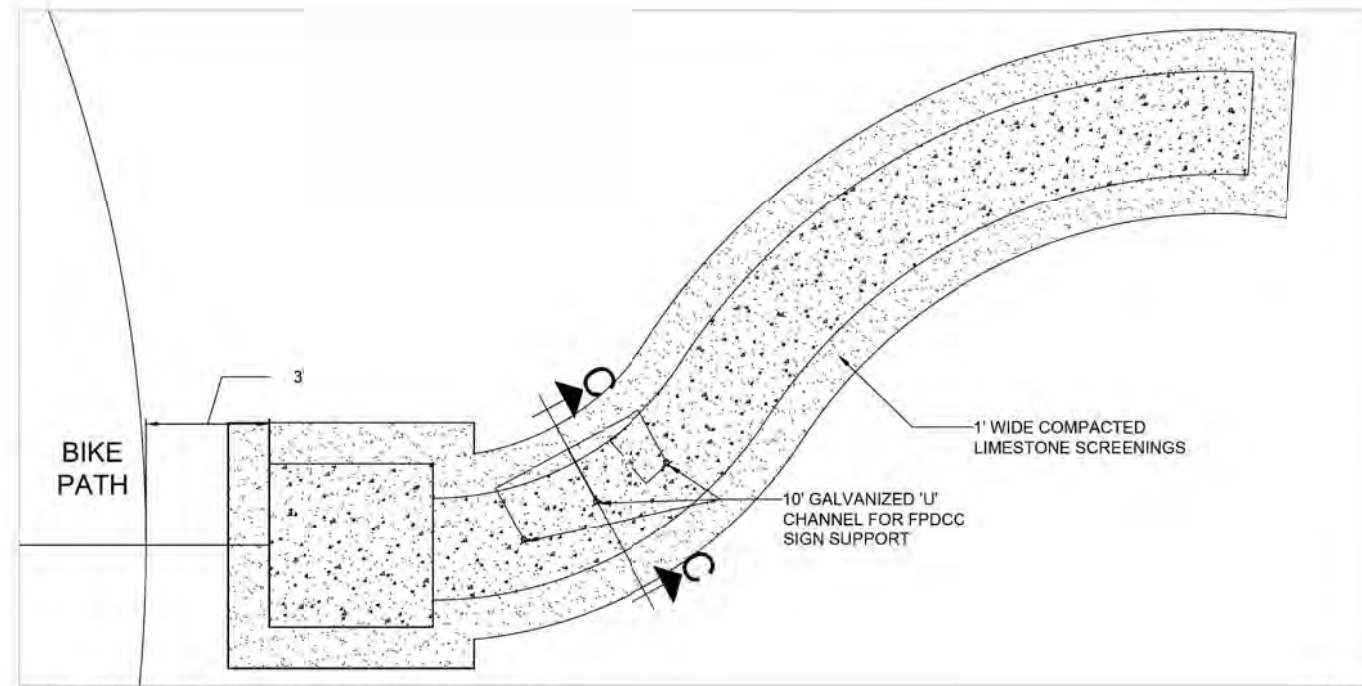
USER NAME = docconnell	DESIGNED - DOC	REVISED -
	DRAWN - DOC	REVISED -
PLOT SCALE = 1"	CHECKED - LMF	REVISED -
PLOT DATE = 7/25/2022	DATE - 7/25/2022	REVISED -

**STATE OF ILLINOIS
 DEPARTMENT OF TRANSPORTATION**

**NORTH BRANCH TRAIL CONNECTION
 PROPOSED WAYFINDING DETAILS**

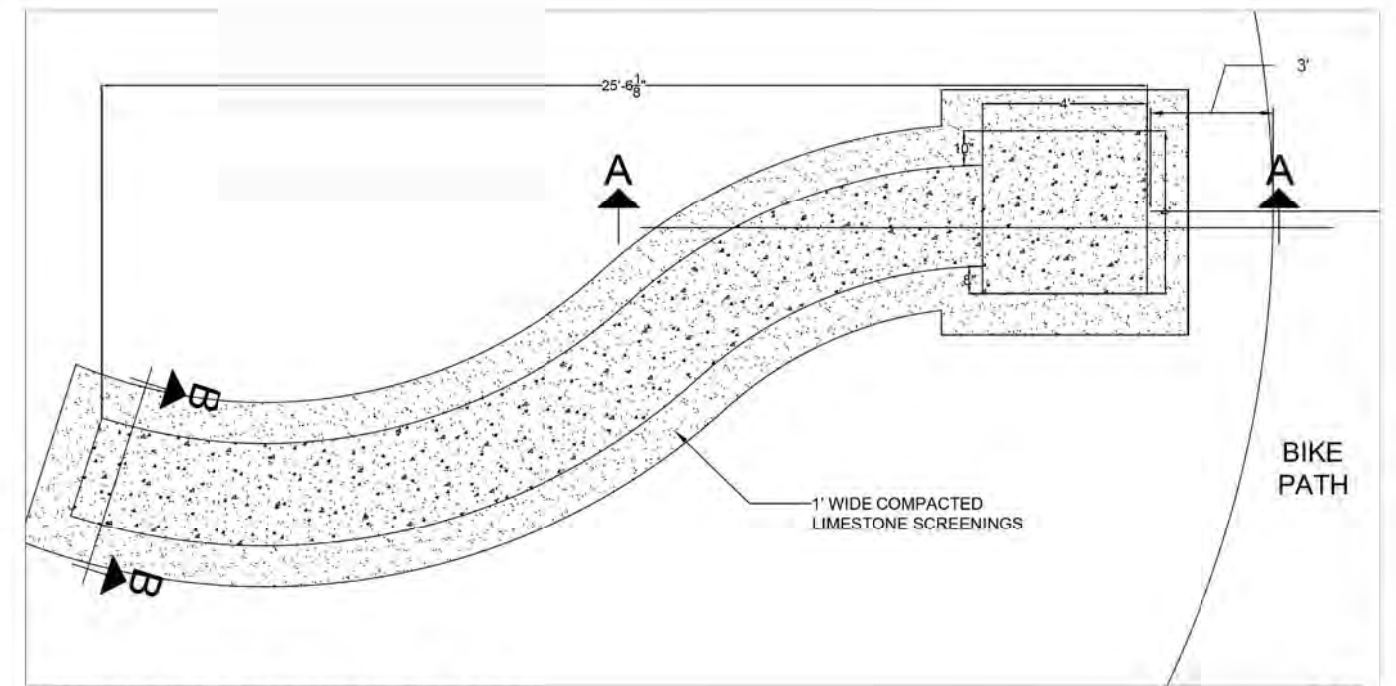
SCALE: SHEET OF SHEETS STA. TO STA.

F.A.P. RTE.	SECTION	COUNTY	TOTAL SHEETS	SHEET NO.
0375	19-00135-00-BT	COOK	45	35
CONTRACT NO. 61H81				
ILLINOIS FED. AID PROJECT				



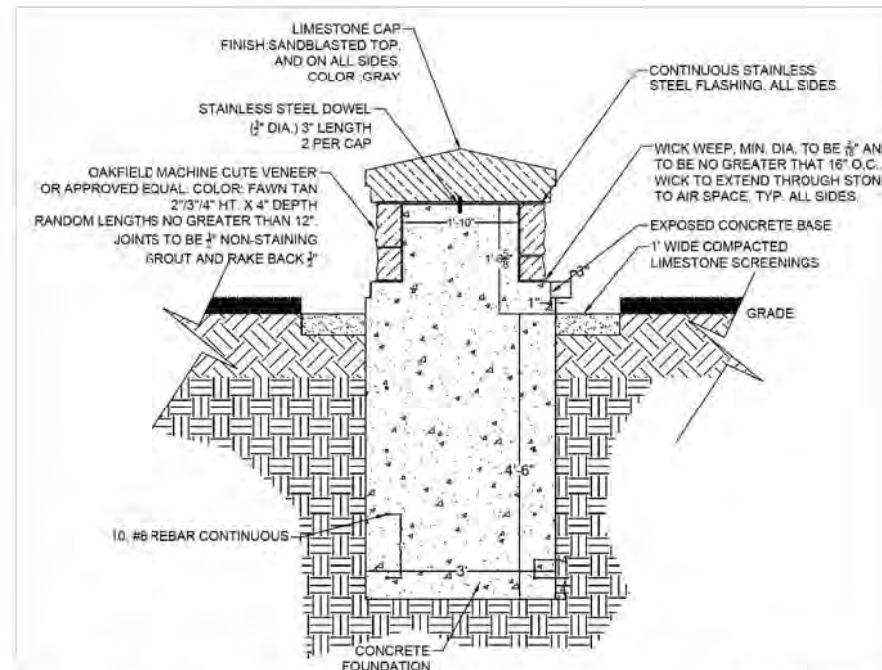
WAYFINDING NORTH WALL PLAN VIEW

NTS



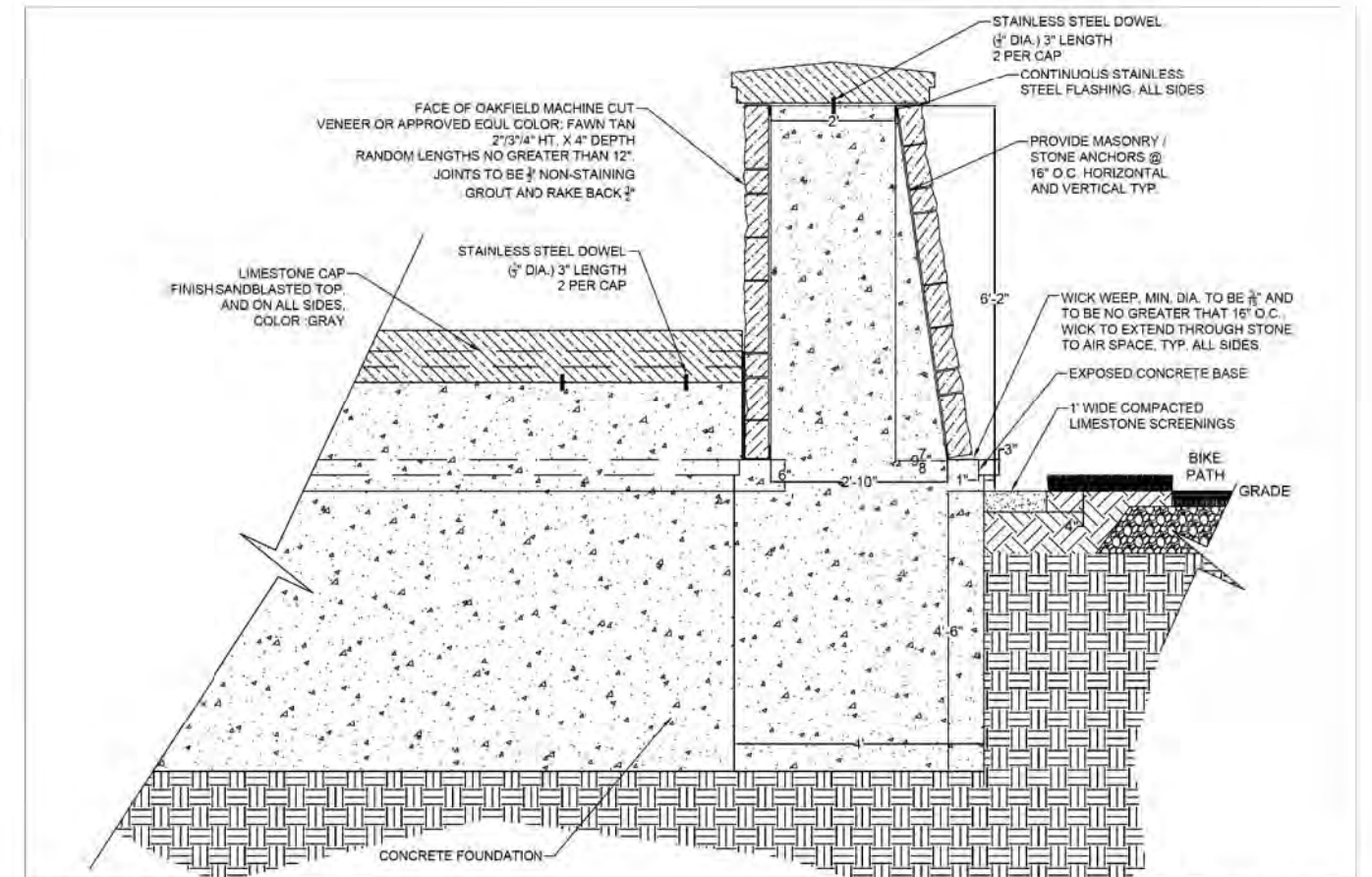
WAYFINDING SOUTH WALL PLAN VIEW

NTS



WAYFINDING SOUTH WALL SECTION 'B'

SCALE 1" = 1 1/2"



WAYFINDING SOUTH WALL SECTION 'A'

SCALE 1" = 1 1/2"

MODEL: D:\6181\FILE NAME: N:\MILES\190072\CHILSCP-02_190072.dwg

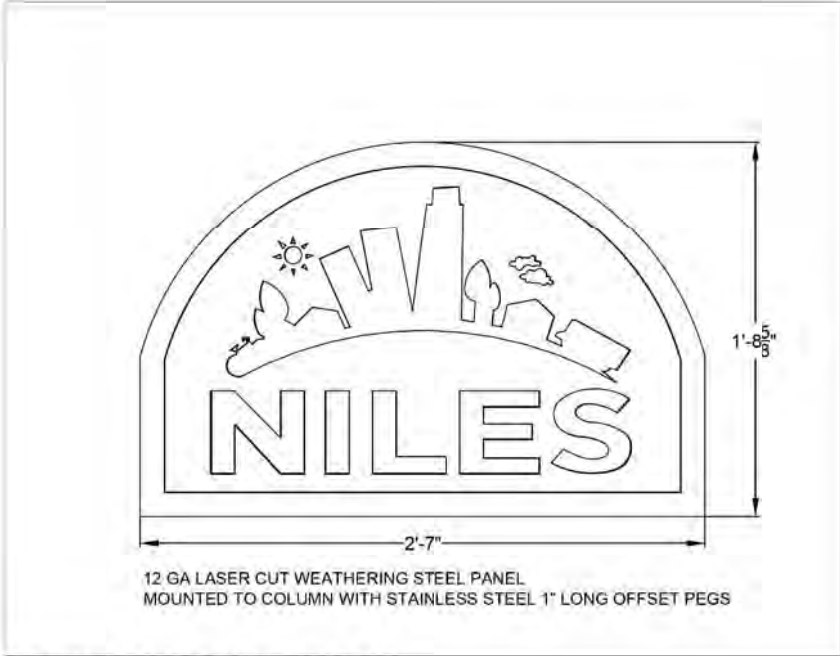
CB CHRISTOPHER B. BURKE ENGINEERING, LTD.
9575 W. Higgins Road, Suite 600
Rosemont, Illinois 60018
(847) 823-0500

USER NAME = doconnell	DESIGNED - DOC	REVISED -
	DRAWN - DOC	REVISED -
PLOT SCALE = 1"	CHECKED - LMF	REVISED -
PLOT DATE = 7/25/2022	DATE - 7/25/2022	REVISED -

STATE OF ILLINOIS
DEPARTMENT OF TRANSPORTATION

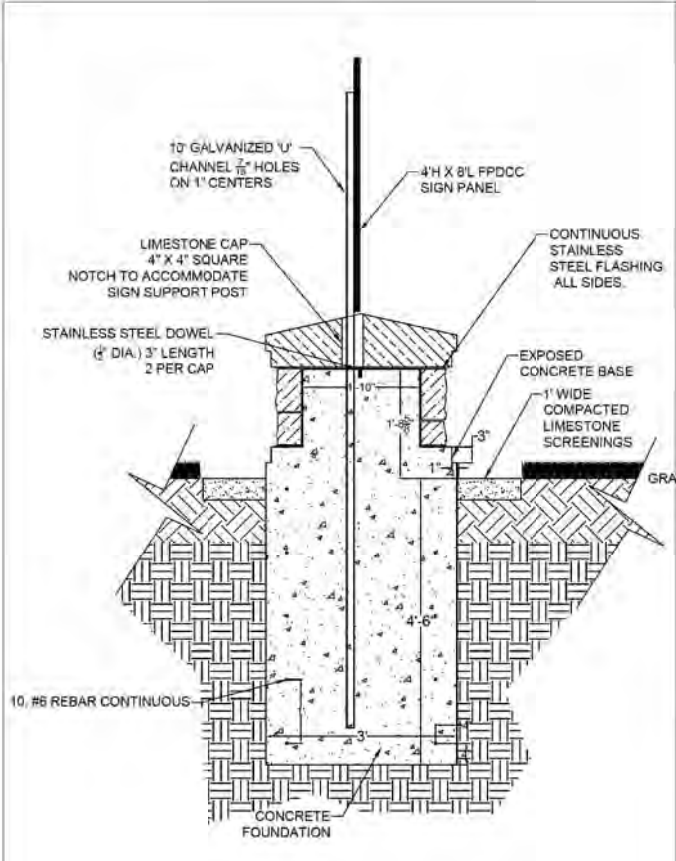
NORTH BRANCH TRAIL CONNECTION			
PROPOSED WAYFINDING DETAILS			
SCALE: _____	SHEET ____ OF ____ SHEETS	STA. _____ TO STA. _____	

F.A.P. RTE.	SECTION	COUNTY	TOTAL SHEETS	SHEET NO.
0375	19-00135-00-BT	COOK	45	36
CONTRACT NO. 61H81				
ILLINOIS FED. AID PROJECT				

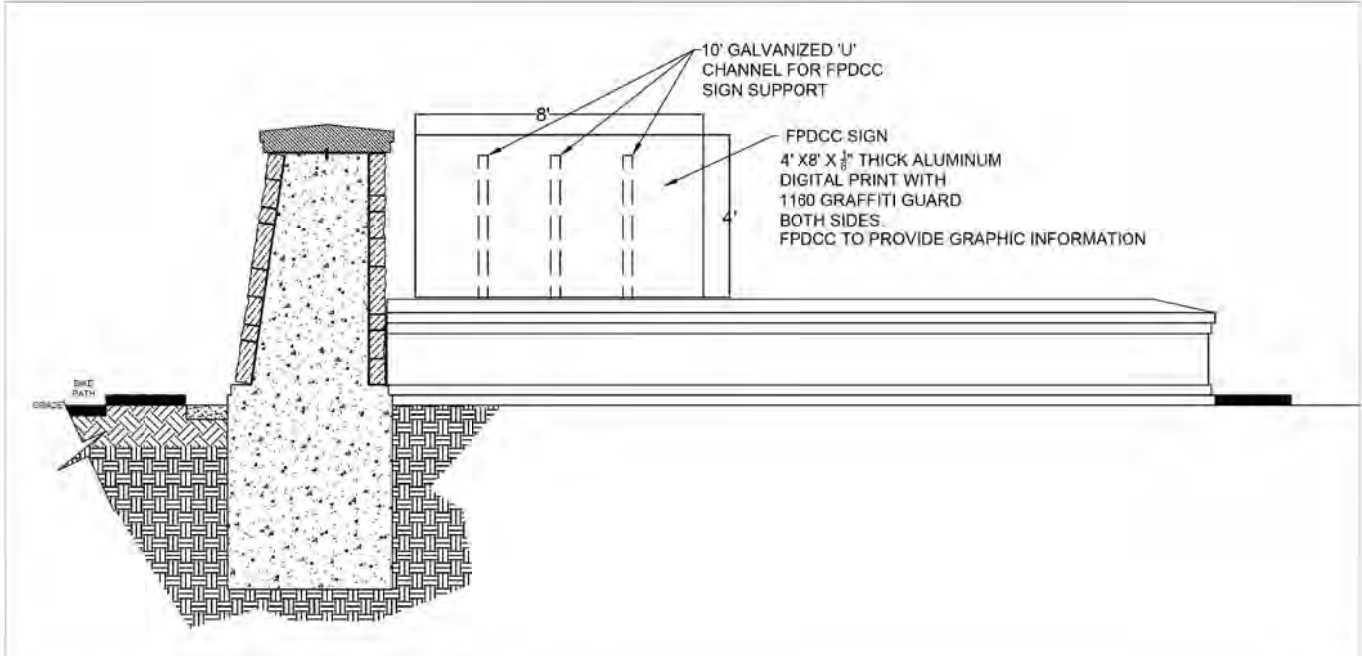


12 GA LASER CUT WEATHERING STEEL PANEL
MOUNTED TO COLUMN WITH STAINLESS STEEL 1" LONG OFFSET PEGS

SOUTH COLUMN 'NILES' SIGN



WAYFINDING NORTH WALL SECTION 'C' SCALE 1" = 1 1/2'



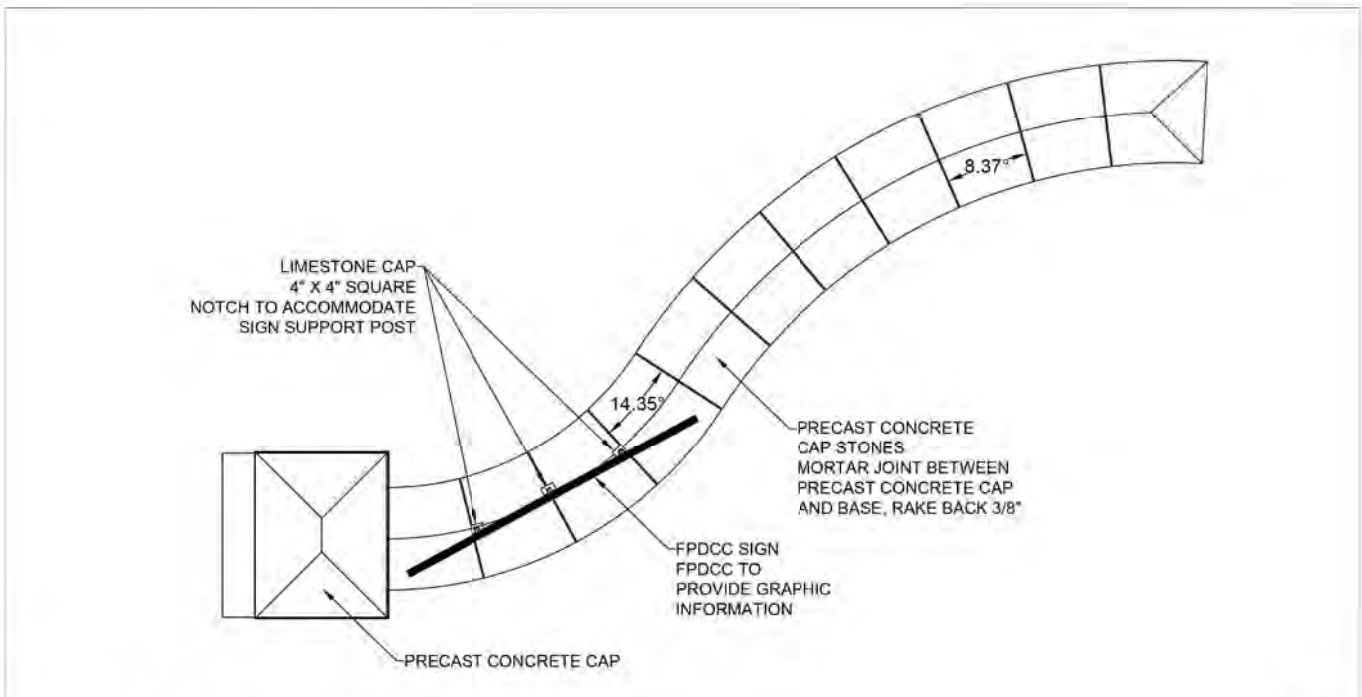
WAYFINDING NORTH WALL PLAN VIEW

NTS



12 GA LASER CUT WEATHERING STEEL PANEL
MOUNTED TO COLUMN WITH STAINLESS STEEL 1" LONG OFFSET PEGS

NORTH COLUMN 'FOREST PRESERVE' SIGN



WAYFINDING NORTH WALL PLAN VIEW

NTS

MODEL: D:\c4\h1
FILE NAME: NILES190072\CHINLSCP-03_190072.dwg

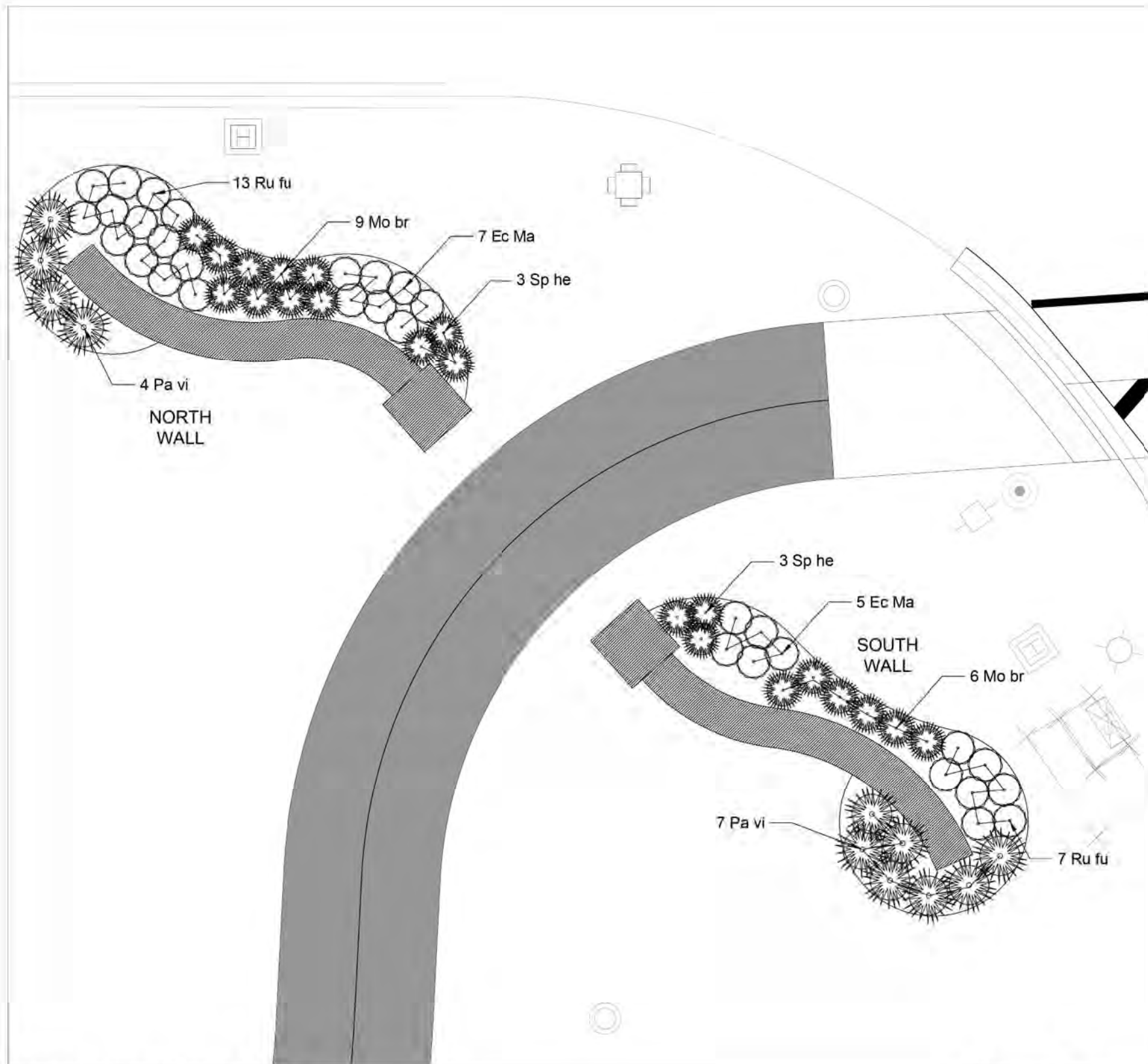
CB CHRISTOPHER B. BURKE ENGINEERING, LTD. 9773 W. Higgins Road, Suite 600 Rosemont, Illinois 60018 (847) 823-0500	USER NAME = dconnell	DESIGNED - DOC	REVISED -
	PLOT SCALE = 1"	DRAWN - DOC	REVISED -
	PLOT DATE = 7/25/2022	CHECKED - LMF	REVISED -
		DATE - 7/25/2022	REVISED -

STATE OF ILLINOIS
DEPARTMENT OF TRANSPORTATION

SCALE:		SHEET	OF	SHEETS	STA.	TO	STA.

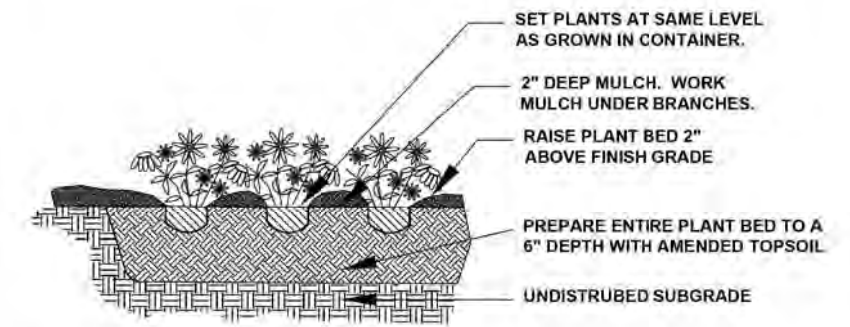
NORTH BRANCH TRAIL CONNECTION
PROPOSED WAYFINDING DETAILS

F.A.P. RTE.	SECTION	COUNTY	TOTAL SHEETS	SHEET NO.
0375	19-00135-00-BT	COOK	45	37
CONTRACT NO. 61H81				
ILLINOIS FED. AID PROJECT				



WAYFINDING WALL LANDSCAPE PLAN

PLANT LIST						
Item	Sym.	Botanical Name	Common Name	Qty.	Size	Cond.
Perennials and Grasses						
K0012990	Ec Ma	Echinacea Magnus	Magnus Purple Coneflower	12	#1	Cont.
K0012990	Mo br	Monarda bradburiana	Eastern Beebalm	15	#1	Cont.
K0012990	Pa vi	Panicum virgatum 'Rotstrahlbusch'	Red Switch Grass	11	#1	Cont.
K0012990	Ru fu	Rudbeckia fulgida 'Goldstrum'	Blackeyed Susan	20	#1	Cont.
K0012990	Sp he	Sporobolus heterolepis	Prairie Dropseed	6	#1	Cont.



PERENNIAL DETAIL
NO SCALE

INCLUDED IN COST OF WAYFINDING SIGN, SPECIAL

GENERAL CONSTRUCTION NOTES:

1. ALL ALTERATIONS MUST BE APPROVED BY THE LANDSCAPE ARCHITECT.
2. CONTRACTORS MUST VERIFY ALL QUANTITIES AND OBTAIN ALL PROPER PERMITS AND LICENSES FROM THE PROPER AUTHORITIES.
3. ALL LANDSCAPE IMPROVEMENTS SHALL MEET MUNICIPALITY REQUIREMENTS AND GUIDELINES, WHICH SHALL BE VERIFIED BY MUNICIPAL AUTHORITIES.
4. ALL MATERIAL MUST MEET INDUSTRY STANDARDS AND THE LANDSCAPE ARCHITECT HAS THE RIGHT TO REFUSE ANY POOR MATERIAL OR WORKMANSHIP.
5. LANDSCAPE ARCHITECT IS NOT RESPONSIBLE FOR UNSEEN SITE CONDITIONS.
6. ALL PLANTINGS SHALL BE SPACED EQUAL DISTANT, BACKFILLED WITH AMENDED SOIL IN A HOLE TWICE THE ROOT BALL DIAMETER, WATERED, FERTILIZED, PRUNED AND HAVE ALL TAGS REMOVED.
7. LAWN AND BED AREAS SHALL BE ROTO-TILLED AND CLUMPS OF SOIL, AGGREGATES AND DEBRIS RAKED OUT AND REMOVED FROM THE SITE.
8. ALL DISTURBED AREAS SHALL HAVE A MIN. OF 6" OF TOPSOIL PLACED AND THEN SEED, FERT. AND BLANKET INSTALLED.
9. ALL BEDS SHALL BE EDGED, HAVE WEED PRE-EMERGENT APPLIED AT THE RECOMMENDED RATE, AND SHREDDED HARDWOOD MULCH SPREAD AT A MINIMUM OF 3" DEPTH.
10. ALL DEBRIS SHALL BE REMOVED FROM THE SITE AND DISPOSED OF PROPERLY.

MODEL: D:\64\11... FILE NAME: N:\MILES\190072\CHILLSCP-04_190072.dwg

CB CHRISTOPHER B. BURKE ENGINEERING, LTD.
3073 W. Higgins Road, Suite 600
Rosemont, Illinois 60018
(847) 823-0000

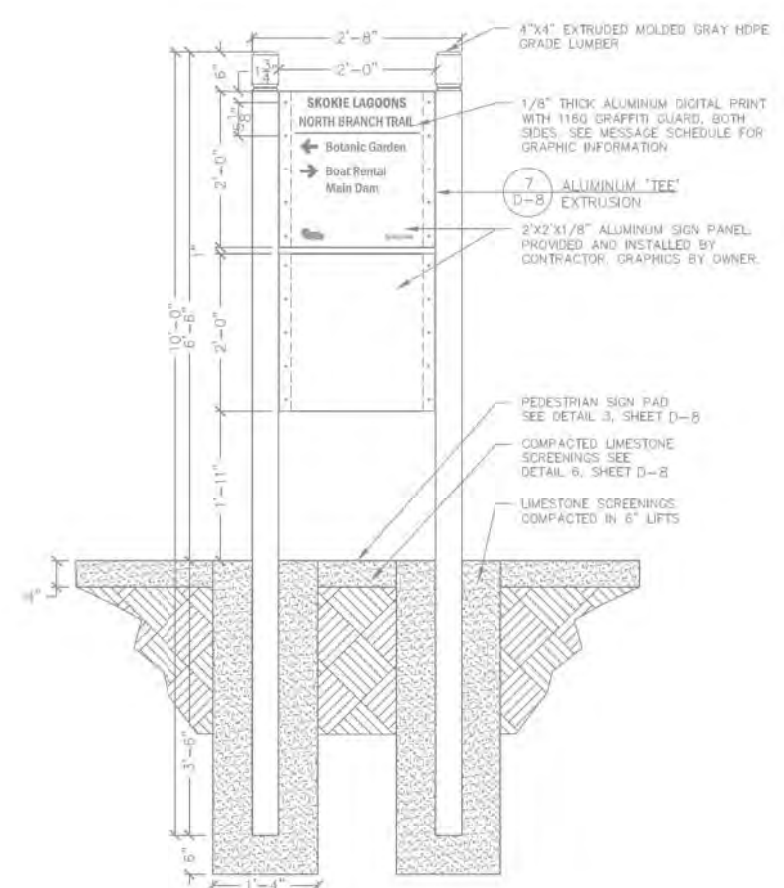
USER NAME = dconnell	DESIGNED - DOC	REVISED -
	DRAWN - DOC	REVISED -
PLOT SCALE = 1"	CHECKED - LMF	REVISED -
PLOT DATE = 7/25/2022	DATE - 7/25/2022	REVISED -

**STATE OF ILLINOIS
DEPARTMENT OF TRANSPORTATION**

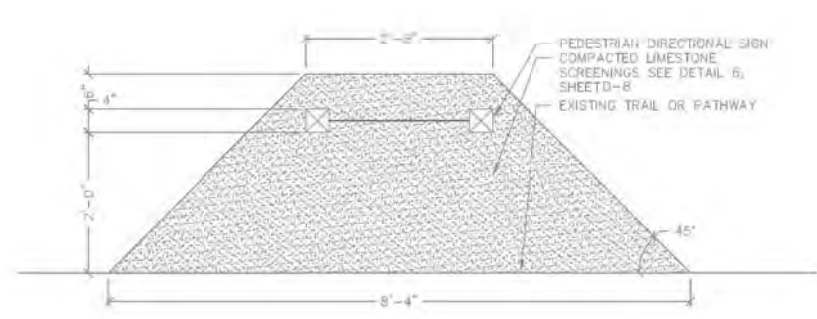
**NORTH BRANCH TRAIL CONNECTION
PROPOSED WAYFINDING DETAILS**

SCALE: SHEET OF SHEETS STA. TO STA.

F.A.P. RTE.	SECTION	COUNTY	TOTAL SHEETS	SHEET NO.
0375	19-00135-00-BT	COOK	45	38
CONTRACT NO. 61H81				
ILLINOIS FED. AID PROJECT				



2 3.2 - PEDESTRIAN DIRECTIONAL COMBO SIGN
SCALE: N.T.S.



3 PEDESTRIAN SIGN PAD
SCALE: N.T.S.

MODEL: D:\6181\190072\CHILLS\CP-05_190072.dwg
 FILE NAME: N:\FILES\190072\CHILLS\CP-05_190072.dwg

	USER NAME = docconnell	DESIGNED - DOC	REVISED -
		DRAWN - DOC	REVISED -
	PLOT SCALE = 1'	CHECKED - LMF	REVISED -
	PLOT DATE = 7/25/2022	DATE - 7/25/2022	REVISED -

STATE OF ILLINOIS
DEPARTMENT OF TRANSPORTATION

NORTH BRANCH TRAIL CONNECTION PROPOSED WAYFINDING DETAILS			
SCALE:	SHEET	OF SHEETS	STA. TO STA.

F.A.P. RTE.	SECTION	COUNTY	TOTAL SHEETS	SHEET NO.
0375	19-00135-00-BT	COOK	45	39
CONTRACT NO. 61H81				
		ILLINOIS	FED. AID PROJECT	